

FOR LEASE



WILLOW CREEK SPACE

PROFESSIONAL OFFICE SPACE

Bender
COMMERCIAL



1704 S CLEVELAND AVE, SUITE 1
SIOUX FALLS, SD



1,864 USF
2,189 RSF



\$11.50/SF NNN
EST NNN: \$4.97/SF

- Professional office space in the Willow Creek Building near 26th Street in east Sioux Falls.
- Convenient eastside location close to downtown with quick access to 26th Street and I-229.
- Space consists of a reception area, seven (7) private offices, and in-suite restroom.
- Parking ratio of 1 space per 213 SF.
- Space can be leased with additional units.
- The building is also for sale. Great opportunity for owner-occupant.
- *Three months free rent for acceptable lease.*

BOBBIE TIBBETTS

bobbie@benderco.com

605-670-9455

NICK GUSTAFSON, CCIM

nick@benderco.com

605-201-2809



Bender Commercial Real Estate Services | 305 West 57th Street | Sioux Falls, SD 57108 | 605-336-7600 | benderco.com

© 2026 Bender Companies. Information herein deemed reliable, but not guaranteed.

WILLOW CREEK SPACE



OFFICE SPACE FOR LEASE



Bender Commercial Real Estate Services | 305 West 57th Street | Sioux Falls, SD 57108 | 605-336-7600 | benderco.com

2026 Bender Companies. Information herein deemed reliable, but not guaranteed.

WILLOW CREEK SPACE



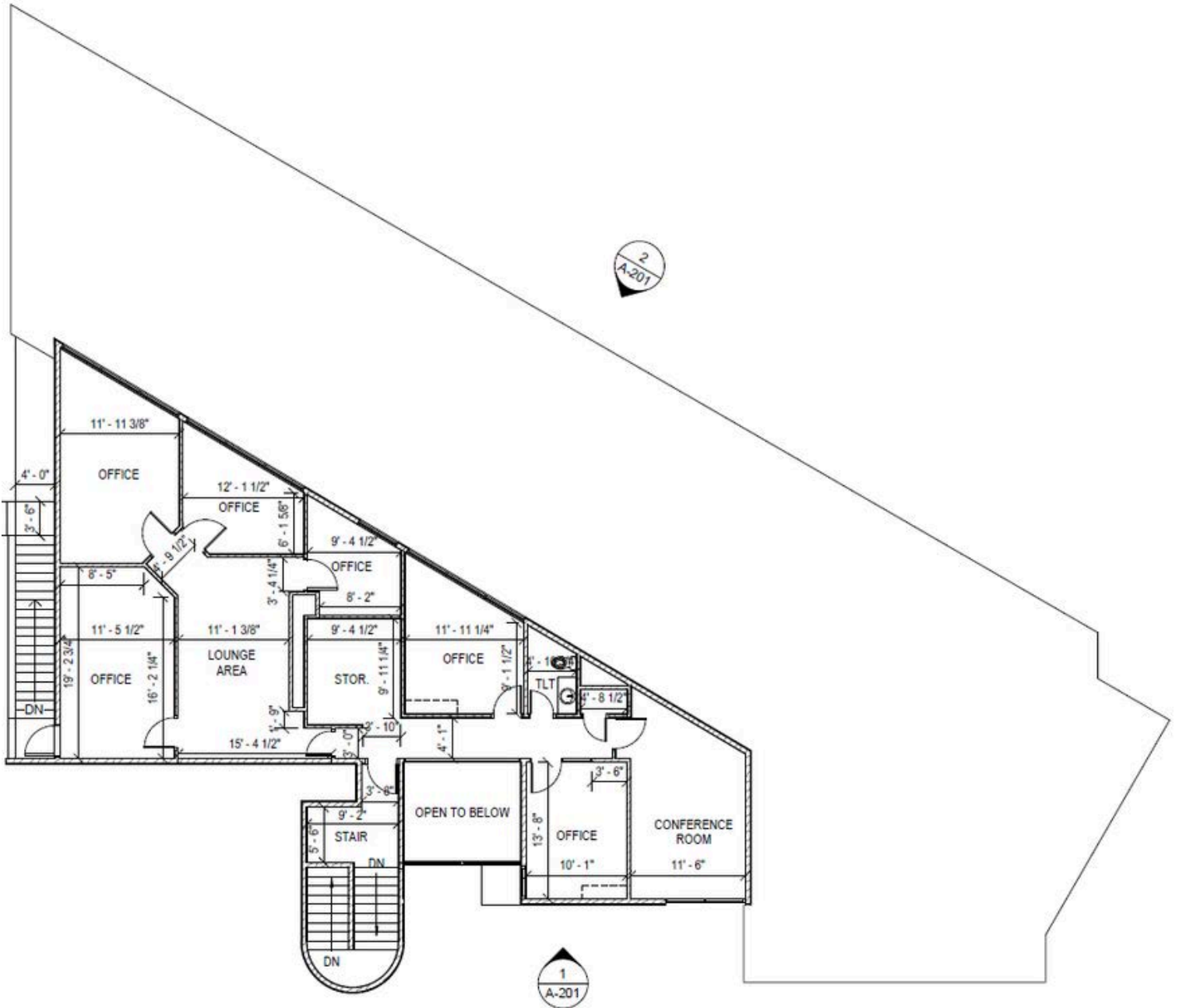
OFFICE SPACE FOR LEASE



WILLOW CREEK SPACE



SUITE 1 FLOORPLAN



WILLOW CREEK SPACE



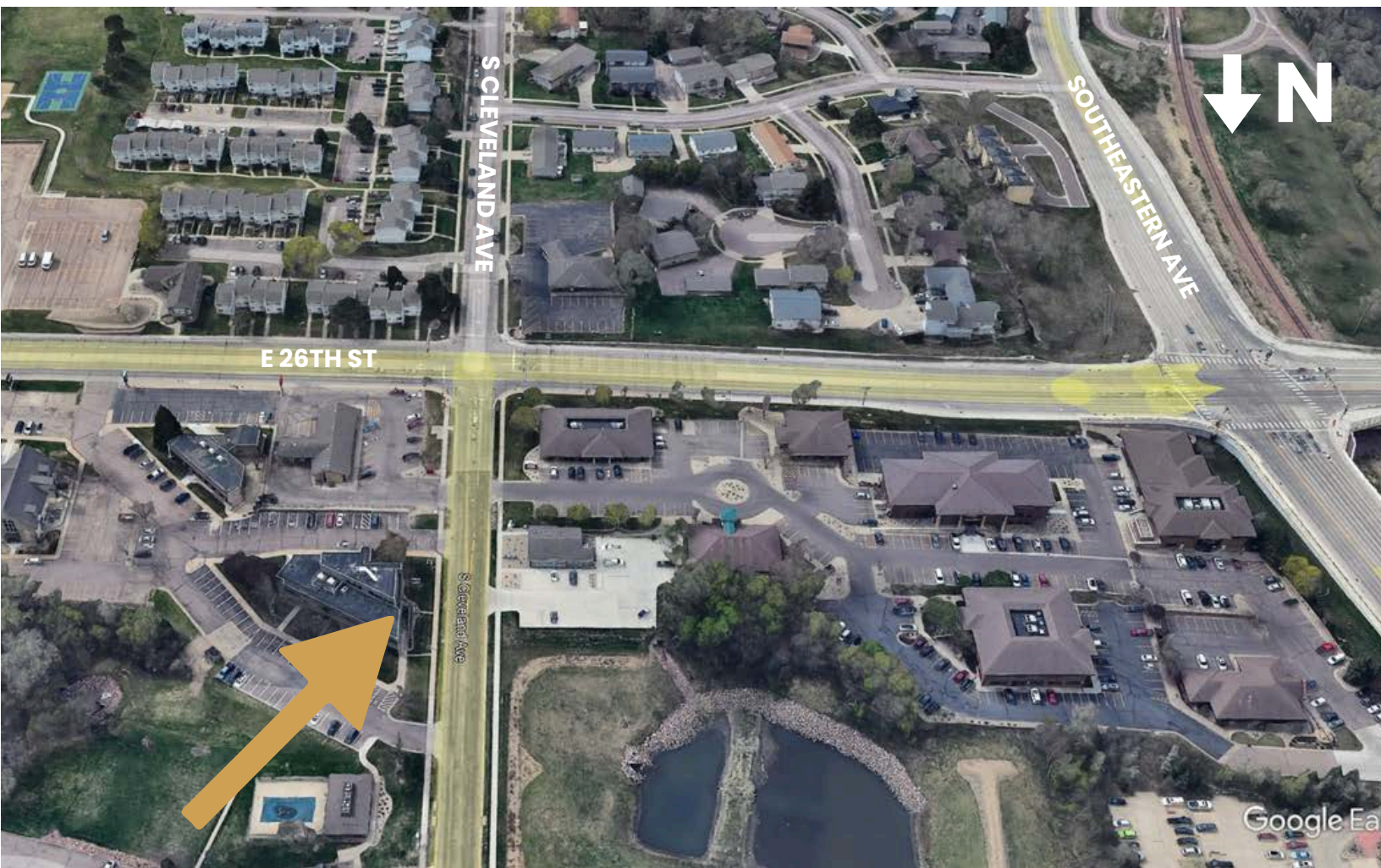
OFFICE SPACE FOR LEASE



WILLOW CREEK SPACE



OFFICE SPACE FOR LEASE



Bender Commercial Real Estate Services | 305 West 57th Street | Sioux Falls, SD 57108 | 605-336-7600 | benderco.com

2026 Bender Companies. Information herein deemed reliable, but not guaranteed.

WILLOW CREEK SPACE



OFFICE SPACE FOR LEASE

