

FOR LEASE



COPPER CREEK OFFICE SPACE

OFFICE SPACE

Bender
COMMERCIAL

 **6221 E SILVER MAPLE CIR, SUITE 2**
SIOUX FALLS, SD

 **1,675 RSF**

 **\$14.50/SF NNN**
EST NNN: \$5.43/SF

- Garden level office space in the Copper Creek Office Park near 26th Street and South Veteran's Parkway (SD 100).
- Space is currently configured with a large reception area, three (3) private offices, conference room and file room.
- Common area restrooms.
- Parking ratio of 1 space per 254 square feet.
- Located near Dawley Farm Village with neighboring businesses such as First Dakota National Bank, Avera Health, Caribou Coffee, Casey's, Target, Century Theatres and Subway.

ALEX SOUNDY, CCIM, SIOR | alex@benderco.com | 605-376-3700



Bender Commercial Real Estate Services | 305 West 57th Street | Sioux Falls, SD 57108 | 605-336-7600 | benderco.com

© 2026 Bender Companies. Information herein deemed reliable, but not guaranteed.

COPPER CREEK OFFICE SPACE



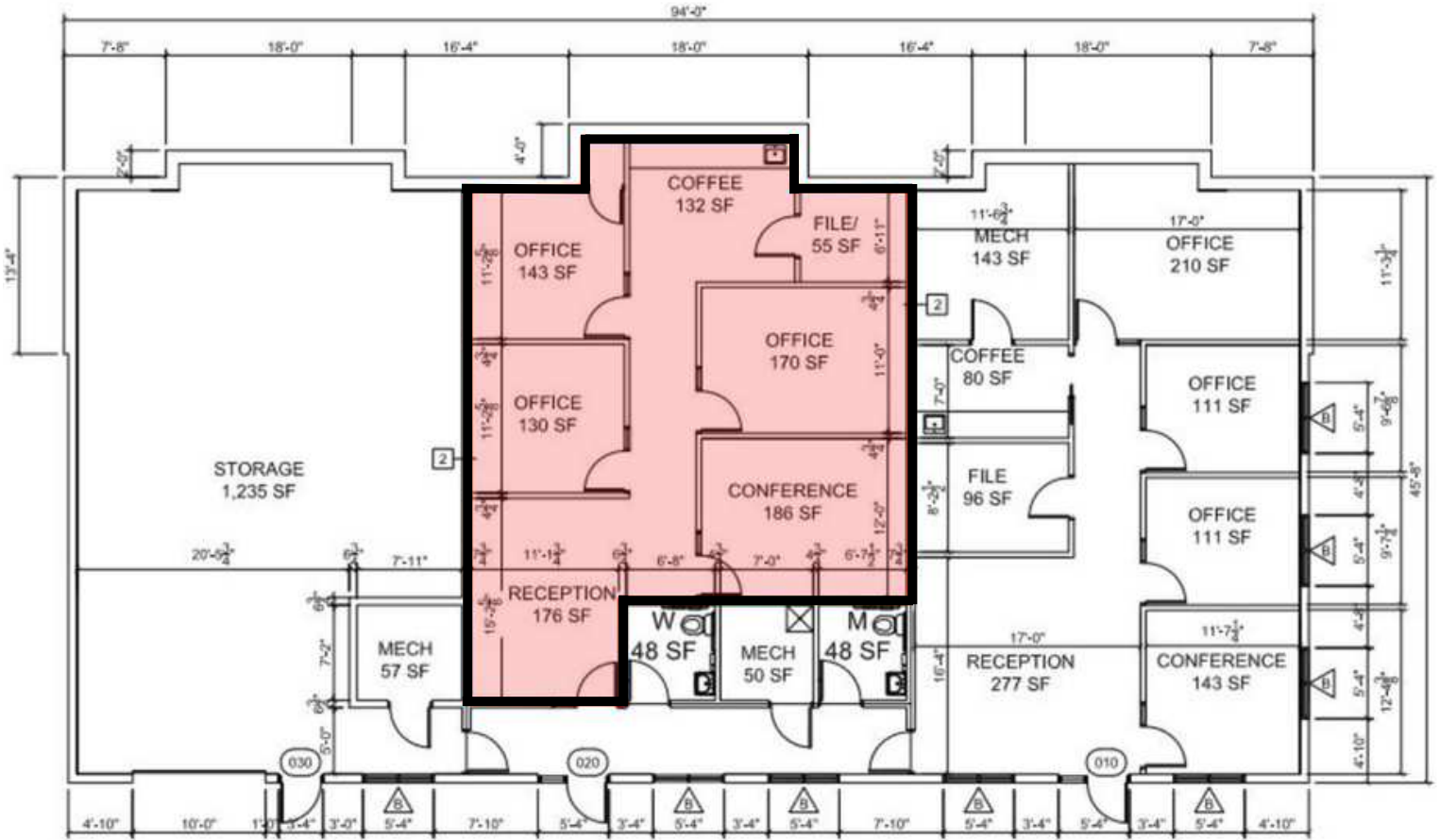
OFFICE SPACE FOR LEASE



COPPER CREEK OFFICE SPACE



OFFICE SPACE FOR LEASE



Bender Commercial Real Estate Services | 305 West 57th Street | Sioux Falls, SD 57108 | 605-336-7600 | benderco.com

2026 Bender Companies. Information herein deemed reliable, but not guaranteed.

COPPER CREEK OFFICE SPACE



OFFICE SPACE FOR LEASE

