

**FOR SALE**



# BRULE LAND

RARE LAND OPPORTUNITY WITH MULTIPLE USES

**Bender**  
COMMERCIAL



**47162 310TH STREET  
BERESFORD, SD**



**375.78 AC**



**\$7,500,000**

- Union County land with a combination of tillable farmland, gravel pit potential, hunting ground, and beautiful home sites.
- Features rolling hills, beautiful topography, and a private 35-acre stocked pond.
- 150 +/- total tillable acres.
- One (1) residential property located on Parcel ID #200.00.05.4020 (47162 310th Street). 1,802 SF, built in 1920.
- Building eligibilities: one (1) locked (existing house) and six (6) additional available. Union County was open to additional home sites on property outside of eligibilities. Buyer to confirm with the county.
- A significant amount of gravel on site. Contact broker for details.

**AUSTIN LUECKE**

austin@benderco.com  
605-900-2407

**ROB KURTENBACH**

rk@benderco.com  
605-940-0559

# BRULE LAND



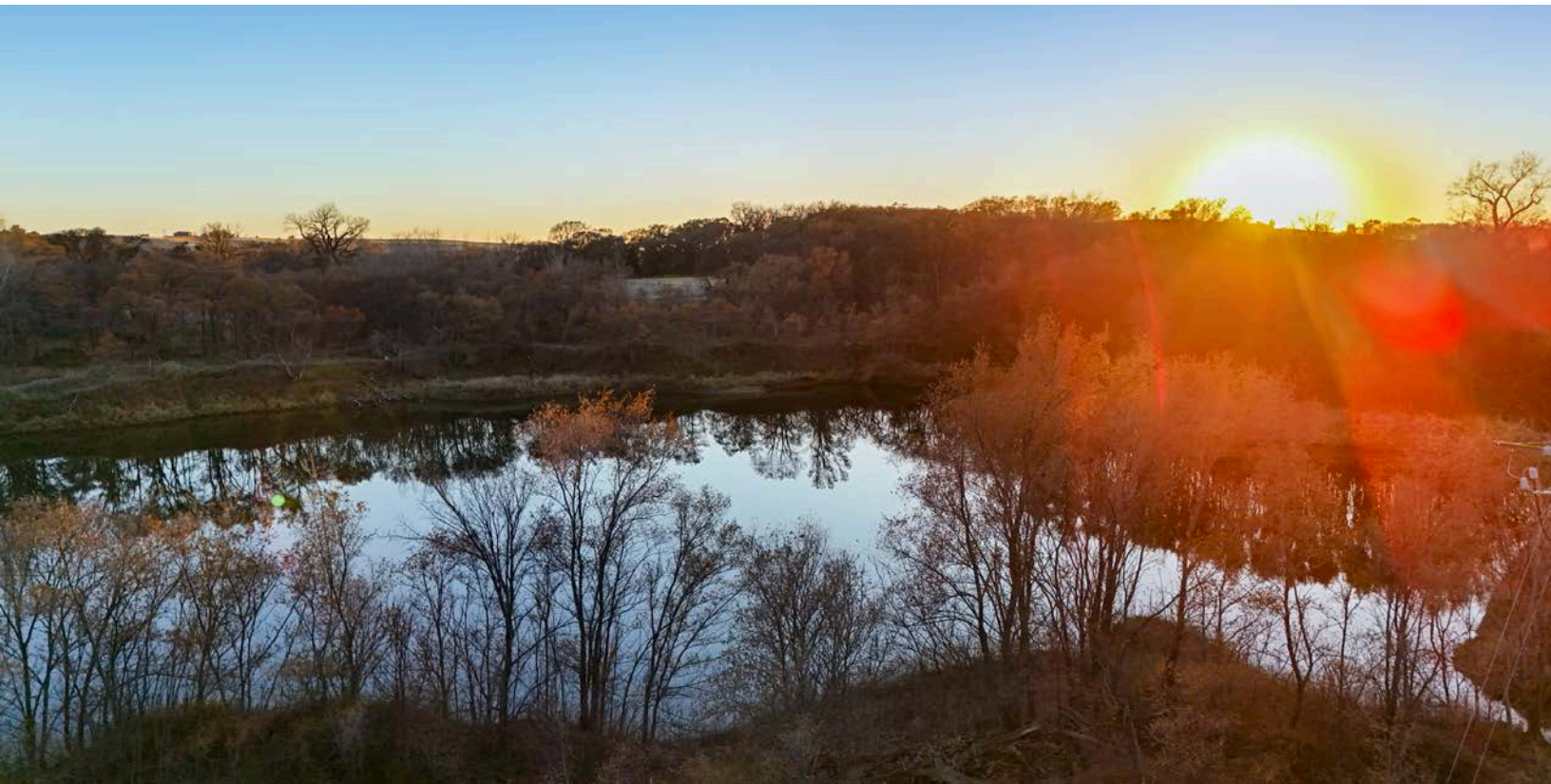
## UNION COUNTY LAND FOR SALE



# BRULE LAND



## UNION COUNTY LAND FOR SALE



# BRULE LAND



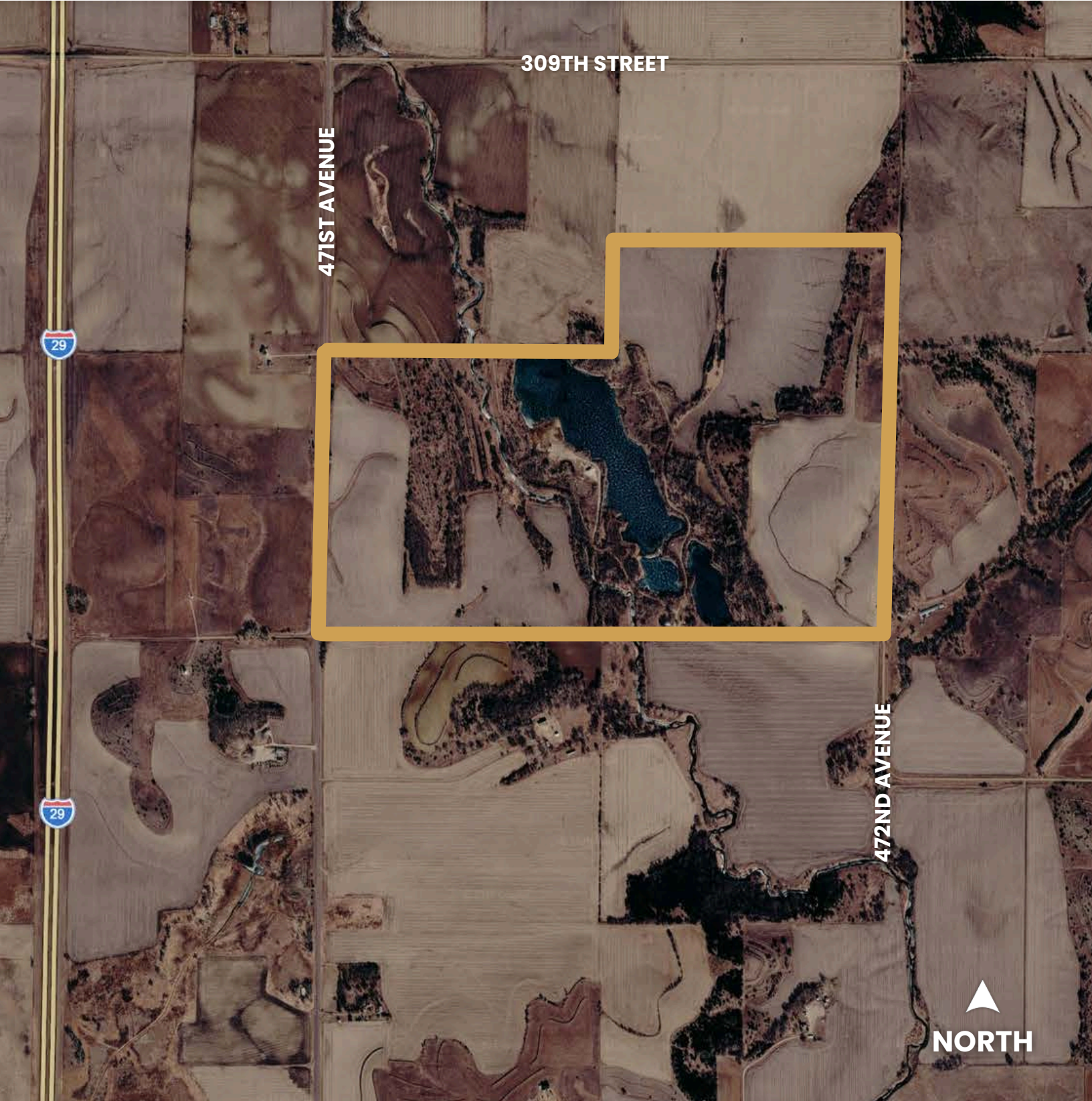
## UNION COUNTY LAND FOR SALE



# BRULE LAND



UNION COUNTY LAND FOR SALE



# BRULE LAND



## UNION COUNTY LAND FOR SALE

