

FOR LEASE



MINNESOTA RETAIL SPACE

HIGH-VISIBILITY IN CENTRAL SIOUX FALLS



1914 S MINNESOTA AVE
SIOUX FALLS, SD



2,740 SF



\$15.50/SF NNN
TIA: \$40.00/SF

- High-visibility retail space along Minnesota Avenue in central Sioux Falls.
- Includes a wide open area, restrooms, and a work space.
- On-site parking spaces and on-street parking along Minnesota Avenue.
- High-traffic location with traffic counts of 22,100 vpd on Minnesota Avenue. Nearby 26th Street averages 12,100 vpd.
- Neighboring businesses include Caribou Coffee, Jimmy John's, Wingstop, Walgreens, Wells Fargo Bank, Pizza Cheeks, and O'Reilly Auto Parts.

ISAAC JORGENSEN | isaac@benderco.com | 605-799-5058



Bender Commercial Real Estate Services | 305 West 57th Street, Sioux Falls, SD 57108 | 605-336-7600 | benderco.com

© 2026 Bender Companies. Information herein deemed reliable, but not guaranteed.

MINNESOTA RETAIL SPACE



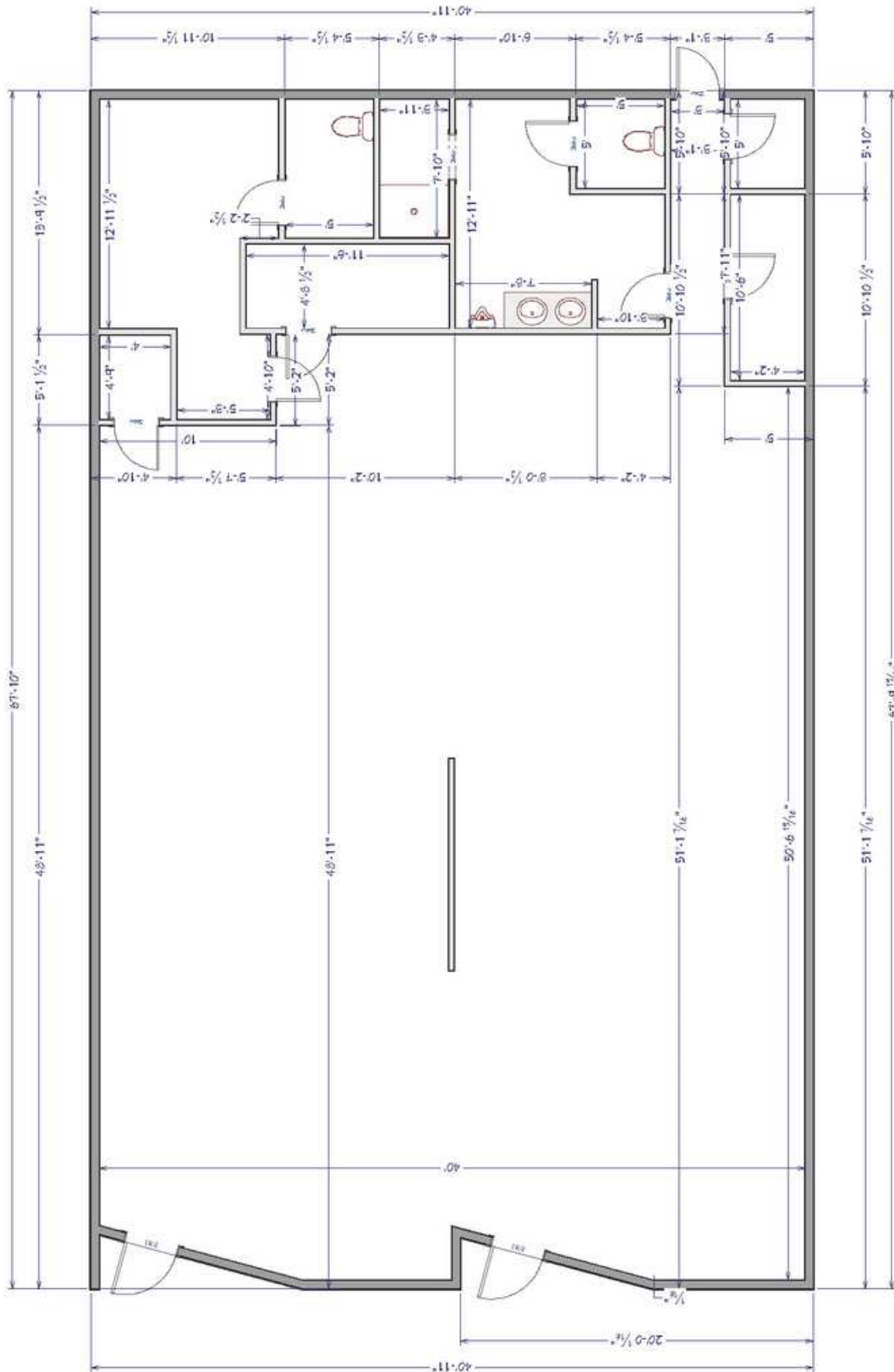
RETAIL SPACE FOR LEASE



MINNESOTA RETAIL SPACE



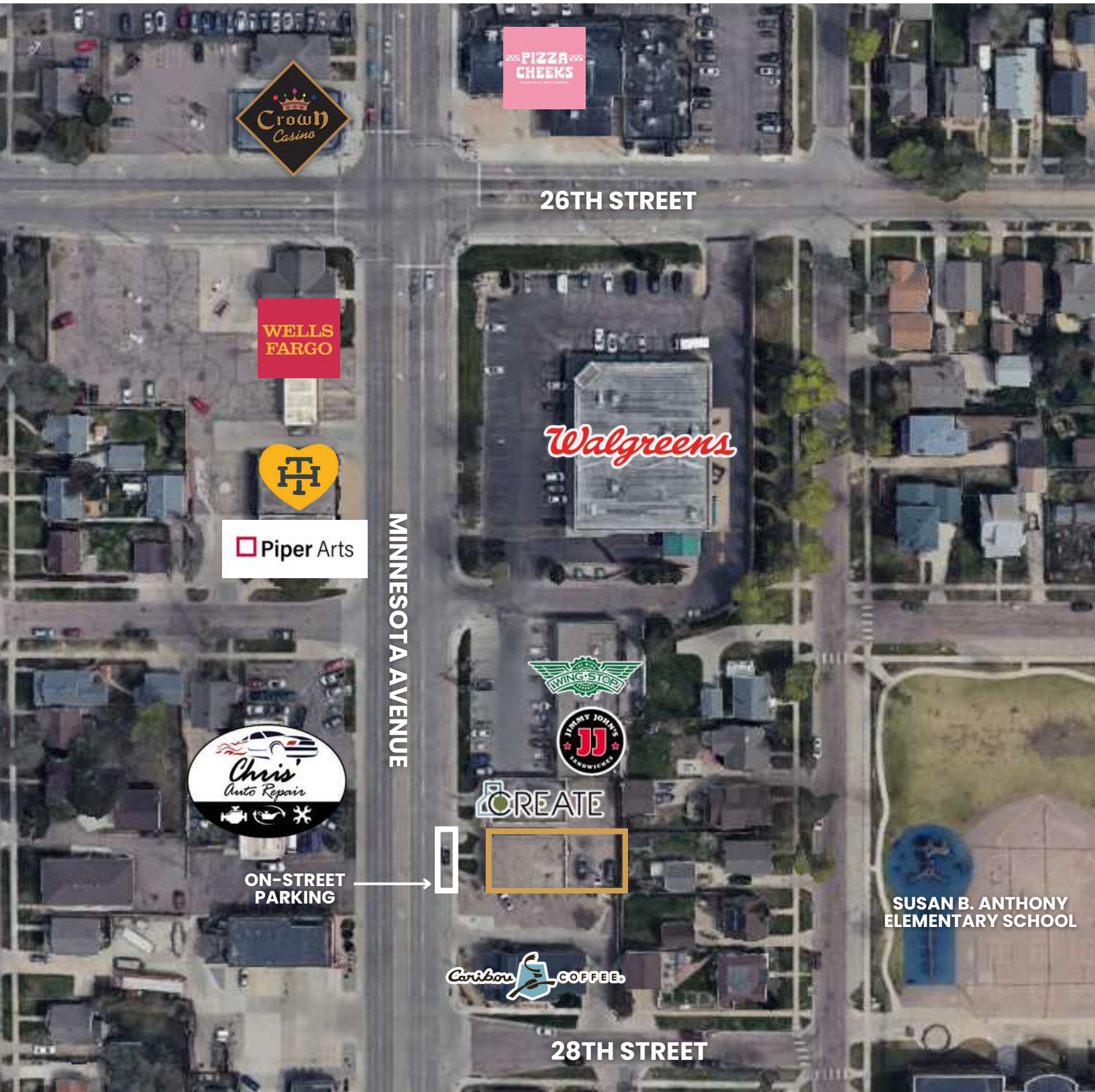
RETAIL SPACE FOR LEASE



MINNESOTA RETAIL SPACE



RETAIL SPACE FOR LEASE



MINNESOTA RETAIL SPACE



RETAIL SPACE FOR LEASE

