

FOR LEASE



RUSSELL OFFICE SPACE

OFFICE WITH EASY ACCESS AND HIGH VISIBILITY

Bender
COMMERCIAL



2301 W RUSSELL ST, SUITE 4
SIOUX FALLS, SD



1,032 SF



\$16.00/SF NNN

- Office space includes an open work area, four (4) private offices, and a conference room.
- Common area restrooms.
- Monument signage.
- Parking ratio of 1:350 (27 spaces).
- Convenient location along Russell Street (35,100 VPD) between Kiwanis Avenue (6,200 VPD) and Western Avenue (3,100 VPD).
- Neighboring businesses include State Farm Insurance, Prairie & Pine Gift Boxes, Holiday Inn & Suites, Crooked Pint Ale House, Elmwood Golf Course, Sioux Falls Convention Center, and Denny Sanford PREMIER Center.

BOBBIE TIBBETTS | bobbie@benderco.com | 605-670-9455



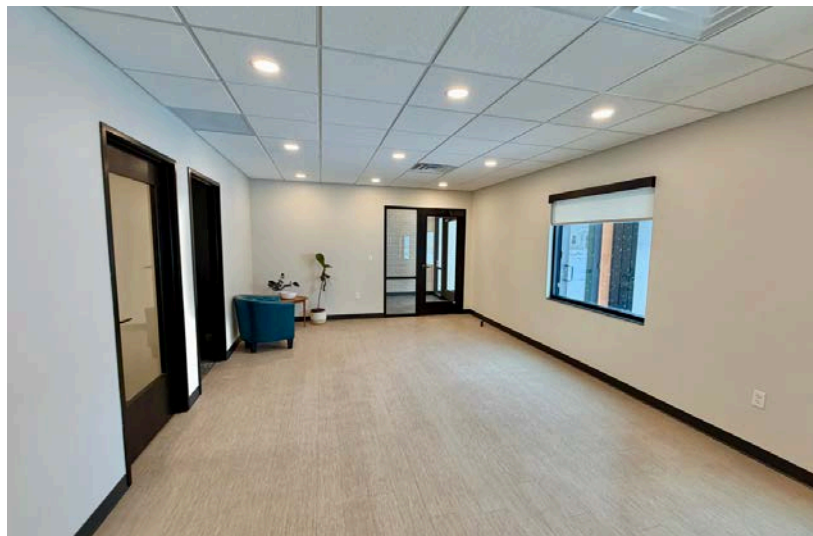
Bender Commercial Real Estate Services | 305 West 57th Street | Sioux Falls, SD 57108 | 605-336-7600 | benderco.com

© 2026 Bender Companies. Information herein deemed reliable, but not guaranteed.

RUSSELL OFFICE SPACE



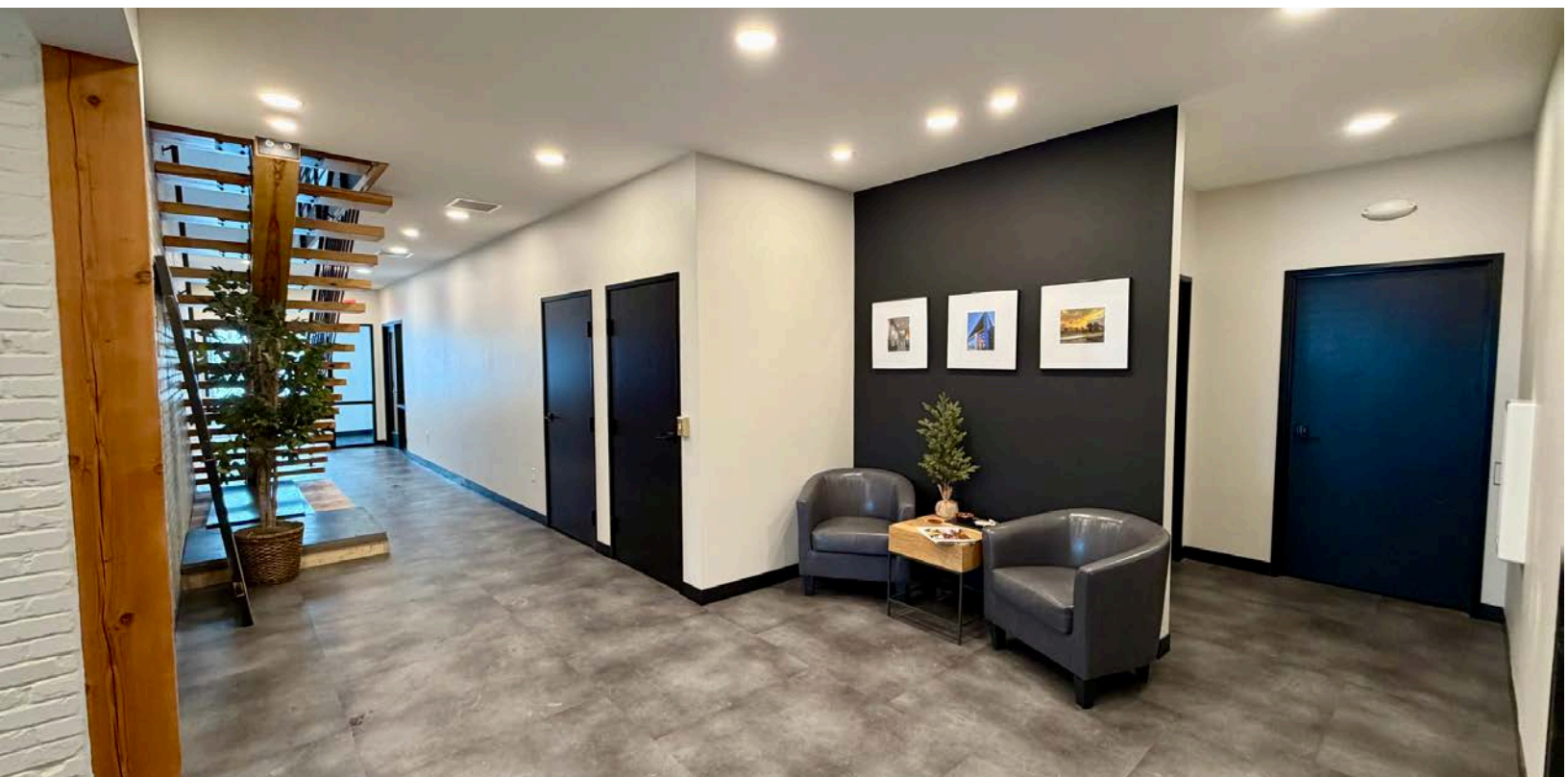
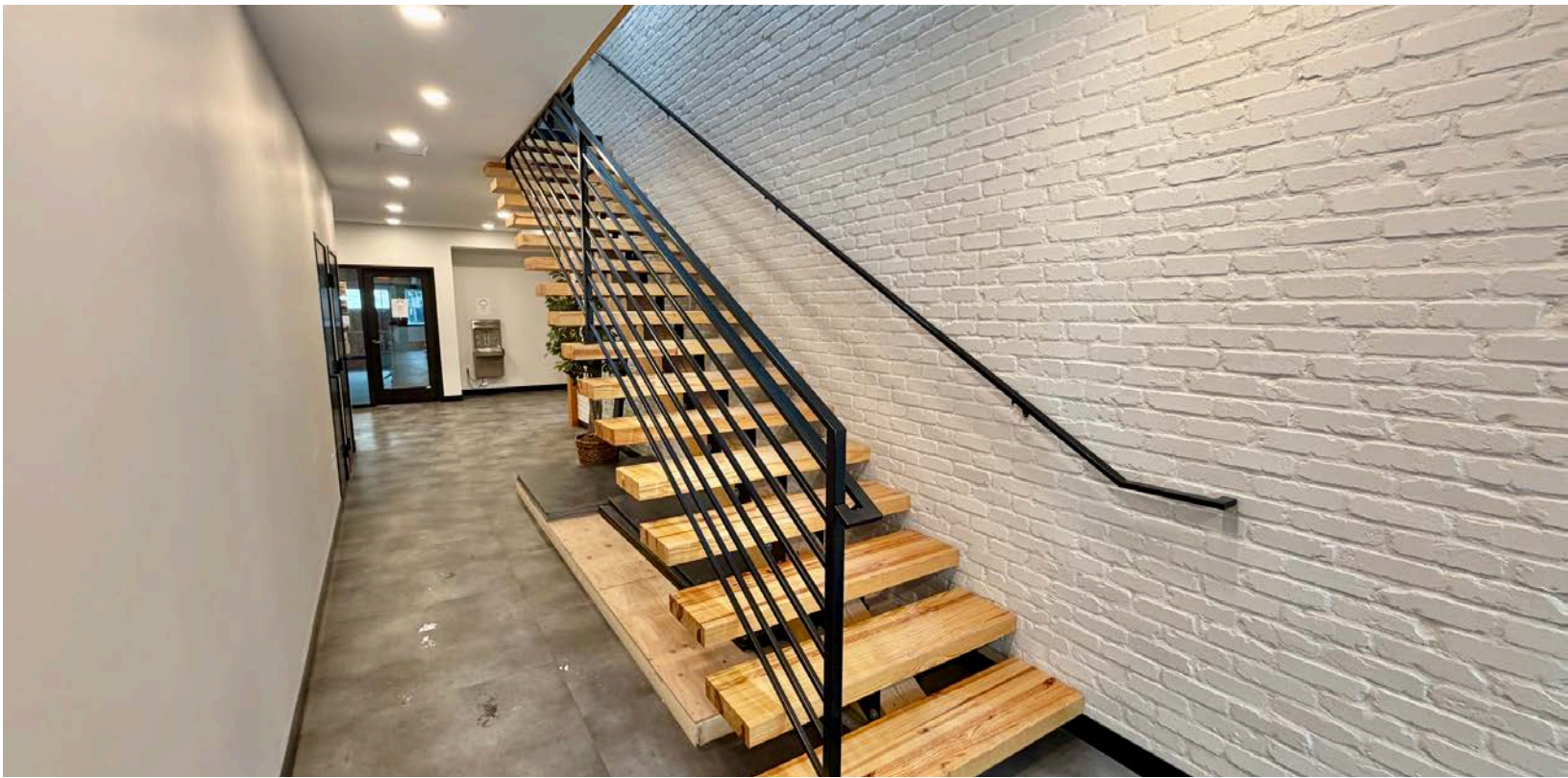
OFFICE SPACE FOR LEASE | SUITE 4



RUSSELL OFFICE SPACE



OFFICE SPACE FOR LEASE | COMMON AREAS



RUSSELL OFFICE SPACE



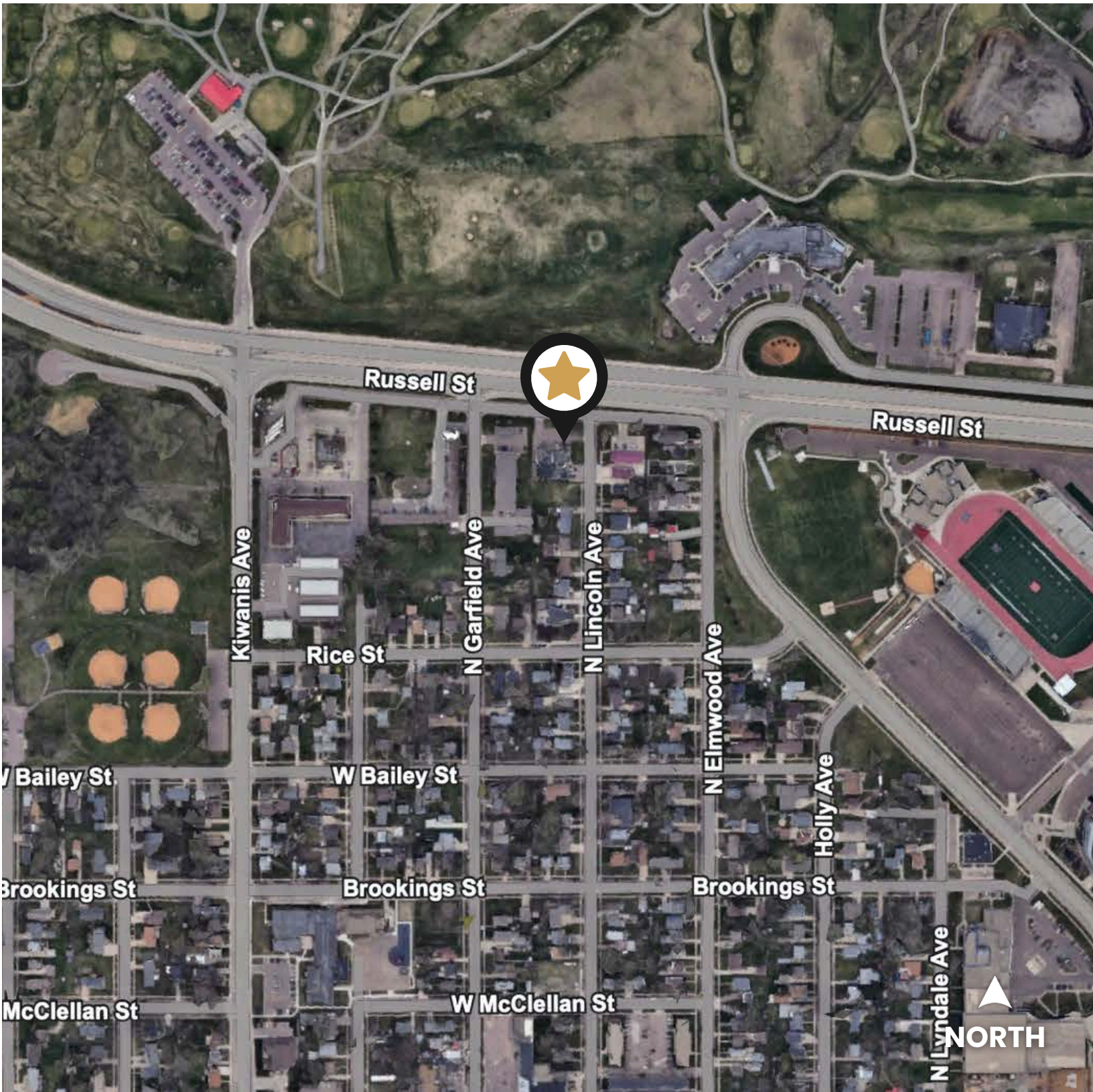
OFFICE SPACE FOR LEASE | FLOORPLAN



RUSSELL OFFICE SPACE



OFFICE SPACE FOR LEASE



RUSSELL OFFICE SPACE



OFFICE SPACE FOR LEASE

