

FOR SALE



THE SUMMIT BUILDING

OFFICE BUILDING ALONG CLIFF AVENUE

Bender
COMMERCIAL



5128 SOUTH CLIFF AVENUE
SIOUX FALLS, SD



7,557 SF



\$2,100,000

- Two-level office building with four suites located near 57th Street and Cliff Avenue in southeast Sioux Falls.
- Lower level walk-out space has separate entrance.
- Each suite has a reception area, open work area, private offices, and in-suite restroom.
- Built in 2019.
- Lot size: 0.5 acres.
- 1:189 parking ratio with 36 parking spaces.
- Monument signage.
- No backyard neighbors with Glenview Park located behind building.
- Great tenant mix. Contact broker for financials and rent roll.
- Suite 100 includes 2,358 SF and is currently vacant. Great opportunity for owner-occupant.

ROB KURTENBACH | rk@benderco.com | 605-940-0559



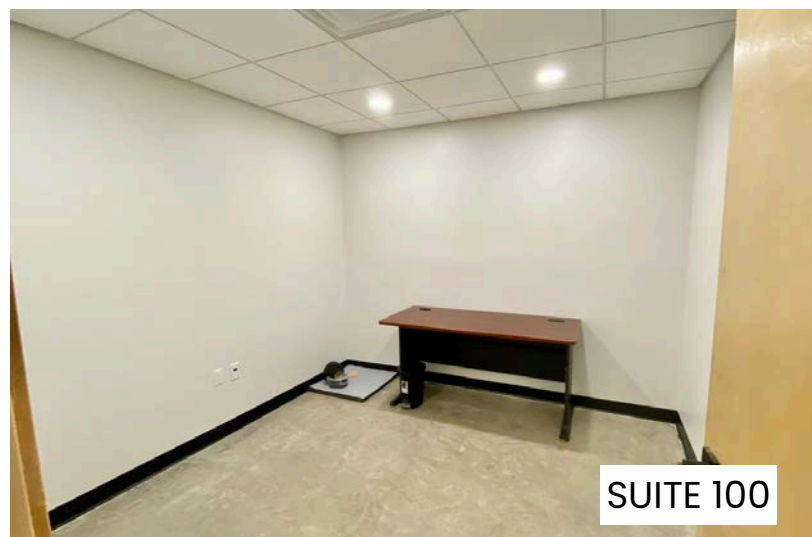
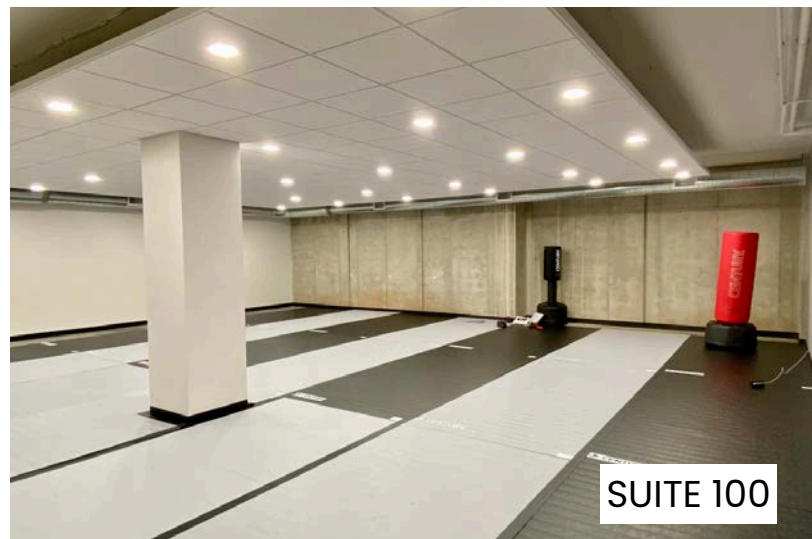
Bender Commercial Real Estate Services | 305 West 57th Street | Sioux Falls, SD 57108 | 605-336-7600 | benderco.com

© 2026 Bender Companies. Information herein deemed reliable, but not guaranteed.

THE SUMMIT BUILDING



OFFICE BUILDING FOR SALE



THE SUMMIT BUILDING



OFFICE BUILDING FOR SALE



THE SUMMIT BUILDING



OFFICE BUILDING FOR SALE

