

FOR SALE



DELAWARE FLEX BUILDING

AIRPORT INDUSTRIAL PARK

Bender
COMMERCIAL



**1207 WEST DELAWARE STREET
SIOUX FALLS, SD**



18,000 SF



**\$2,150,000
(\$119/SF)**

- Office area includes reception, conference room, eleven (11) private offices, work areas, and restrooms.
- Shop area includes seven (7) overhead doors.
- Original shop space has air conditioning.
- Fenced yard.
- Built in 1991 (12,000 SF) with later addition of 6,000 SF.
- Lot size: 69,701 SF (1.6 acres).
- Convenient access to Russell Street and Minnesota Avenue with proximity to the Sioux Falls Regional Airport, Interstate 29, and Interstate 90.

AUSTIN LUECKE

austin@benderco.com
605-900-2407

REGGIE KUIPERS, SIOR

reggie@benderco.com
605-496-2966



Bender Commercial Real Estate Services | 305 West 57th Street, Sioux Falls, SD 57108 | 605-336-7600 | benderco.com

© 2026 Bender Companies. Information herein deemed reliable, but not guaranteed.

DELAWARE FLEX BUILDING



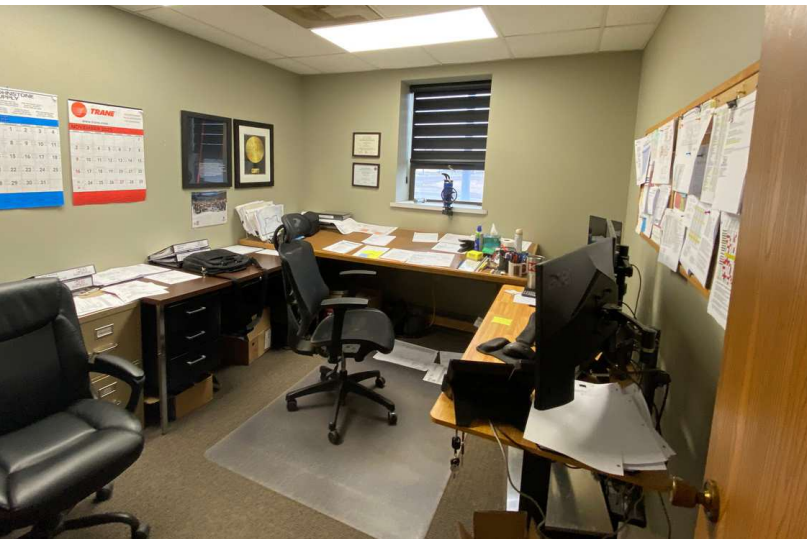
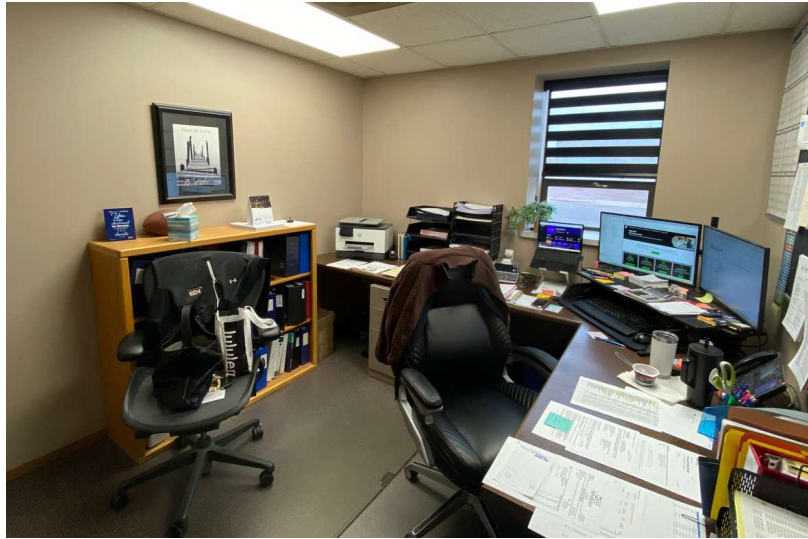
WAREHOUSE AND OFFICE SPACE FOR SALE



DELAWARE FLEX BUILDING



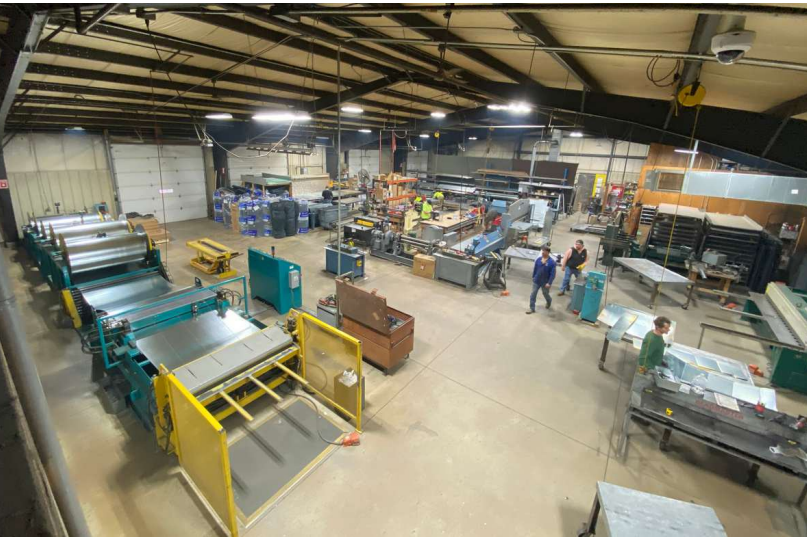
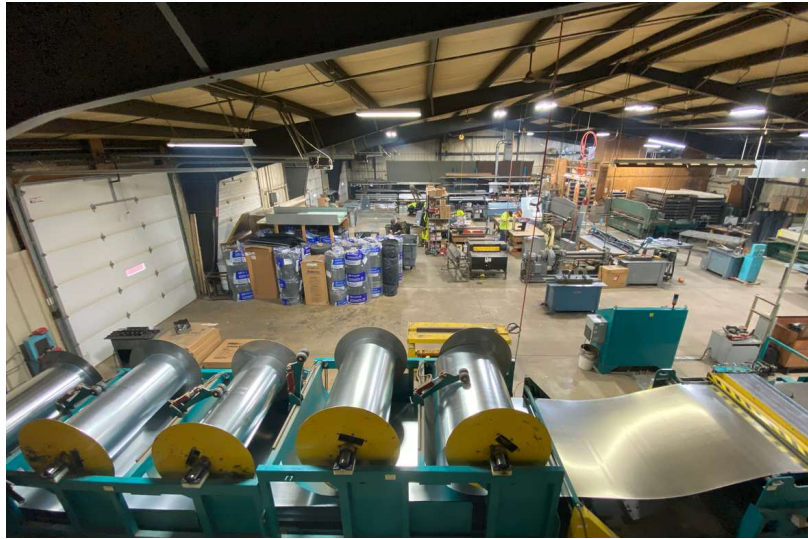
WAREHOUSE AND OFFICE SPACE FOR SALE



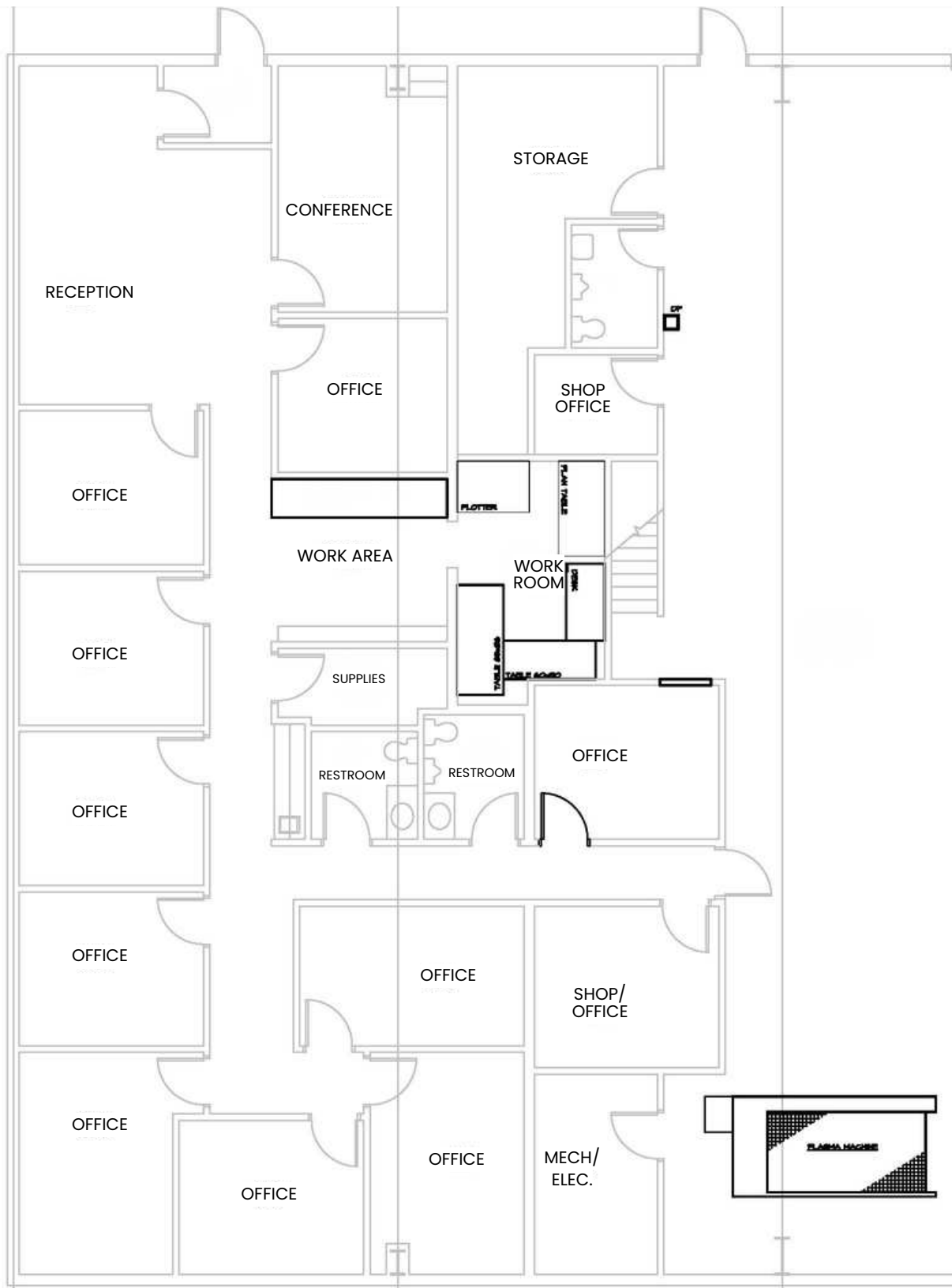
DELAWARE FLEX BUILDING



WAREHOUSE AND OFFICE SPACE FOR SALE



WAREHOUSE AND OFFICE SPACE FOR SALE



DELAWARE FLEX BUILDING



WAREHOUSE AND OFFICE SPACE FOR SALE



DELAWARE FLEX BUILDING



WAREHOUSE AND OFFICE SPACE FOR SALE

