

FOR SALE



WESTLAKE LAND

DEVELOPMENT LAND ON I-90 & VETERANS PKWY

Bender
COMMERCIAL



**5300 EAST 60TH ST NORTH
SIOUX FALLS, SD**



**166.10 AC
SUBDIVIDABLE**



**CONTACT
BROKER**

- Development land located along I-90 and Veterans Parkway.
- Access to be via East 60th Street North.
- More than 1/2 mile of frontage along I-90.
- Great visibility at the new Veterans Parkway I-90 interchange.
- Signalized intersection at East 60th Street North and Veterans Parkway.
- Potential for large industrial and commercial development.
- Subdividable.

DUSTIN HABER

dustin@benderco.com
605-376-5890

ROB FAGNAN, SIOR

rob@benderco.com
605-521-5444

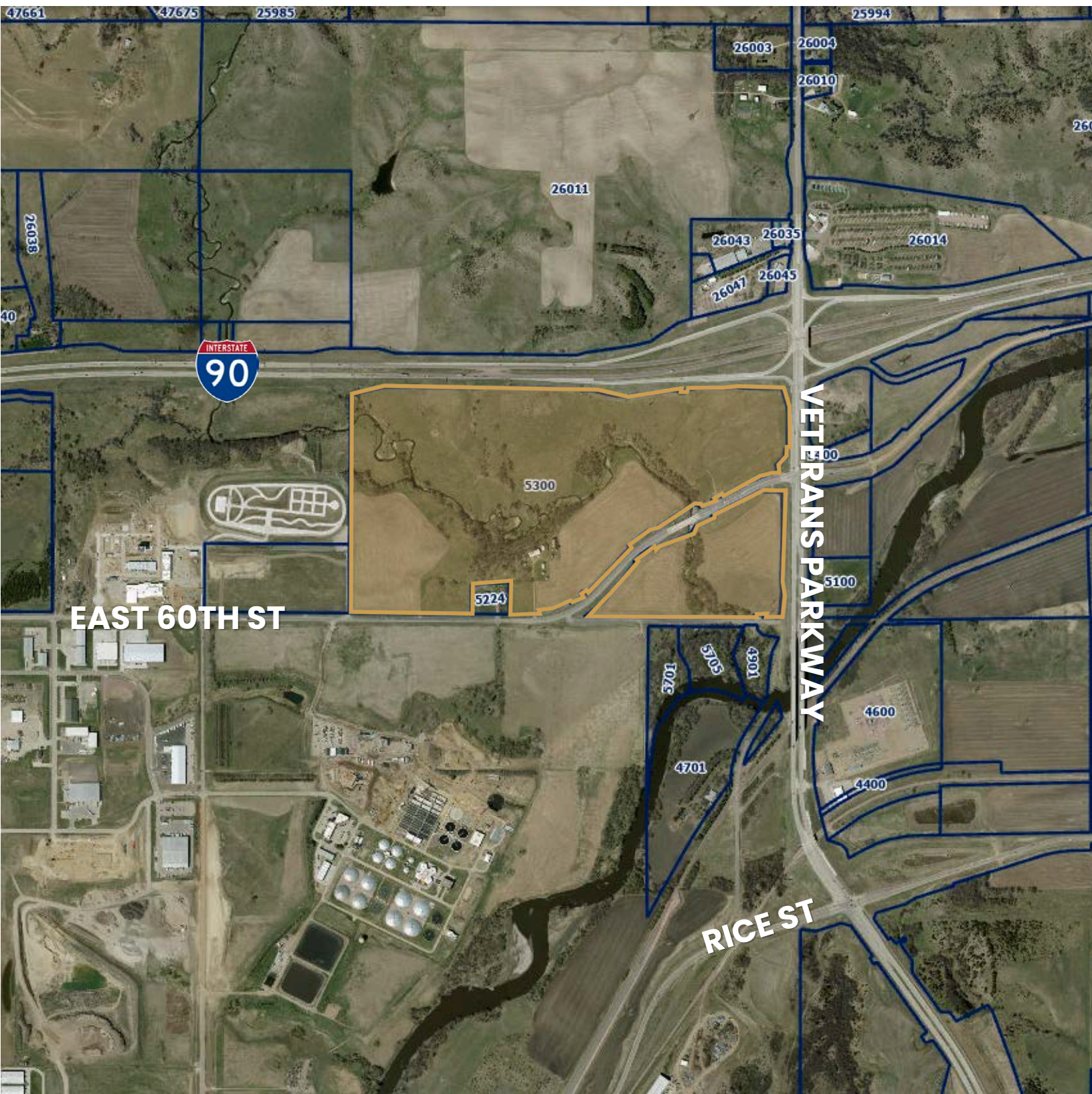
DEVELOPMENT CONCEPT



WESTLAKE LAND



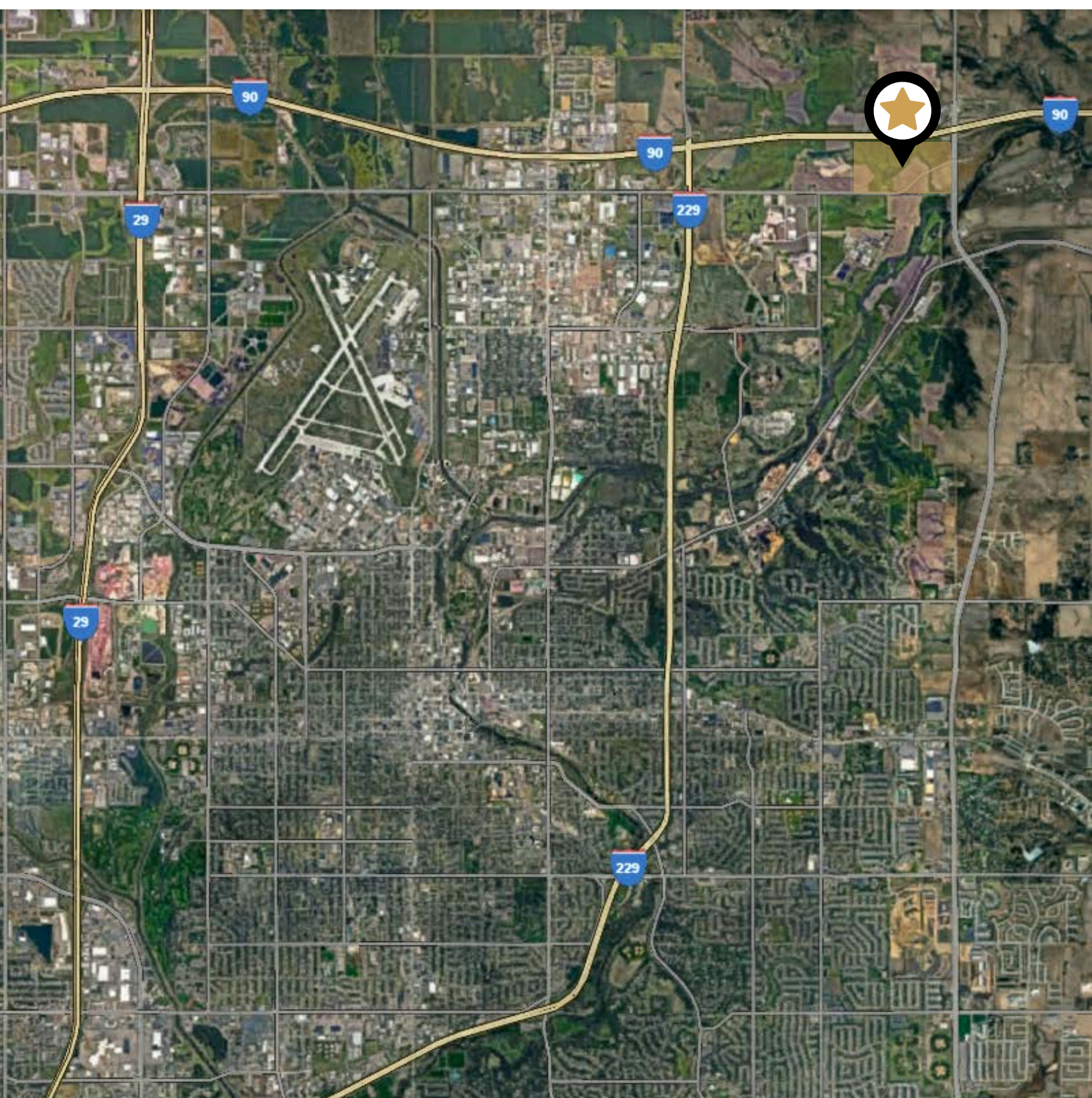
DEVELOPMENT LAND ON I-90 & VETERANS PKWY



WESTLAKE LAND



DEVELOPMENT LAND ON I-90 & VETERANS PKWY



Bender Commercial Real Estate Services | 305 West 57th Street, Sioux Falls, SD 57108 | 605-336-7600 | benderco.com

2025 Bender Companies. Information herein deemed reliable, but not guaranteed.