

FOR LEASE



SOUTHWAY CENTER

RETAIL SPACE

Bender
COMMERCIAL

 **2109A SOUTH MINNESOTA AVENUE
SIOUX FALLS, SD**



1,500 SF



**\$10.00/SF NNN
EST NNN: \$3.93/SF**

- Retail space available in the Southway Center along high traffic Minnesota Avenue.
- Open showroom area and private office.
- Great visibility with a daily traffic count of over 45,000 vehicles.
- Building signage available.
- Additional parking available on the west side of the building.

ANDI ANDERSON, SIOR | andi@benderco.com | 605-782-1660



Bender Commercial Real Estate Services | 305 West 57th Street | Sioux Falls, SD 57108 | 605-336-7600 | benderco.com

© 2026 Bender Companies. Information herein deemed reliable, but not guaranteed.

SOUTHWAY CENTER



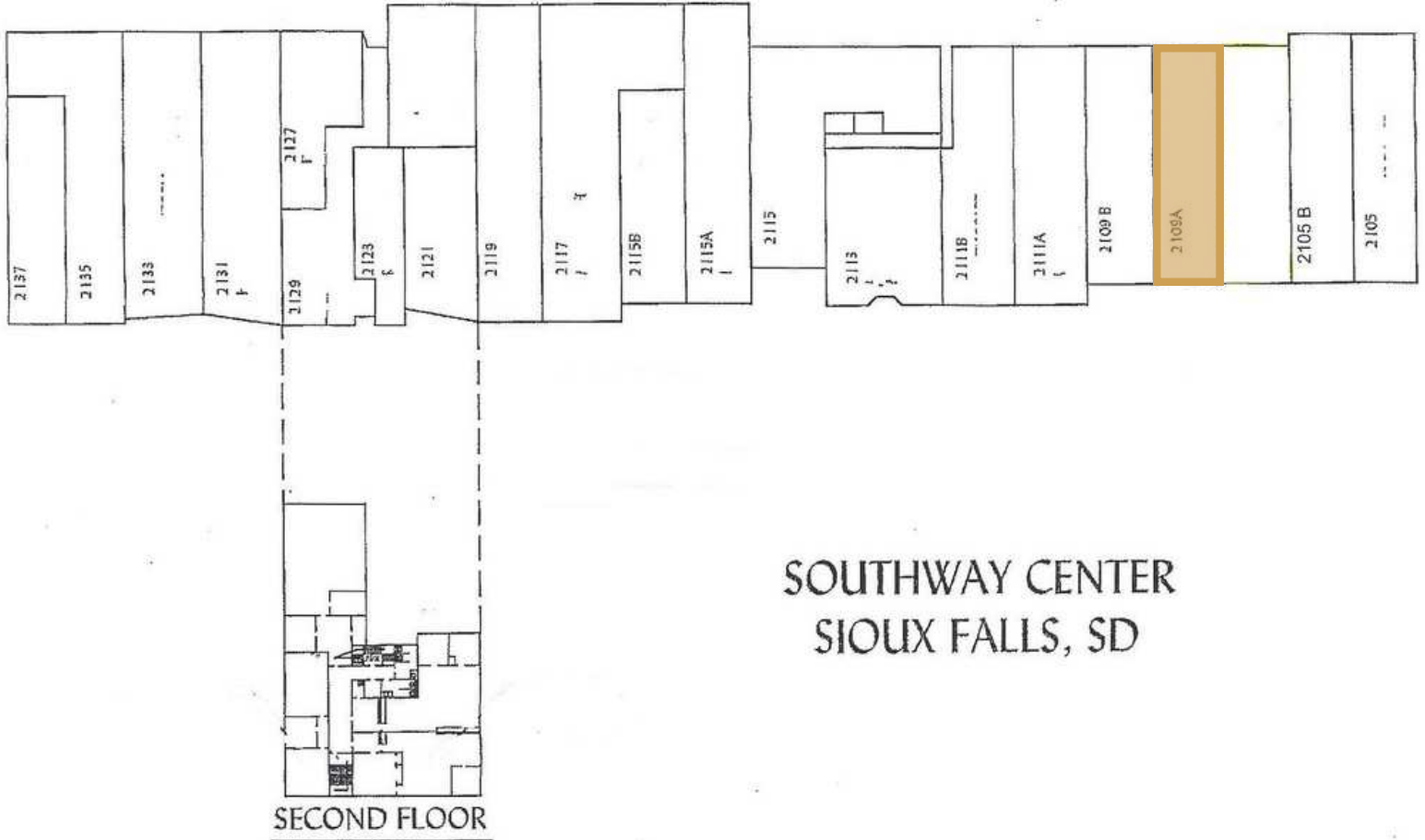
RETAIL SPACE FOR LEASE



SOUTHWAY CENTER



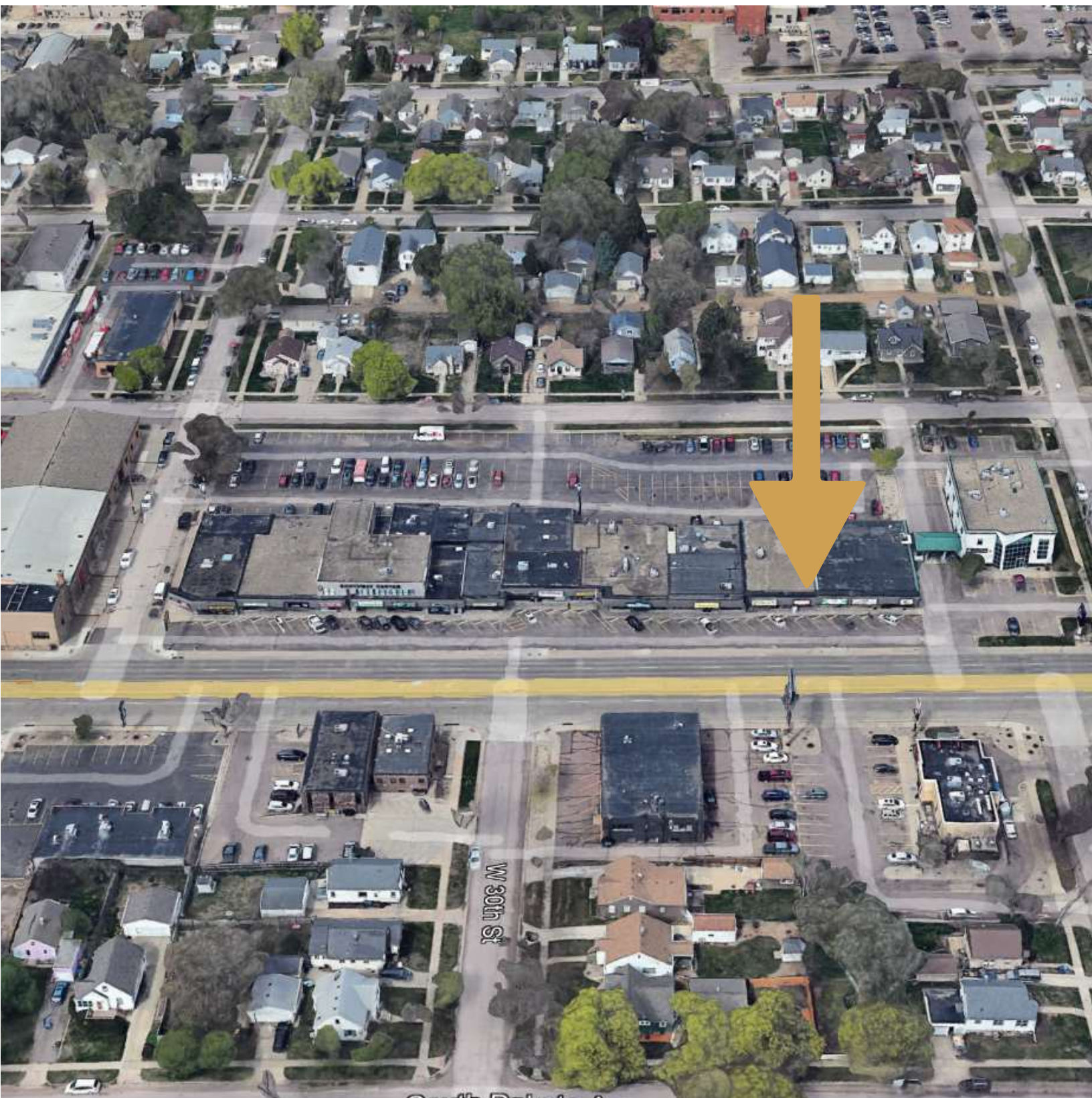
RETAIL SPACE FOR LEASE



SOUTHWAY CENTER



RETAIL SPACE FOR LEASE



Bender Commercial Real Estate Services | 305 West 57th Street | Sioux Falls, SD 57108 | 605-336-7600 | benderco.com

2026 Bender Companies. Information herein deemed reliable, but not guaranteed.

SOUTHWAY CENTER



RETAIL SPACE FOR LEASE

