

**FOR SALE**



# VOYAGE BUILDING

## OFFICE/BANK BUILDING

**Bender**  
COMMERCIAL



**1512 EAST BENSON ROAD**  
**SIOUX FALLS, SD**



**7,984 SF**  
**2 LEVELS**

**\$ \$1,050,000**

- Two-level office building located on Benson Road, near Cliff Avenue and I-229.
- Each floor is 3,992 SF.
- Lot size: 70,406 SF (1.6 acres).
- Monument signage available.
- Convenient access to Cliff Avenue and I-229.
- Ample on-site parking with 1:106 parking ratio.
- Beautiful main level consists of lobby/waiting area with skylight, four (4) private offices, breakroom and two (2) restrooms.
- Lower level includes an unfinished storage with conference/training room.
- Elevator shaft in place for future installation.
- Available October 1, 2025.

**ANDI ANDERSON, SIOR** | [andi@benderco.com](mailto:andi@benderco.com) | 605-782-1660



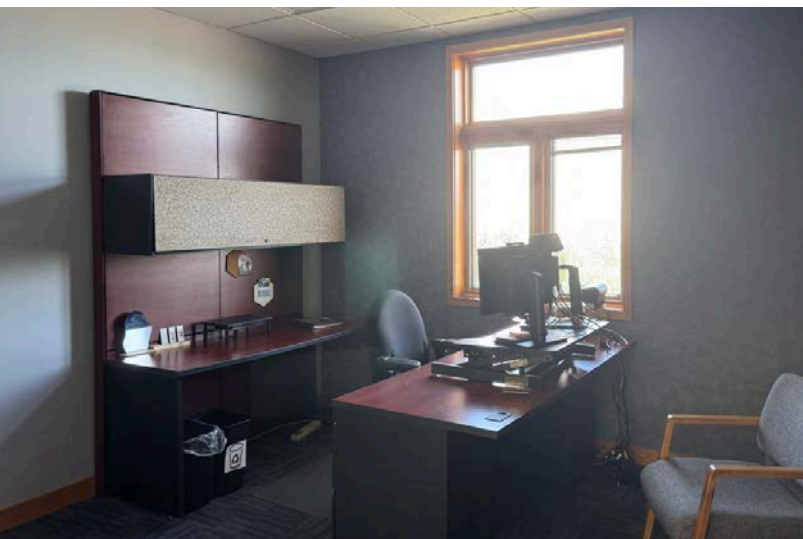
Bender Commercial Real Estate Services | 305 West 57th Street | Sioux Falls, SD 57108 | 605-336-7600 | [benderco.com](http://benderco.com)

© 2025 Bender Companies. Information herein deemed reliable, but not guaranteed.

# VOYAGE BUILDING



## OFFICE/BANK BUILDING FOR SALE



# VOYAGE BUILDING



OFFICE/BANK BUILDING FOR SALE



# VOYAGE BUILDING



OFFICE/BANK BUILDING FOR SALE

