

FOR LEASE



EASTSIDE EXECUTIVE SUITES

HIGHLY-VISIBLE OFFICES

Bender
COMMERCIAL



**3321 EAST 26TH STREET
SIOUX FALLS, SD**



VARIES



\$600/MONTH GROSS

- Upper level, walk-out executive office suites along 26th Street in east Sioux Falls.
- Shared waiting room.
- Two (2) in-suite restrooms.
- Gross lease inclusive of expenses, including internet.
- Easy access to east Sioux Falls and I-229.
- Neighboring businesses include Bagel Boy, Gibs Sports Bar, McDonald's, Circle K, Edward Jones, Hy-Vee, Lewis, Taco John's, and more.

ISAAC JORGENSEN | isaac@benderco.com | 605-799-5058



Bender Commercial Real Estate Services | 305 West 57th Street | Sioux Falls, SD 57108 | 605-336-7600 | benderco.com

© 2026 Bender Companies. Information herein deemed reliable, but not guaranteed.

EASTSIDE EXECUTIVE SUITES



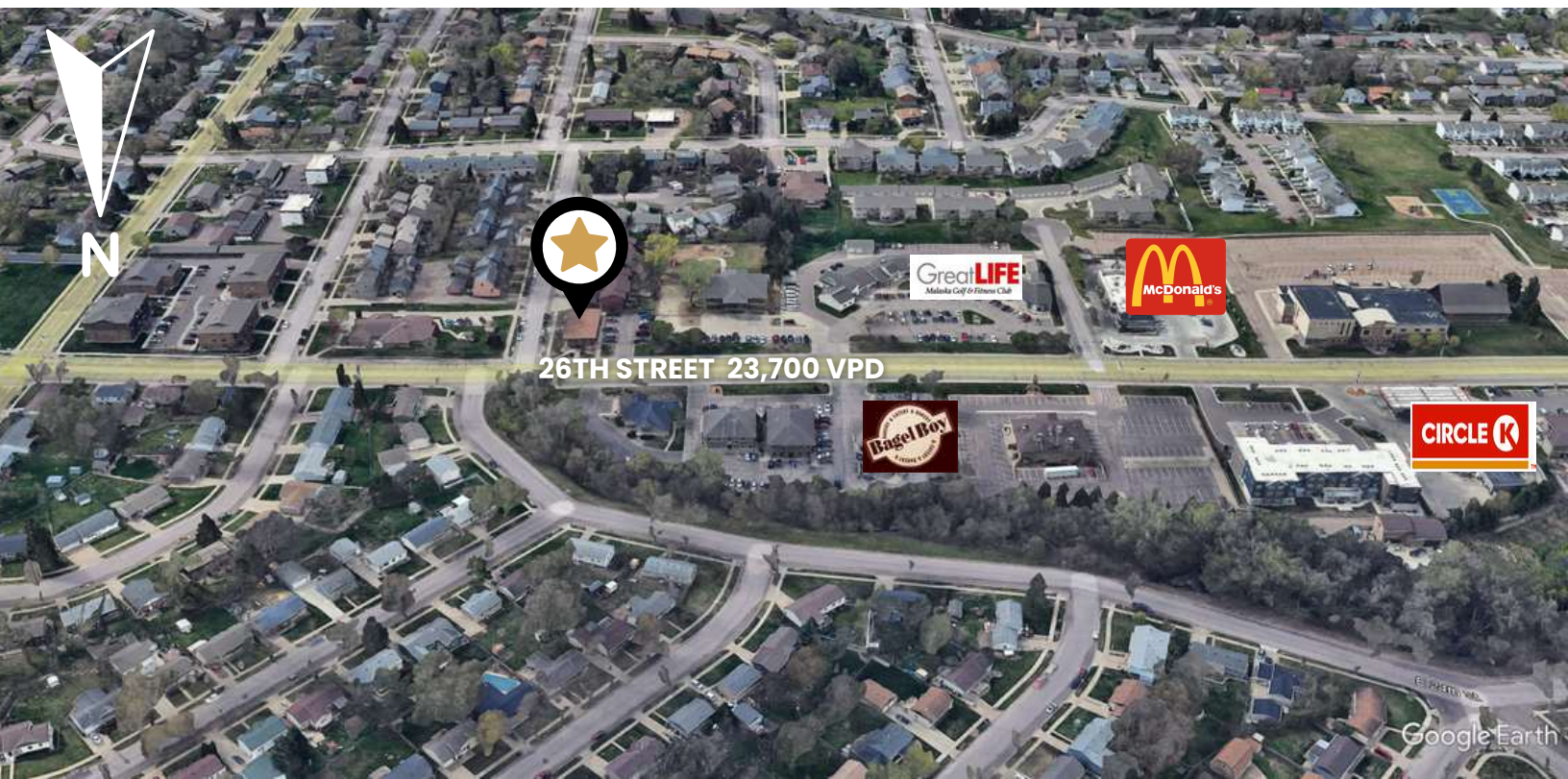
EXECUTIVE OFFICES FOR LEASE



EASTSIDE EXECUTIVE SUITES



EXECUTIVE OFFICES FOR LEASE



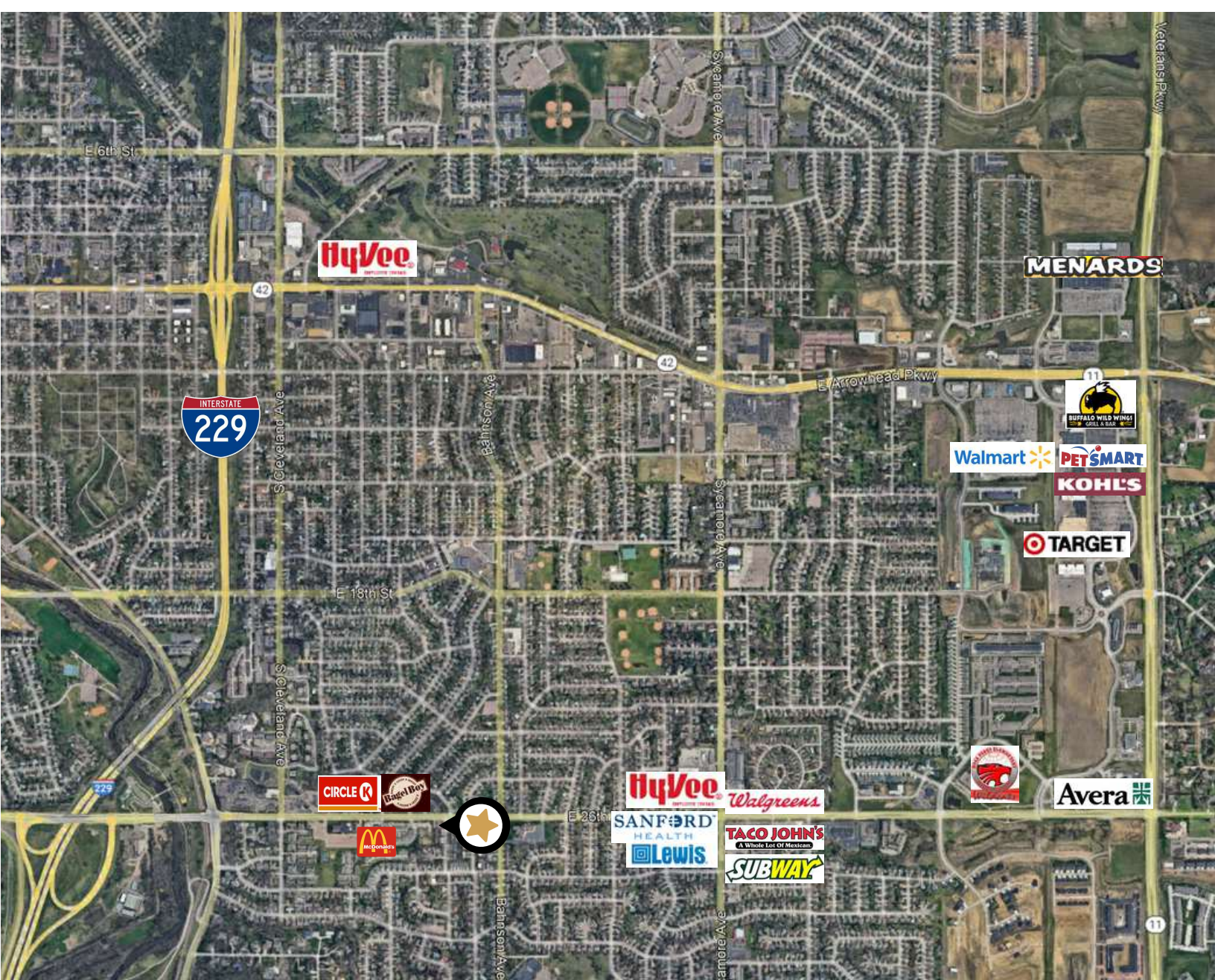
Bender Commercial Real Estate Services | 305 West 57th Street | Sioux Falls, SD 57108 | 605-336-7600 | benderco.com

2026 Bender Companies. Information herein deemed reliable, but not guaranteed.

EASTSIDE EXECUTIVE SUITES



EXECUTIVE OFFICES FOR LEASE



LOCATION HIGHLIGHTS

- 0.5 miles from 26th Street and Southeastern Avenue intersection
- 0.8 miles from I-229 26th Street exit
- 0.7 miles from 26th Street and Sycamore Avenue intersection
- 2.5 miles from Dawley Farms shopping area