



**FOR LEASE**

# WESTERN MALL

OFFICE/RETAIL SPACE

**Bender**  
COMMERCIAL



**2101 WEST 41ST STREET, SUITE 4  
SIOUX FALLS, SD**



**1,525 SF**



**\$14.00/SF NNN  
EST. NNNs: \$5.03/SF**

- Office or retail space located inside the Western Mall.
- Includes an open reception area, five (5) rooms and one (1) restroom.
- Highly visible space in the heart of the mall.
- Opportunity to advertise on digital billboards along 41st Street (19,200 vpd) and Western Avenue (22,000 vpd).
- Western Mall tenancy includes Scheels, Best Buy, West Mall 7 Theatres, 605 NINJA, South Dakota Furniture Mart, All Day Cafe, and Reach Literacy.
- One or more members of ownership are licensed real estate brokers in the state of SD.

**ISAAC JORGENSEN** | [isaac@benderco.com](mailto:isaac@benderco.com) | 605-799-5058



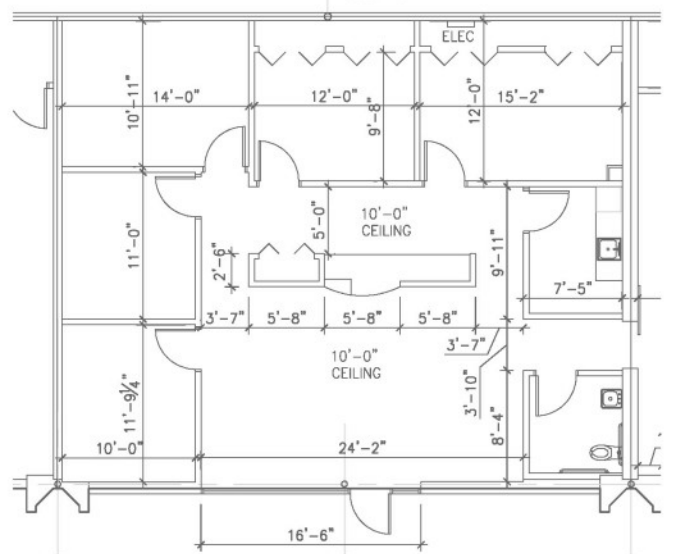
Bender Commercial Real Estate Services | 305 West 57th Street | Sioux Falls, SD 57108 | 605-336-7600 | [benderco.com](http://benderco.com)

© 2025 Bender Companies. Information herein deemed reliable, but not guaranteed.

# WESTERN MALL



## OFFICE/RETAIL SPACE FOR LEASE



Bender Commercial Real Estate Services | 305 West 57th Street | Sioux Falls, SD 57108 | 605-336-7600 | [benderco.com](http://benderco.com)

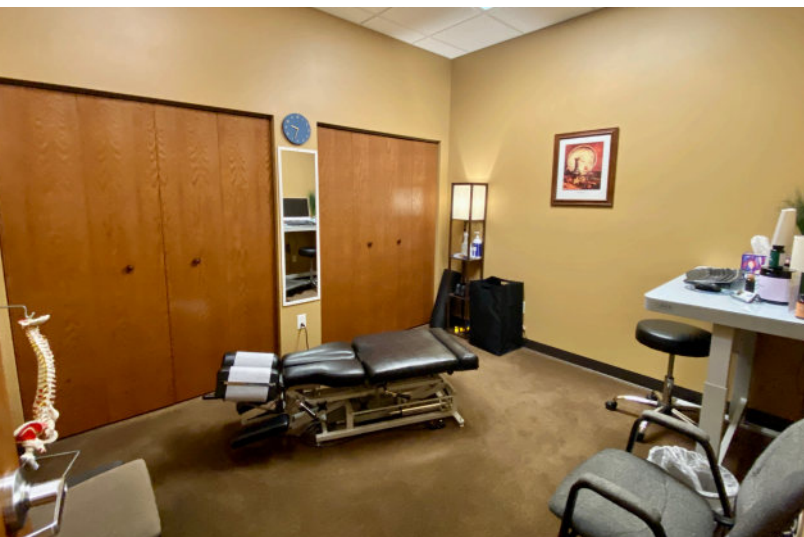
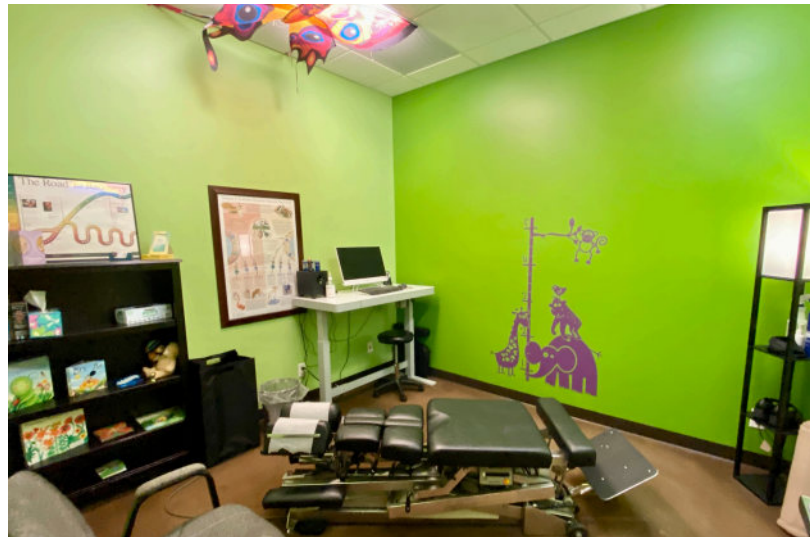
2025 Bender Companies. Information herein deemed reliable, but not guaranteed.



# WESTERN MALL



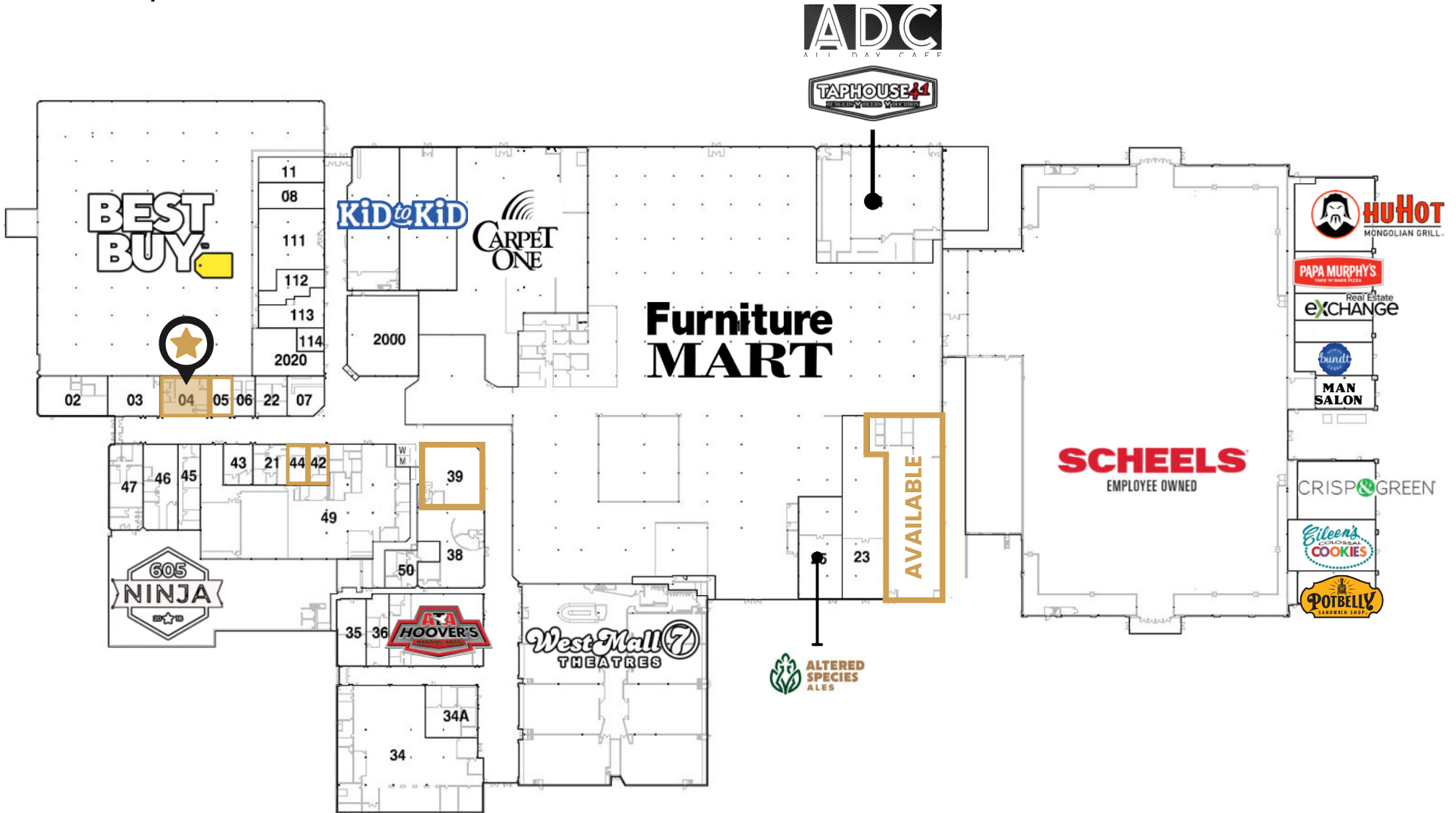
## OFFICE/RETAIL SPACE FOR LEASE



# WESTERN MALL



## OFFICE/RETAIL SPACE FOR LEASE





# WESTERN MALL



## OFFICE/RETAIL SPACE FOR LEASE



- 0.25 miles south of 41st Street
- 0.75 miles north of the I-229 Western Avenue exit.
- 3 miles northeast of the I-29 and I-229 interchange.



## OFFICE/RETAIL SPACE FOR LEASE

### DEMOGRAPHIC SUMMARY

#### KEY FACTS

93,405

Population

37.1

Median Age



40,379

Households

\$53,858

Median Disposable Income

#### INCOME



\$61,777

Median Household Income



\$40,460

Per Capita Income



\$102,034

Median Net Worth



#### EDUCATION

5%

No High School Diploma



22%

High School Graduate



31%

Some College



42%

Bachelor's/Grad/Prof Degree

#### EMPLOYMENT



70%

White Collar



19%

Blue Collar



14%

Services

2.7%

Unemployment Rate

LOCATION: 2101 West 41st Street, Sioux Falls, SD

RADIUS: Ring of 3 miles

SOURCE: ESRI