

FREE RENT



WILLOW CREEK BUILDING

PROFESSIONAL OFFICE SPACE

Bender
COMMERCIAL



**1704 S. CLEVELAND AVENUE, SUITE 5
SIOUX FALLS, SD**



2,390 RSF



**\$12.00/SF NNN
EST. NNNs: \$4.97/SF**

- Professional office space located in the Willow Creek Building near 26th Street in east Sioux Falls.
- Space consists of a reception area, seven (7) private offices and in-suite restroom.
- Parking ratio of 1 space per 213 SF.
- Great eastside location with quick access to 26th Street and I-229.
- *Three months free rent for acceptable lease.*

BOBBIE TIBBETTS

bobbie@benderco.com
605-670-9455

NICK GUSTAFSON, CCIM

nick@benderco.com
605-201-2809



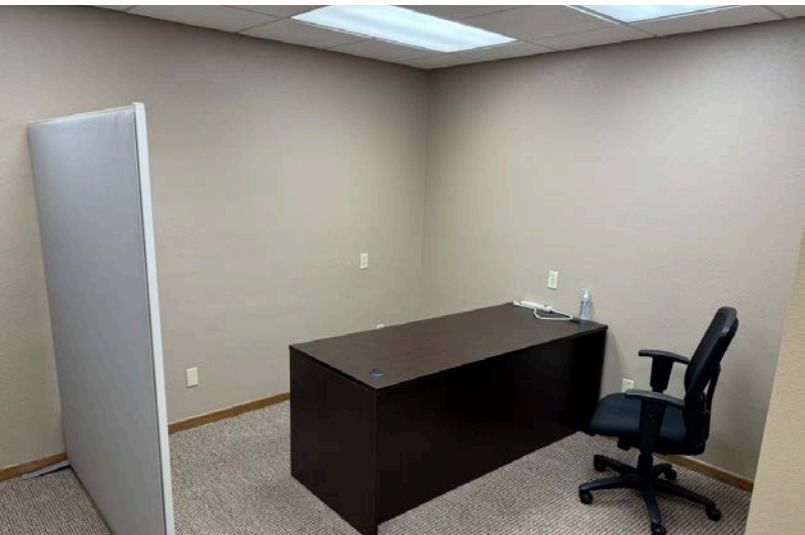
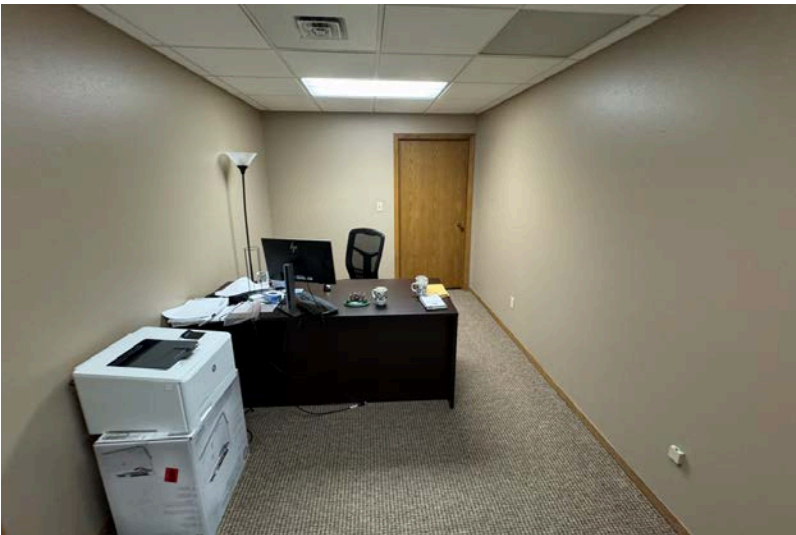
Bender Commercial Real Estate Services | 305 West 57th Street | Sioux Falls, SD 57108 | 605-336-7600 | benderco.com

© 2024 Bender Companies. Information herein deemed reliable, but not guaranteed.

WILLOW CREEK BUILDING



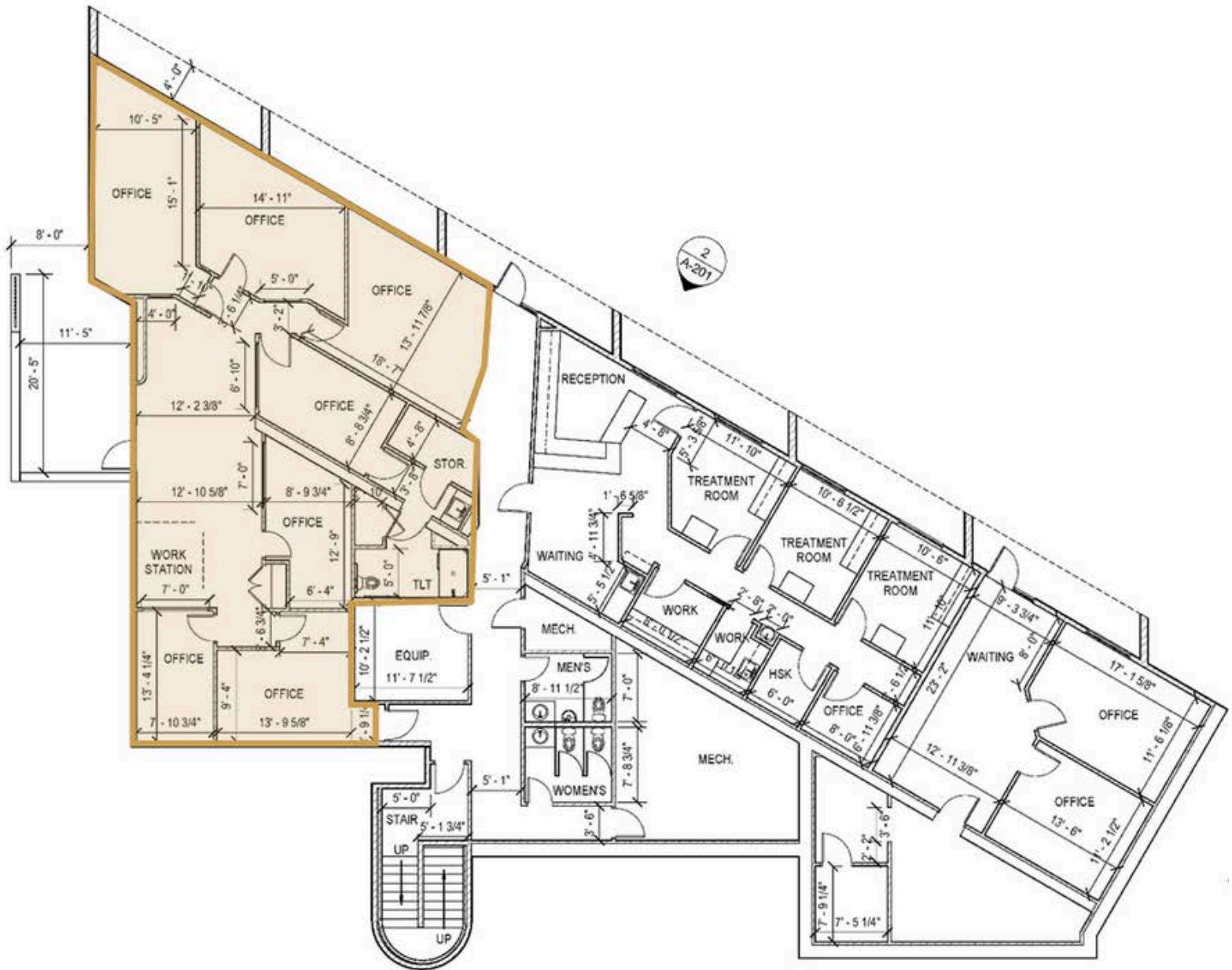
OFFICE SPACE FOR LEASE



WILLOW CREEK BUILDING



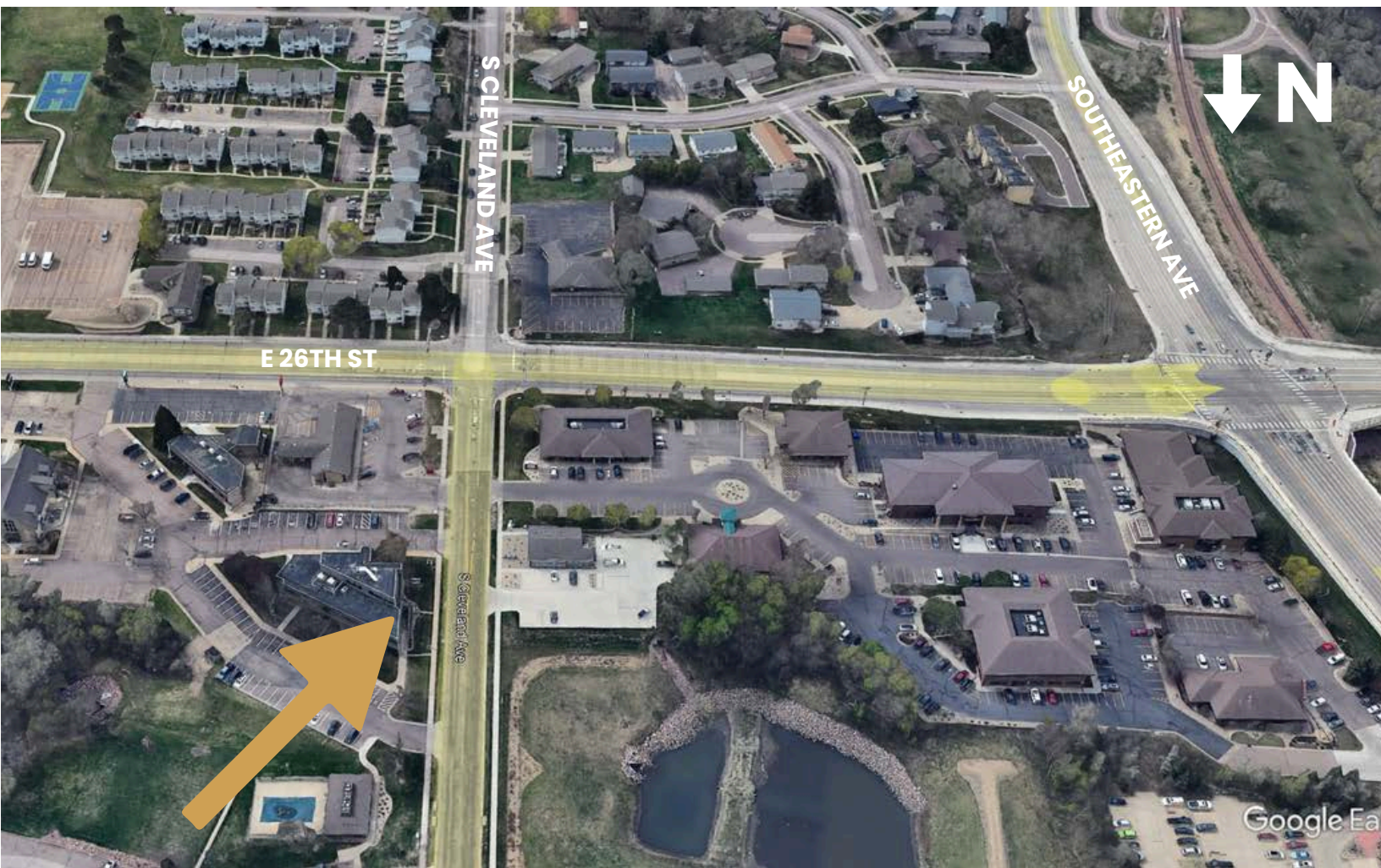
OFFICE SPACE FOR LEASE



WILLOW CREEK BUILDING



OFFICE SPACE FOR LEASE



Bender Commercial Real Estate Services | 305 West 57th Street | Sioux Falls, SD 57108 | 605-336-7600 | benderco.com

2024 Bender Companies. Information herein deemed reliable, but not guaranteed.

WILLOW CREEK BUILDING



OFFICE SPACE FOR LEASE

