

FOR LEASE



SULLIVANS WAREHOUSE

WAREHOUSE AND OFFICE SPACE

Bender
COMMERCIAL



**3101 NORTH 4TH AVENUE
SIOUX FALLS, SD**



137,424 SF



\$7.25/SF NNN

- Large warehouse available along North 4th Avenue in north Sioux Falls.
- Nine (9) 10' dock-high doors. Seven (7) with self-levelers.
- One 14' grade-level door.
- 27' clear height, sprinkled.
- 1000 amp, 277/480, 3-Phase Power.
- Warehouse has ventilation cooling system.
- Office space includes reception, open show room and work area, private offices, conference room, break room and restrooms.
- Racking and two garbage compactor are negotiable.
- Ample on-site parking.
- Lot size: 8.39 acres.

BRADYN NEISES, SIOR

bradyn@benderco.com

605-782-1682

MICHAEL BENDER, CCIM, SIOR

michael@benderco.com

605-782-1662



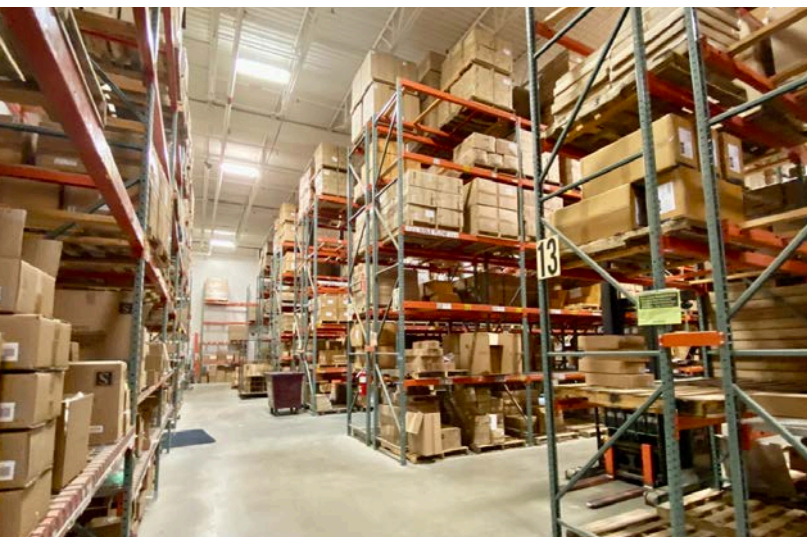
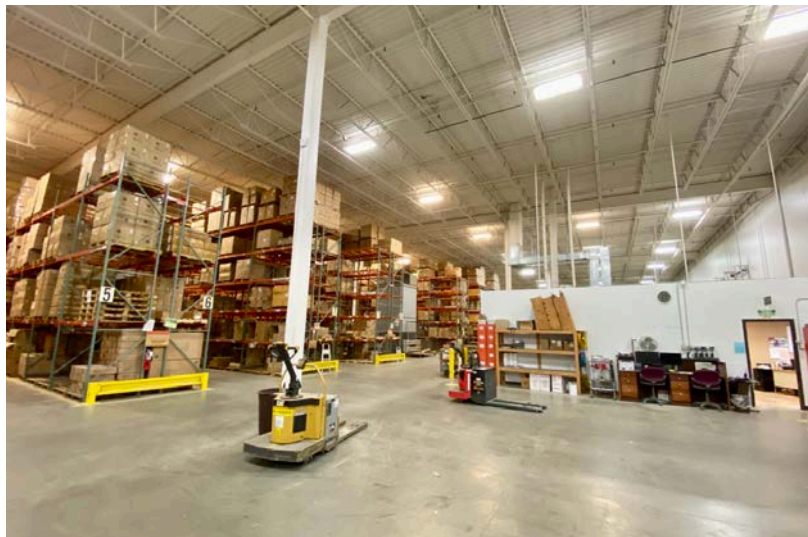
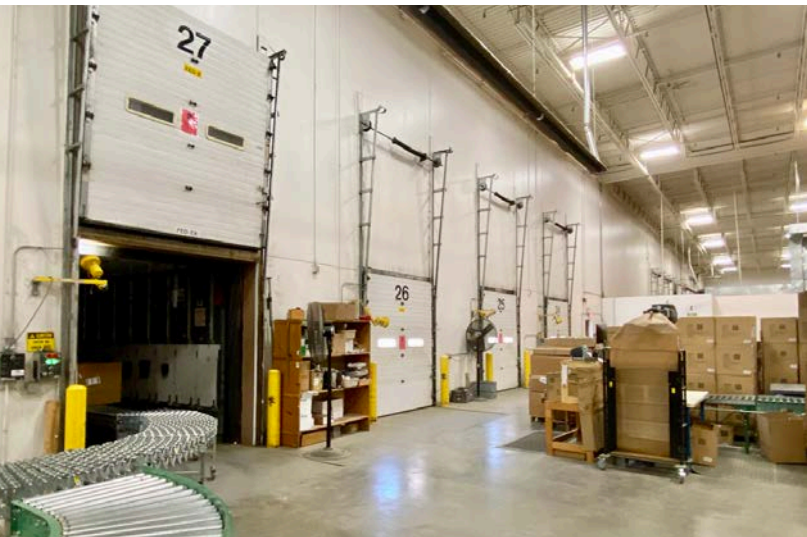
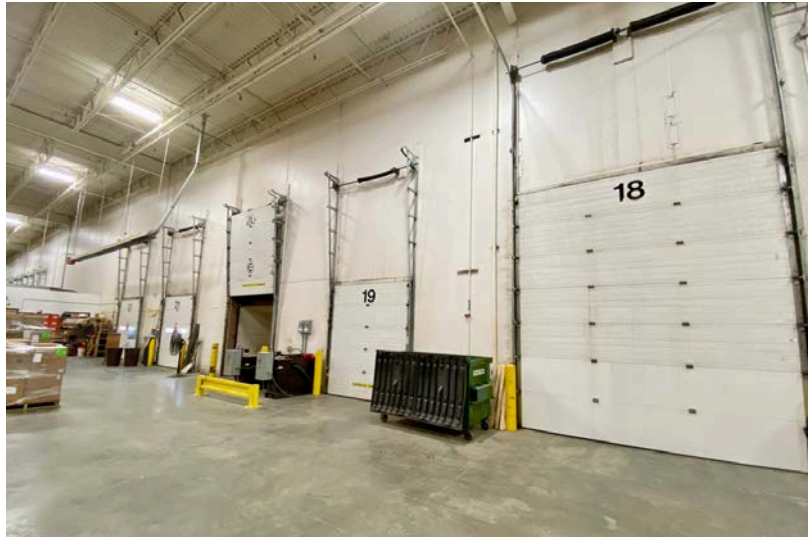
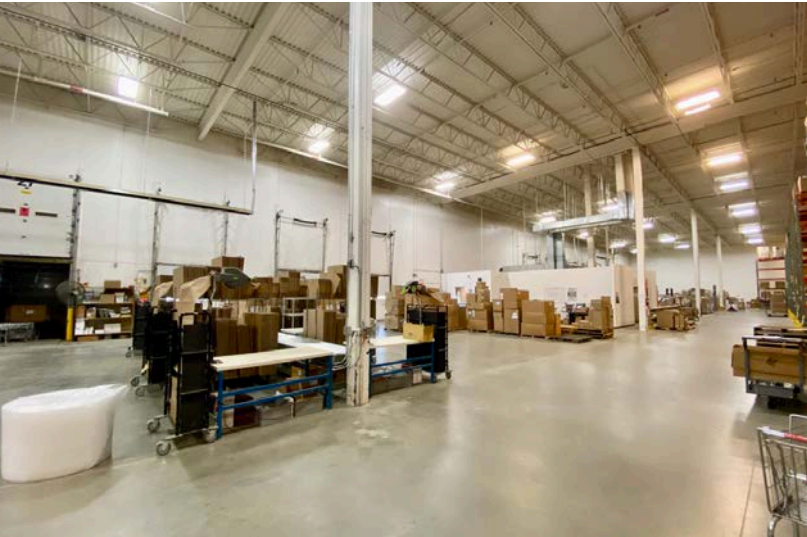
Bender Commercial Real Estate Services | 305 West 57th Street, Sioux Falls, SD 57108 | 605-336-7600 | benderco.com

© 2025 Bender Companies. Information herein deemed reliable, but not guaranteed.

SULLIVANS WAREHOUSE



WAREHOUSE & OFFICE SPACE FOR LEASE



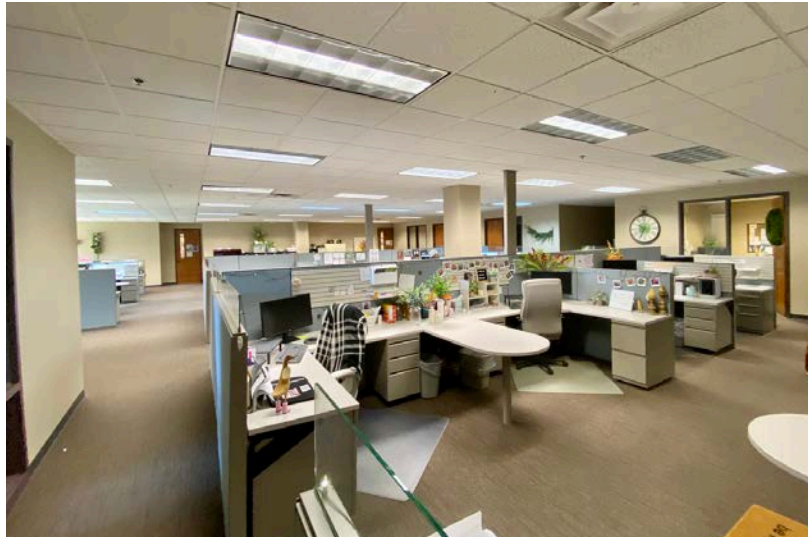
Bender Commercial Real Estate Services | 305 West 57th Street | Sioux Falls, SD 57108 | 605-336-7600 | benderco.com

2025 Bender Companies. Information herein deemed reliable, but not guaranteed.

SULLIVANS WAREHOUSE



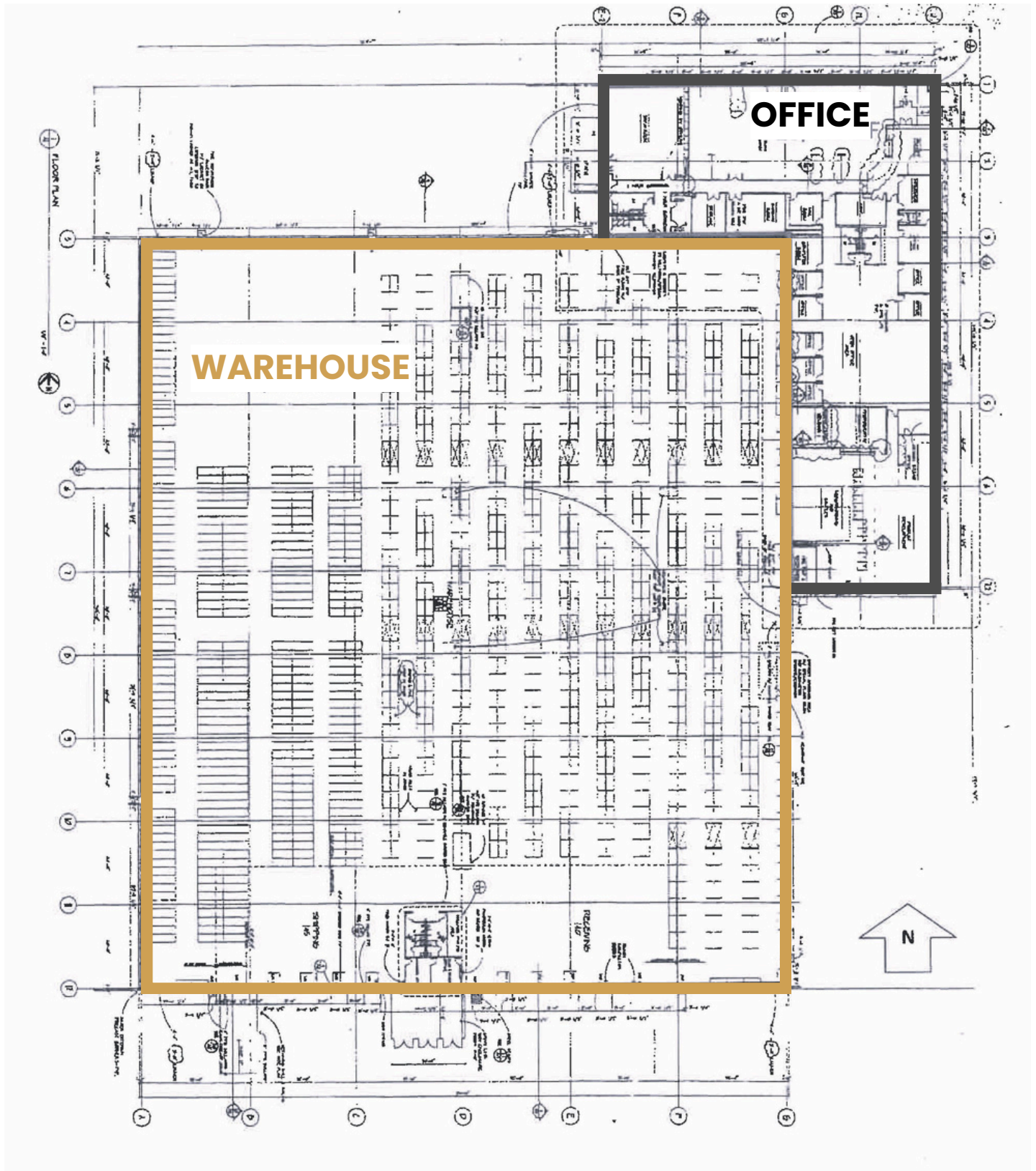
WAREHOUSE & OFFICE SPACE FOR LEASE



SULLIVANS WAREHOUSE



WAREHOUSE & OFFICE SPACE FOR LEASE



SULLIVANS WAREHOUSE



WAREHOUSE & OFFICE SPACE FOR LEASE



SULLIVANS WAREHOUSE



WAREHOUSE & OFFICE SPACE FOR LEASE

