

FOR SALE

MARION SQUARE LAND

DEVELOPMENT LAND FOR SALE

Bender
COMMERCIAL



**2400 N MARION RD
SIOUX FALLS, SD**



**TOTAL: 18.59 AC+/-
USEABLE: 12.44 AC+/-**



**\$2,980,000 (\$5.50/SF, BASED ON
541,887+/- SF OF USEABLE LAND)**

- Development land available to the northeast of the signalized intersection at Marion Road and Maple Street in rapidly growing northwest Sioux Falls.
- Zoned C-2 Commercial, Live-Work and CN.
- Easy access and great visibility with a combined traffic count of 14,700 vehicles per day.
- Close proximity to Jefferson High School, George McGovern Middle School, Career and Technical Education Academy, USD Community College of Sioux Falls and Southeast Technical Institute.
- Contact Broker for additional information.
- **Located in an Opportunity Zone.**

ALEX SOUNDY, SIOR | alex@benderco.com | 605-376-3700

Co-listed with Todd Syhre at EXP Commercial Real Estate



Bender Commercial Real Estate Services | 305 West 57th Street | Sioux Falls, SD 57108 | 605-336-7600 | benderco.com

© 2025 Bender Companies. Information herein deemed reliable, but not guaranteed.

MARION SQUARE LAND



DEVELOPMENT LAND FOR SALE



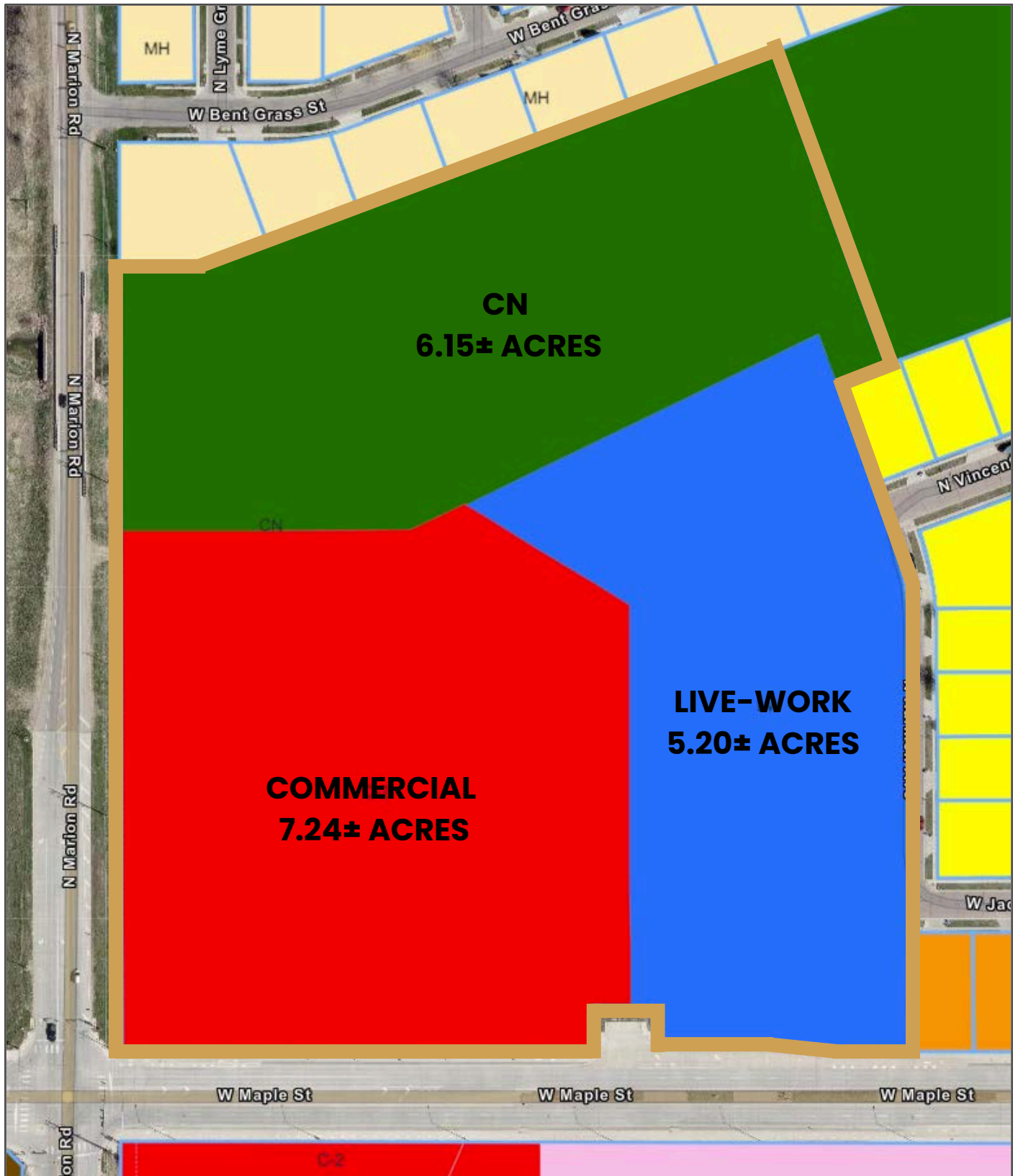
Bender Commercial Real Estate Services | 305 West 57th Street | Sioux Falls, SD 57108 | 605-336-7600 | benderco.com

2025 Bender Companies. Information herein deemed reliable, but not guaranteed.

MARION SQUARE LAND



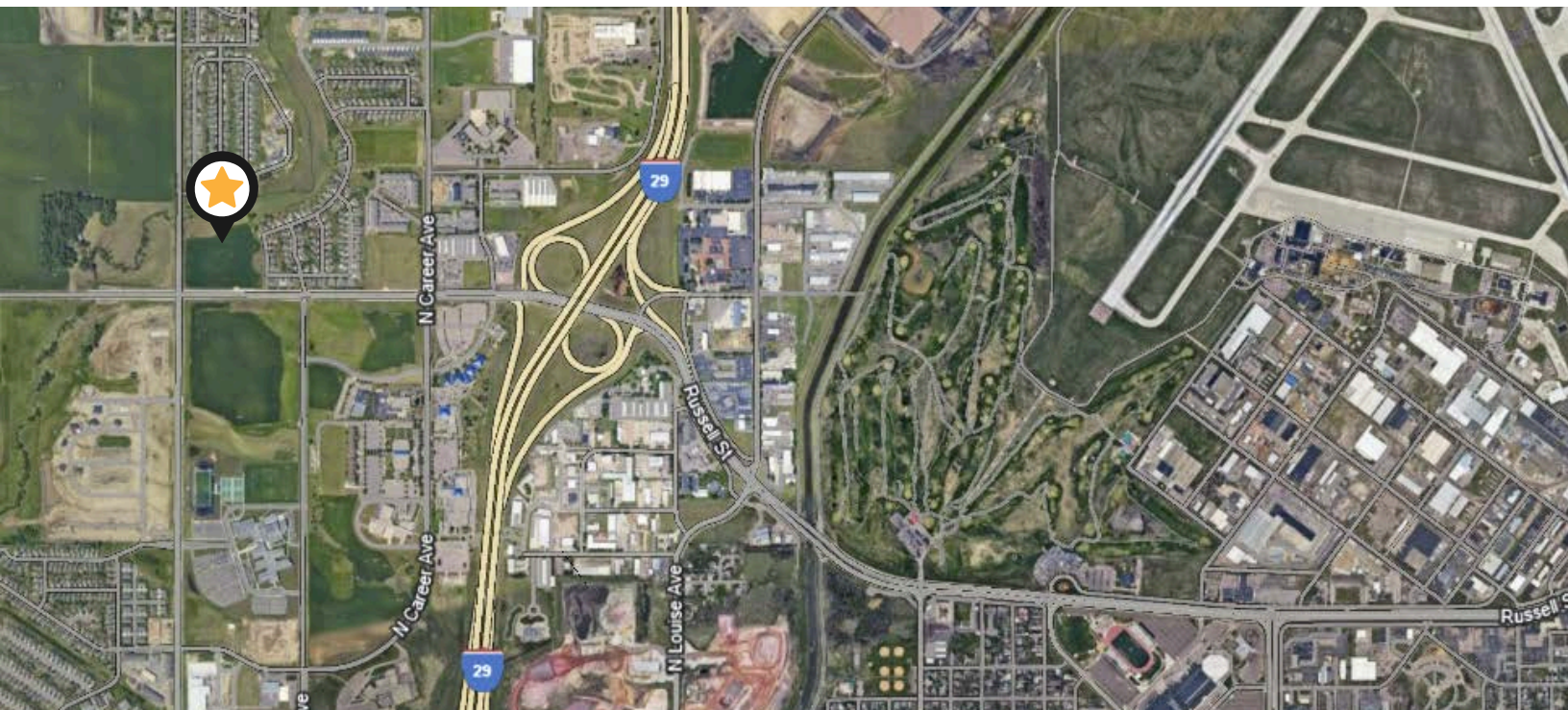
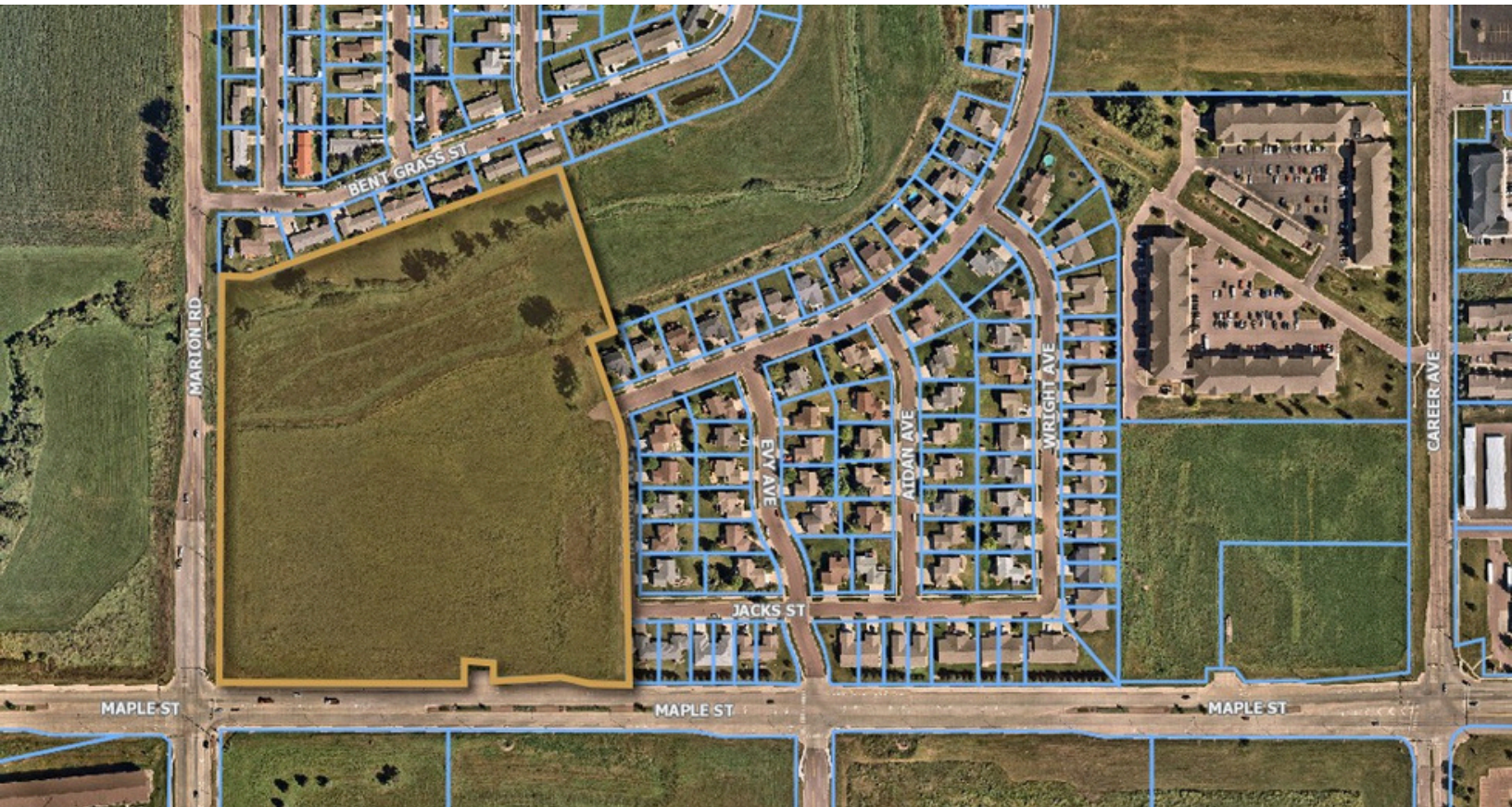
ZONING INFORMATION



MARION SQUARE LAND



DEVELOPMENT LAND FOR SALE



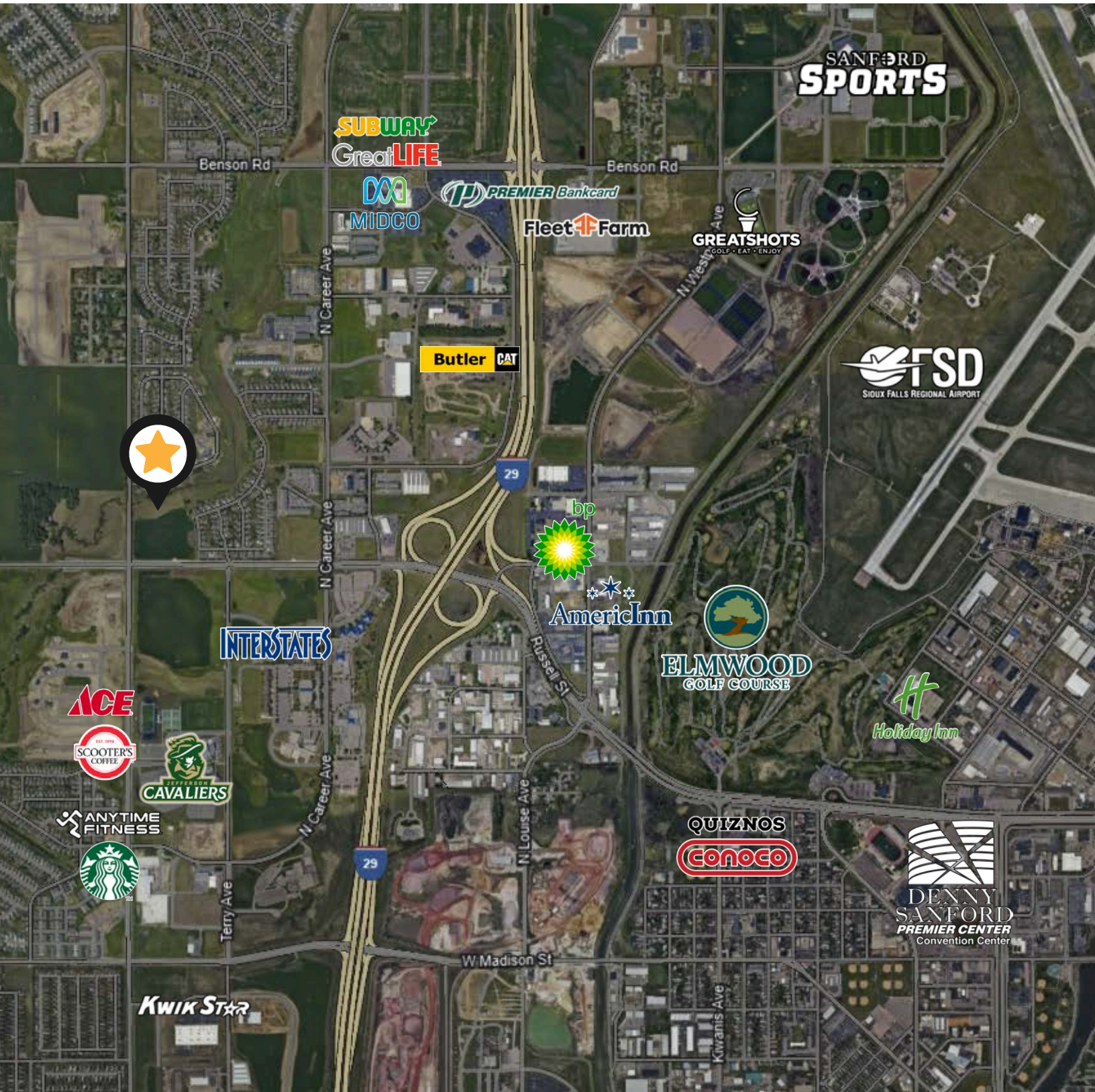
Bender Commercial Real Estate Services | 305 West 57th Street | Sioux Falls, SD 57108 | 605-336-7600 | benderco.com

2025 Bender Companies. Information herein deemed reliable, but not guaranteed.

MARION SQUARE LAND



DEVELOPMENT LAND FOR SALE



MARION SQUARE LAND



AREA DEMOGRAPHICS

1 MILE

KEY FACTS

4,471
Population

2.4
Average
Household Size

30.3
Median Age

\$72,479
Median Household
Income

BUSINESS

107
Total Businesses

2,471
Total Employees

EMPLOYMENT

White Collar
Blue Collar
Services

59.7%
21.6%
18.6%

1.6%
Unemployment
Rate

INCOME

\$72,479
Median Household
Income

\$34,761
Per Capita Income

\$86,374
Median Net Worth

EDUCATION

6.0%
No High School
Diploma

23.0%
High School
Graduate

33.9%
Some College/
Associate's
Degree

37.0%
Bachelor 's/Grad/
Prof Degree

HOUSING STATS

\$266,507
Median Home
Value

\$9,113
Average Spent on
Mortgage & Basics

\$910
Median Contract
Rent

5 MILES

KEY FACTS

106,621
Population

2.3
Average
Household Size

35.7
Median Age

\$65,746
Median Household
Income

BUSINESS

6,318
Total Businesses

98,281
Total Employees

EMPLOYMENT

White Collar
Blue Collar
Services

58.8%
24.0%
17.1%

2.0%
Unemployment
Rate

INCOME

\$65,746
Median Household
Income

\$38,002
Per Capita Income

\$115,142
Median Net Worth

EDUCATION

7.0%
No High School
Diploma

26.5%
High School
Graduate

34.1%
Some College/
Associate's
Degree

32.4%
Bachelor 's/Grad/
Prof Degree

HOUSING STATS

\$254,206
Median Home
Value

\$9,849
Average Spent on
Mortgage & Basics

\$817
Median Contract
Rent