



FOR SALE

REDSTONE MULTI-FAMILY SITE

Bender COMMERCIAL



**5801 NORTH KIWANIS AVENUE
SIOUX FALLS, SD**



6.7 ACRES



\$ \$6.00/SF

- Multi-family land along North Kiwanis Avenue in northwest Sioux Falls.
- Zoned LW Live-Work.
- Located in an Opportunity Zone.
- Additional land available.
- Great location near the Sanford Sports Complex, Foundation Park, Fleet Farm, and Sioux Falls Airport.
- Great visibility with a combined I-29/I-90 traffic count of 69,220 ADT.
- Additional land available - contact broker for details.

ROB KURTENBACH

rk@benderco.com
605-940-0559

REGGIE KUIPERS, SIOR

reggie@benderco.com
605-496-2966



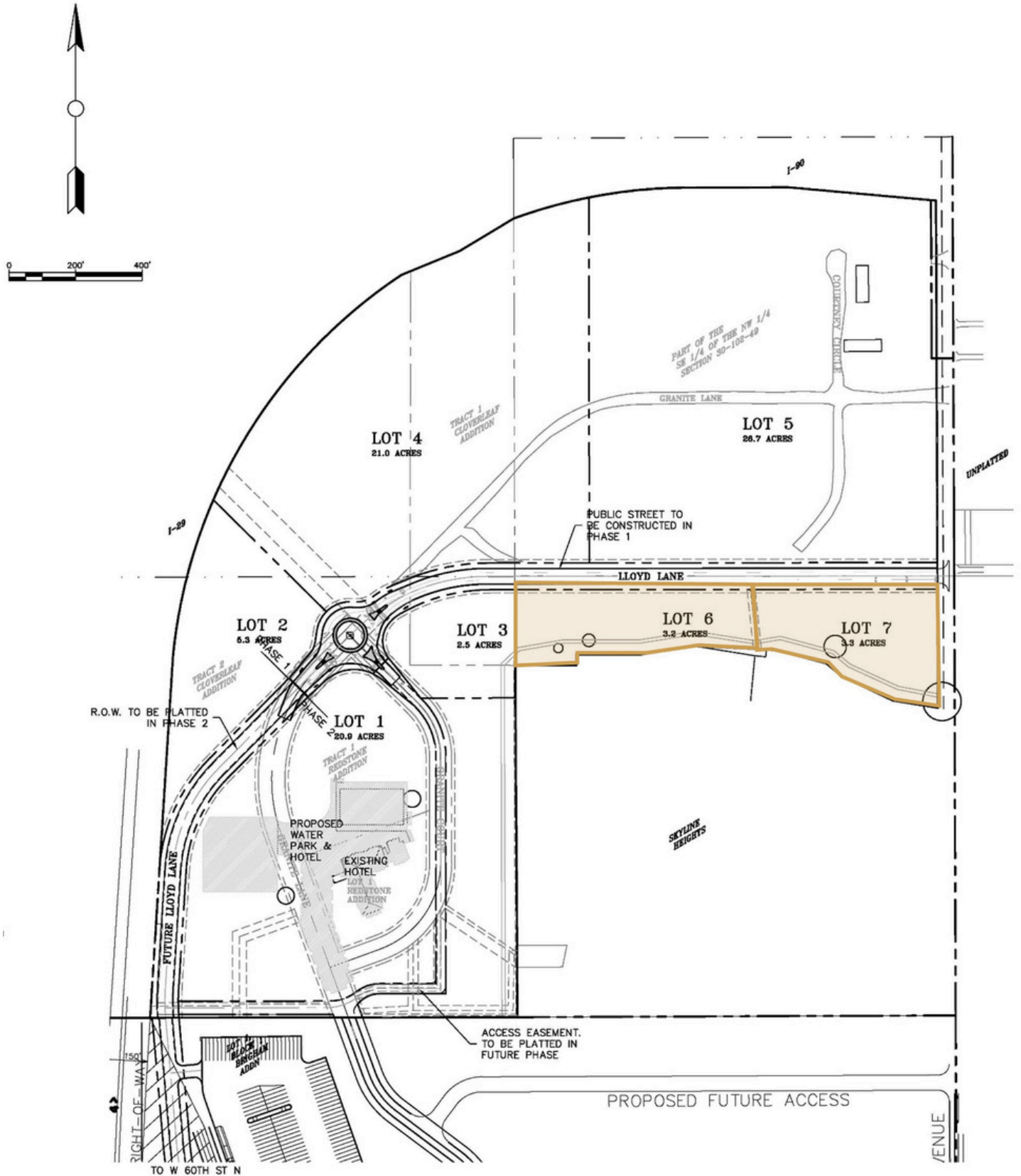
Bender Commercial Real Estate Services | 305 West 57th Street | Sioux Falls, SD 57108 | 605-336-7600 | benderco.com

© 2025 Bender Companies. Information herein deemed reliable, but not guaranteed.

REDSTONE MULTI-FAMILY SITE



CONCEPT LAYOUT



REDSTONE MULTI-FAMILY SITE



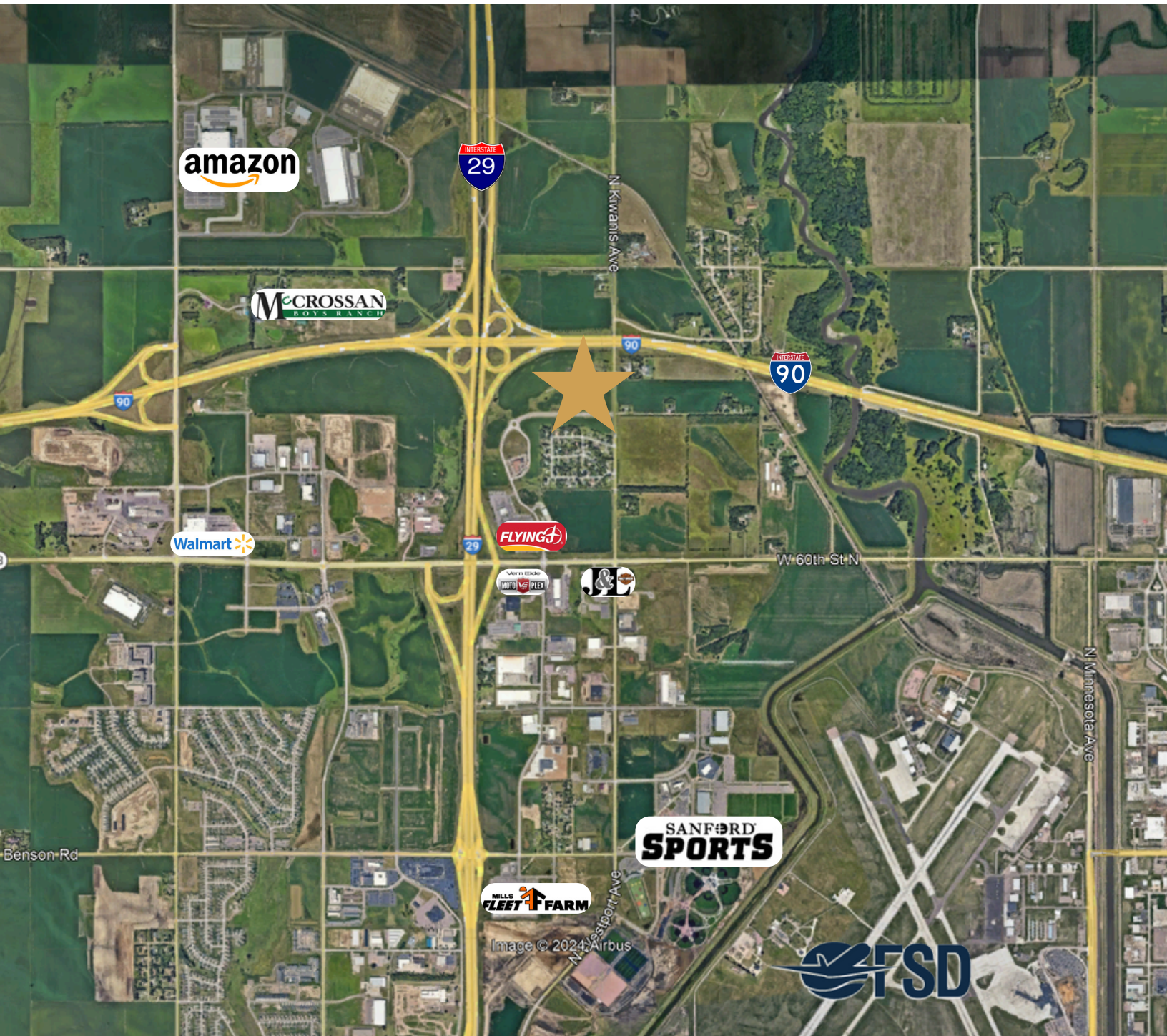
DEVELOPMENT LAND



REDSTONE MULTI-FAMILY SITE



DEVELOPMENT LAND



REDSTONE MULTI-FAMILY SITE



DEVELOPMENT LAND

