

**FOR LEASE**



# ASPEN BLVD WAREHOUSE

## Bender COMMERCIAL



**616 SOUTH SIOUX BOULEVARD  
BRANDON, SD**



**16,600 SF**



**\$5.95/SF  
GROSS + UTILITIES**

- Warehouse/manufacturing space located on the corner of South Sioux Boulevard and Aspen Boulevard in central Brandon.
- Small office/breakroom.
- Two (2) dock-high doors.
- One (1) 12' x 12' and one (1) 10' x 10' grade-level doors.
- 120/240V 3-phase power.
- Forced-air natural gas heat.
- Building signage available.
- Easy access to Highway 11 and I-90.

**ROB FAGNAN, SIOR** | [rob@benderco.com](mailto:rob@benderco.com) | 605-521-5444



Bender Commercial Real Estate Services | 305 West 57th Street | Sioux Falls, SD 57108 | 605-336-7600 | [benderco.com](http://benderco.com)

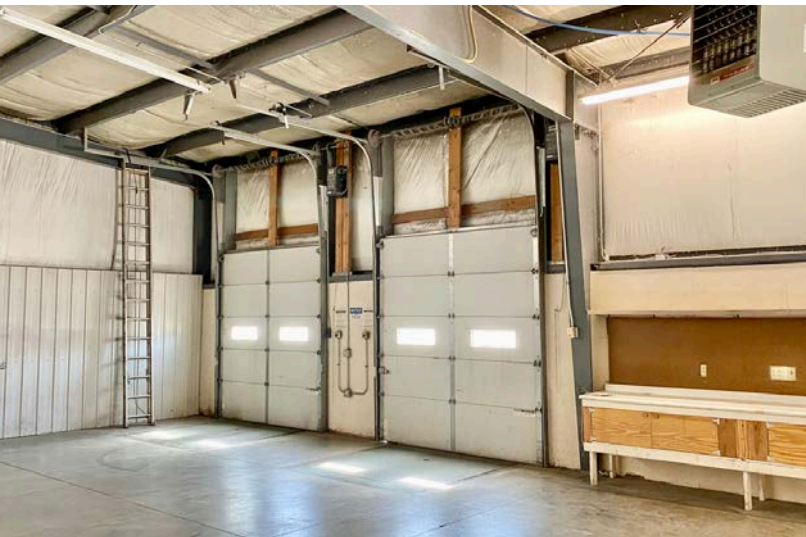
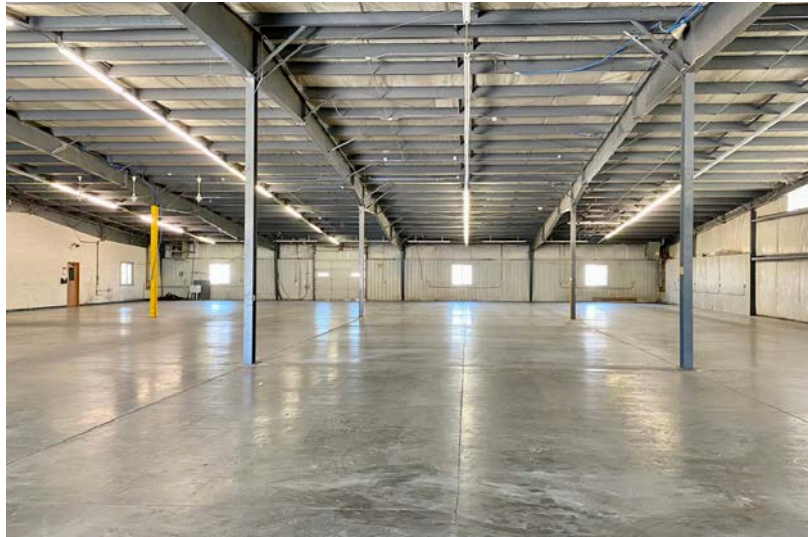
© 2025 Bender Companies. Information herein deemed reliable, but not guaranteed.



# ASPEN BLVD WAREHOUSE



WAREHOUSE/MANUFACTURING SPACE FOR LEASE



Bender Commercial Real Estate Services | 305 West 57th Street | Sioux Falls, SD 57108 | 605-336-7600 | [benderco.com](http://benderco.com)

2025 Bender Companies. Information herein deemed reliable, but not guaranteed.



# ASPEN BLVD WAREHOUSE



WAREHOUSE/MANUFACTURING SPACE FOR LEASE



Bender Commercial Real Estate Services | 305 West 57th Street | Sioux Falls, SD 57108 | 605-336-7600 | [benderco.com](http://benderco.com)

2025 Bender Companies. Information herein deemed reliable, but not guaranteed.



# ASPEN BLVD WAREHOUSE



WAREHOUSE/MANUFACTURING SPACE FOR LEASE

