

FOR LEASE



WESTERN MALL

RETAIL SPACE

Bender
COMMERCIAL



**2101 WEST 41ST STREET, SUITE 39
SIOUX FALLS, SD**



3,360 SF



**\$10.00/SF NNN
EST NNNs: \$5.03/SF**

- Open retail space located inside the Western Mall.
- Includes a breakroom and one (1) private office.
- Highly visible space with abundance of windows.
- Opportunity to advertise on digital billboards along 41st Street (19,200 vpd) and Western Avenue (22,000 vpd).
- Monument signage along Western Avenue.
- Western Mall tenancy includes Scheels, Best Buy, West Mall 7 Theatres, 605 NINJA, South Dakota Furniture Mart, All Day Cafe, and Reach Literacy.
- One or more members of ownership are licensed real estate brokers in the state of SD.

ISAAC JORGENSEN | isaac@benderco.com | 605-799-5058



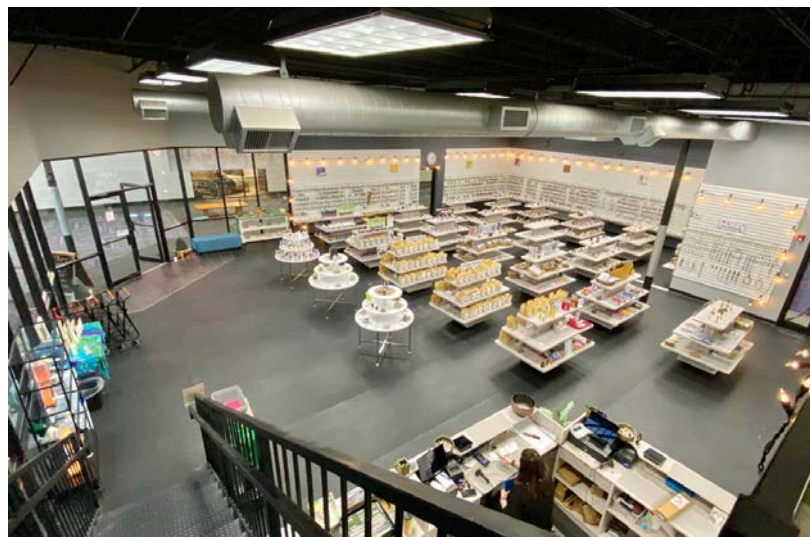
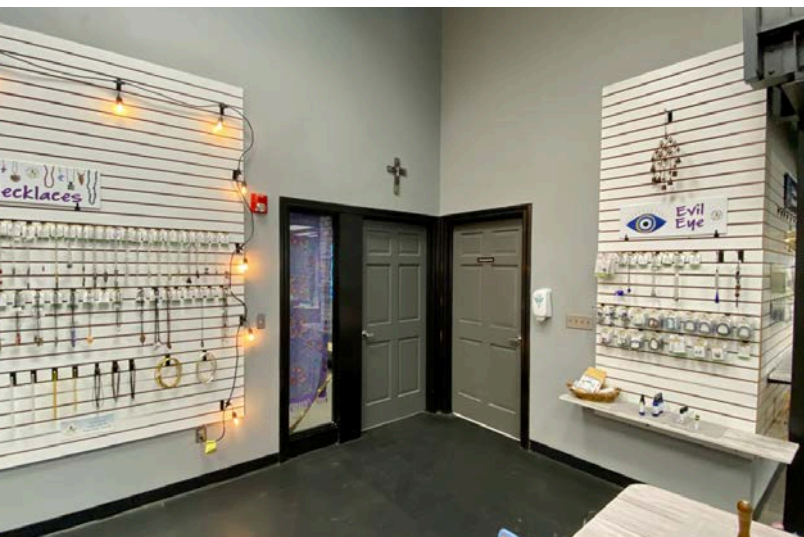
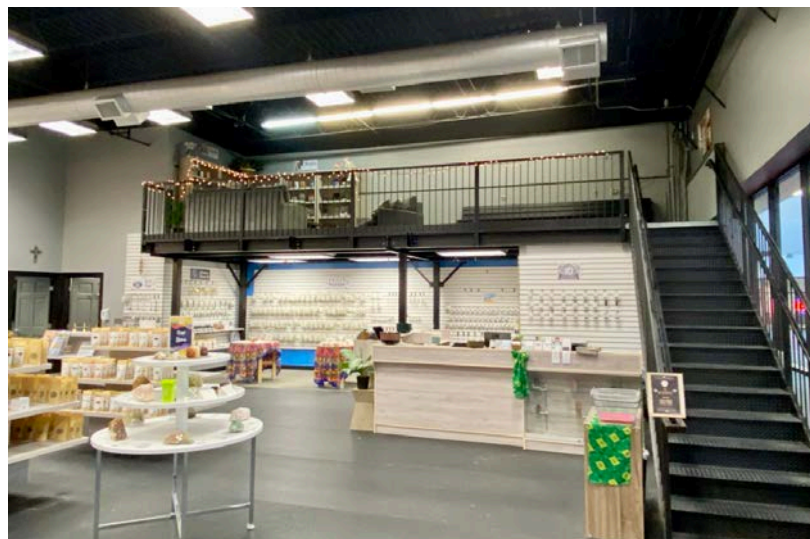
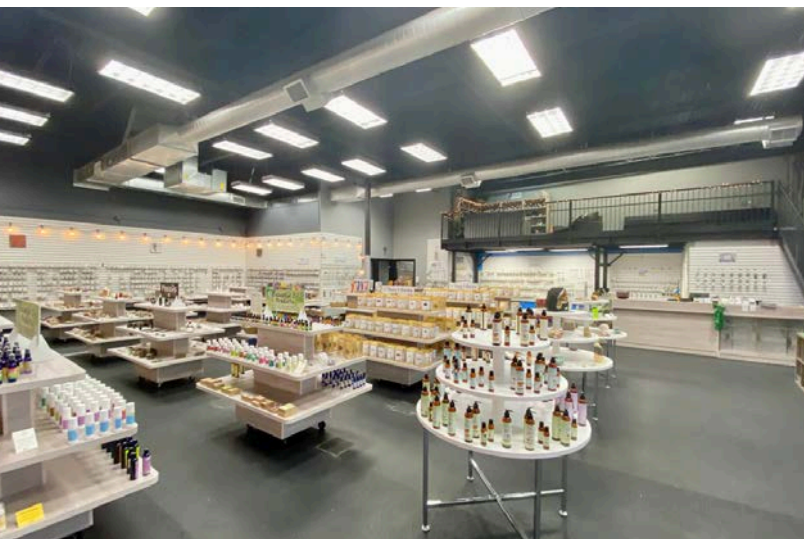
Bender Commercial Real Estate Services | 305 West 57th Street | Sioux Falls, SD 57108 | 605-336-7600 | benderco.com

© 2025 Bender Companies. Information herein deemed reliable, but not guaranteed.

WESTERN MALL



RETAIL SPACE FOR LEASE



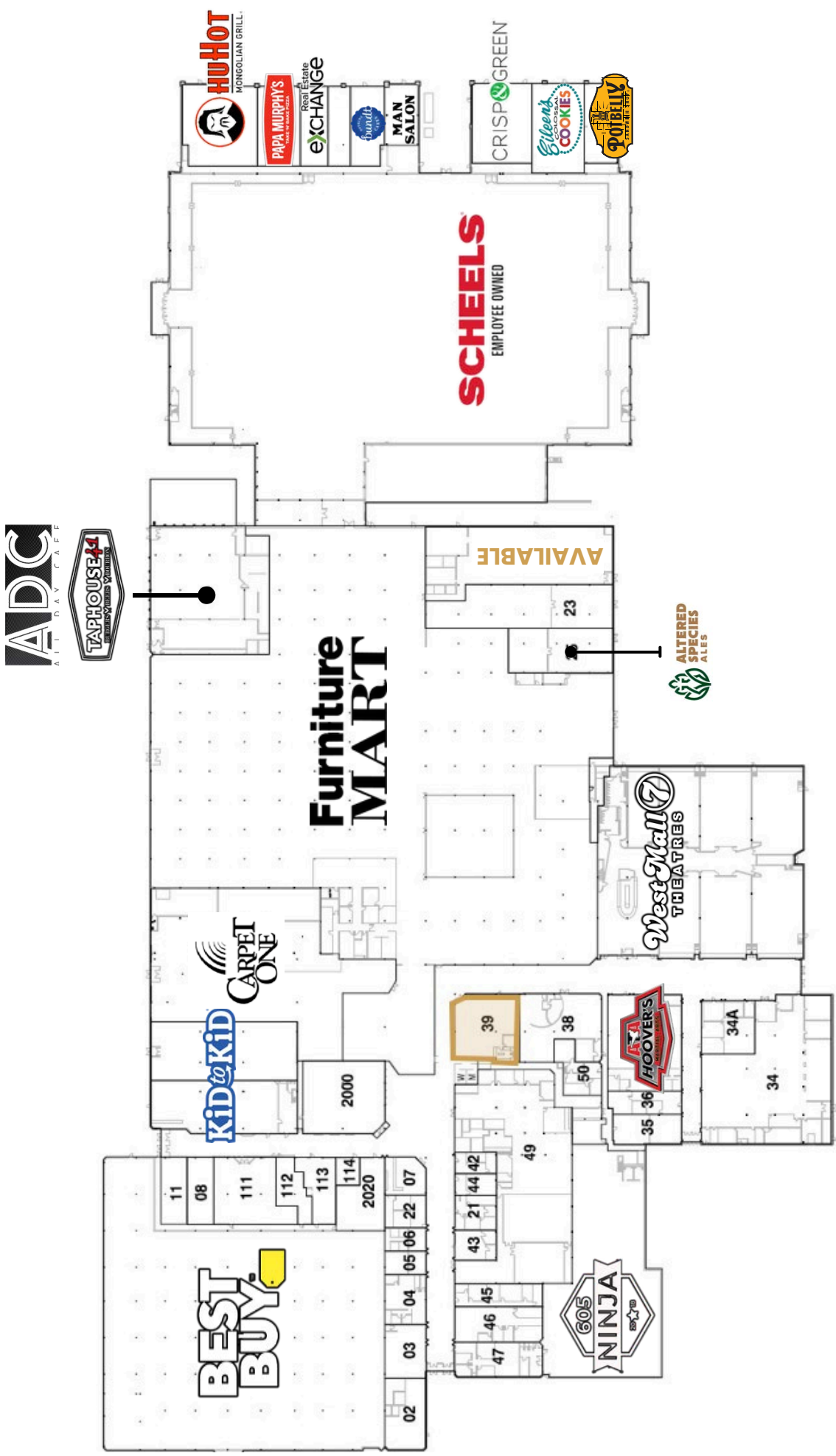
Bender Commercial Real Estate Services | 305 West 57th Street | Sioux Falls, SD 57108 | 605-336-7600 | benderco.com

2025 Bender Companies. Information herein deemed reliable, but not guaranteed.

WESTERN MALL



RETAIL SPACE FOR LEASE



WESTERN MALL



RETAIL SPACE FOR LEASE



- 0.25 miles south of 41st Street
- 0.75 miles north of the I-229 Western Avenue exit.
- 3 miles northeast of the I-29 and I-229 interchange.



RETAIL SPACE FOR LEASE

DEMOGRAPHIC SUMMARY

KEY FACTS

93,405

Population



40,379

Households

37.1

Median Age

\$53,858

Median Disposable Income

INCOME



\$61,777

Median Household Income



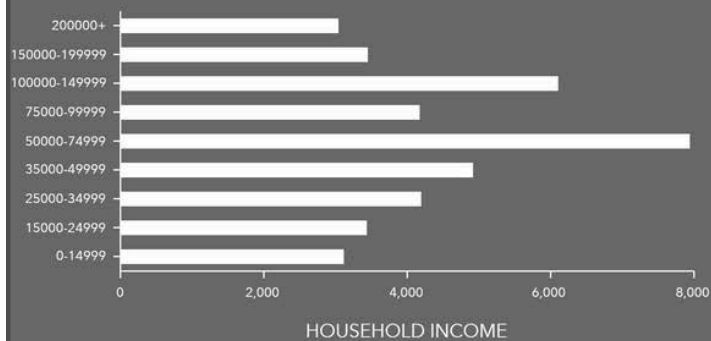
\$40,460

Per Capita Income



\$102,034

Median Net Worth



EDUCATION

5%

No High School Diploma



22%

High School Graduate



31%

Some College



42%

Bachelor's/Grad/Prof Degree

EMPLOYMENT



70%

White Collar



19%

Blue Collar



14%

Services

2.7%

Unemployment Rate

LOCATION: 2101 West 41st Street, Sioux Falls, SD

RADIUS: Ring of 3 miles

SOURCE: ESRI