

FOR SALE



VIBORG SERVICE STATION

COMMERCIAL PROPERTY & BUSINESS

Bender
COMMERCIAL



**121 N MAIN ST & 101 W BLAINE ST
VIBORG, SD**



**2 BUILDINGS
3,300 SF**



\$399,000

- Service station and warehouse along Main Street (Highway 19) in Viborg.
- Service station is 2,100 SF on 3,120 SF lot. Includes four (4) overhead doors, along with heat and air conditioning.
- Warehouse with living area is 1,200 SF on 4,828 SF lot. Includes two (2) overhead doors.
- Service station built in 1953. Warehouse built in 2014.
- Operating business and equipment included - contact broker for details.

COLE SHAWD

cole@benderco.com
605-999-5502

ROB KURTENBACH

rk@benderco.com
605-940-0559



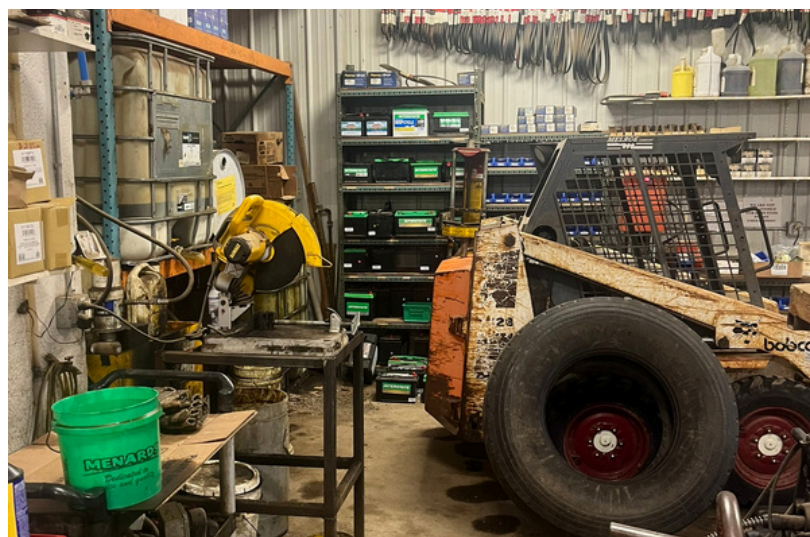
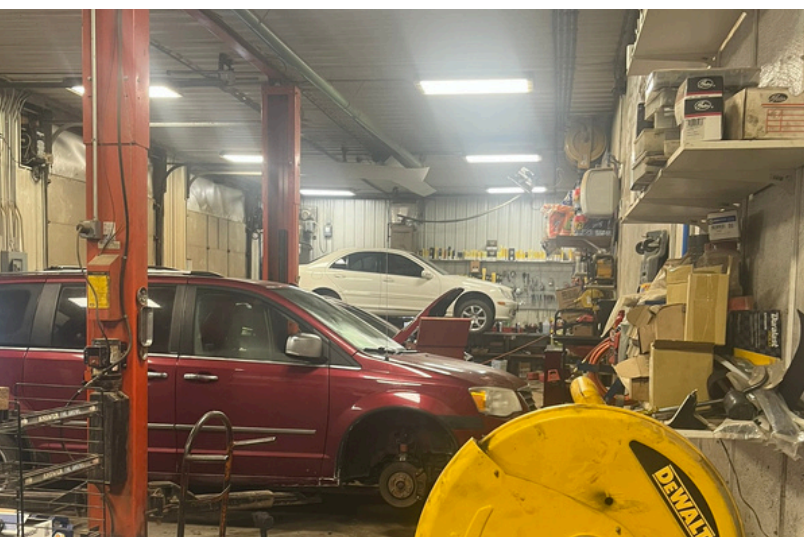
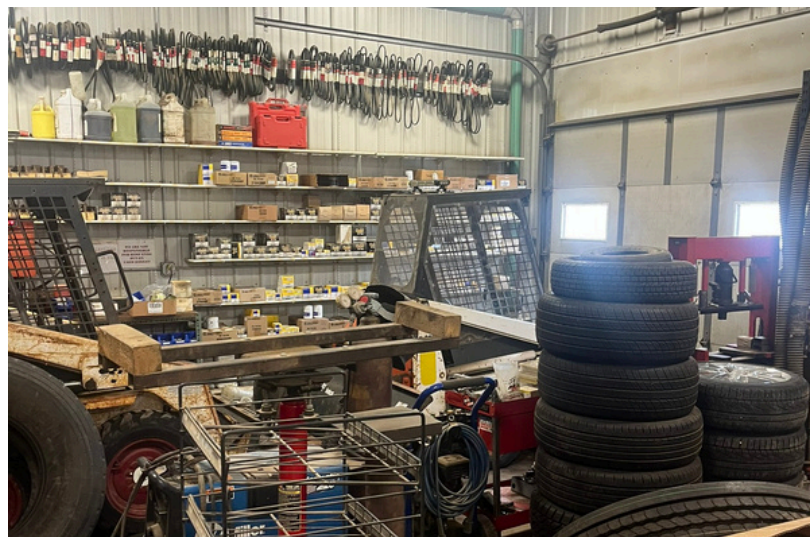
Bender Commercial Real Estate Services | 305 West 57th Street | Sioux Falls, SD 57108 | 605-336-7600 | benderco.com

© 2025 Bender Companies. Information herein deemed reliable, but not guaranteed.

VIBORG SERVICE STATION



COMMERCIAL PROPERTY & BUSINESS



Bender Commercial Real Estate Services | 305 West 57th Street | Sioux Falls, SD 57108 | 605-336-7600 | benderco.com

2025 Bender Companies. Information herein deemed reliable, but not guaranteed.

VIBORG SERVICE STATION



COMMERCIAL PROPERTY & BUSINESS



Bender Commercial Real Estate Services | 305 West 57th Street | Sioux Falls, SD 57108 | 605-336-7600 | benderco.com

2025 Bender Companies. Information herein deemed reliable, but not guaranteed.

VIBORG SERVICE STATION



COMMERCIAL PROPERTY & BUSINESS



Bender Commercial Real Estate Services | 305 West 57th Street | Sioux Falls, SD 57108 | 605-336-7600 | benderco.com

2025 Bender Companies. Information herein deemed reliable, but not guaranteed.

VIBORG SERVICE STATION



COMMERCIAL PROPERTY & BUSINESS

