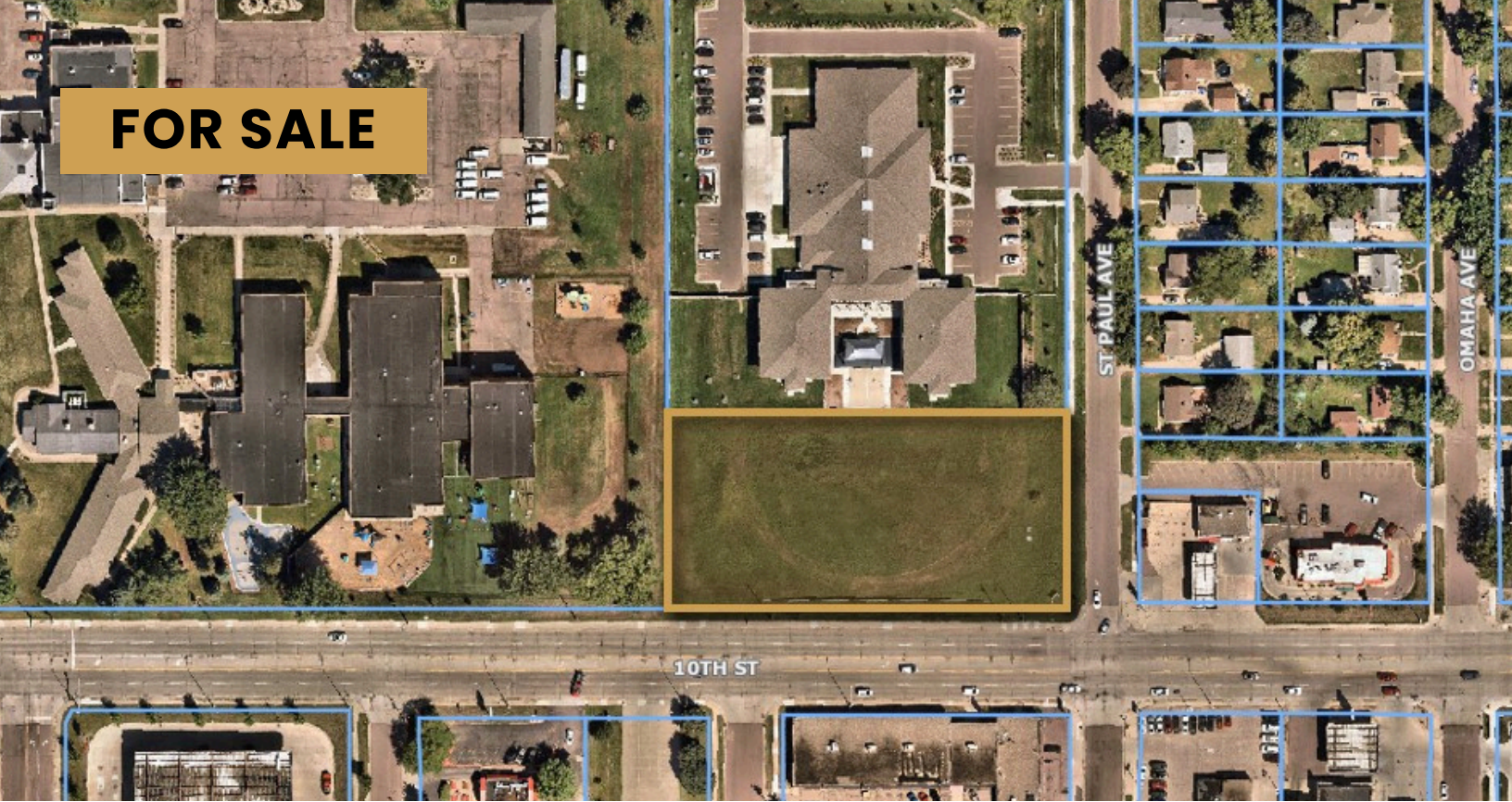


FOR SALE



EMPOWER CAMPUS LAND

INSTITUTIONAL LAND

Bender
COMMERCIAL



101 NORTH ST. PAUL AVE
SIOUX FALLS, SD



66,672 SF



\$8.50/SF

- Located on the corner of 10th Street and St. Paul Avenue
- Site reserved for non-profit delivery of services to the vulnerable population of Sioux Falls, including non-profit organizations and affordable housing.
- Site access off St. Paul Ave
- Zoned S-1 Institutional
- Highly visible with a daily traffic count of 19,800 vehicles

BOBBIE TIBBETTS | bobbie@benderco.com | 605-670-9455



Bender Commercial Real Estate Services | 305 West 57th Street | Sioux Falls, SD 57108 | 605-336-7600 | benderco.com

© 2025 Bender Companies. Information herein deemed reliable, but not guaranteed.

EMPOWER CAMPUS LAND



INSTITUTIONAL LAND FOR SALE



EMPOWER CAMPUS LAND



INSTITUTIONAL LAND FOR SALE

