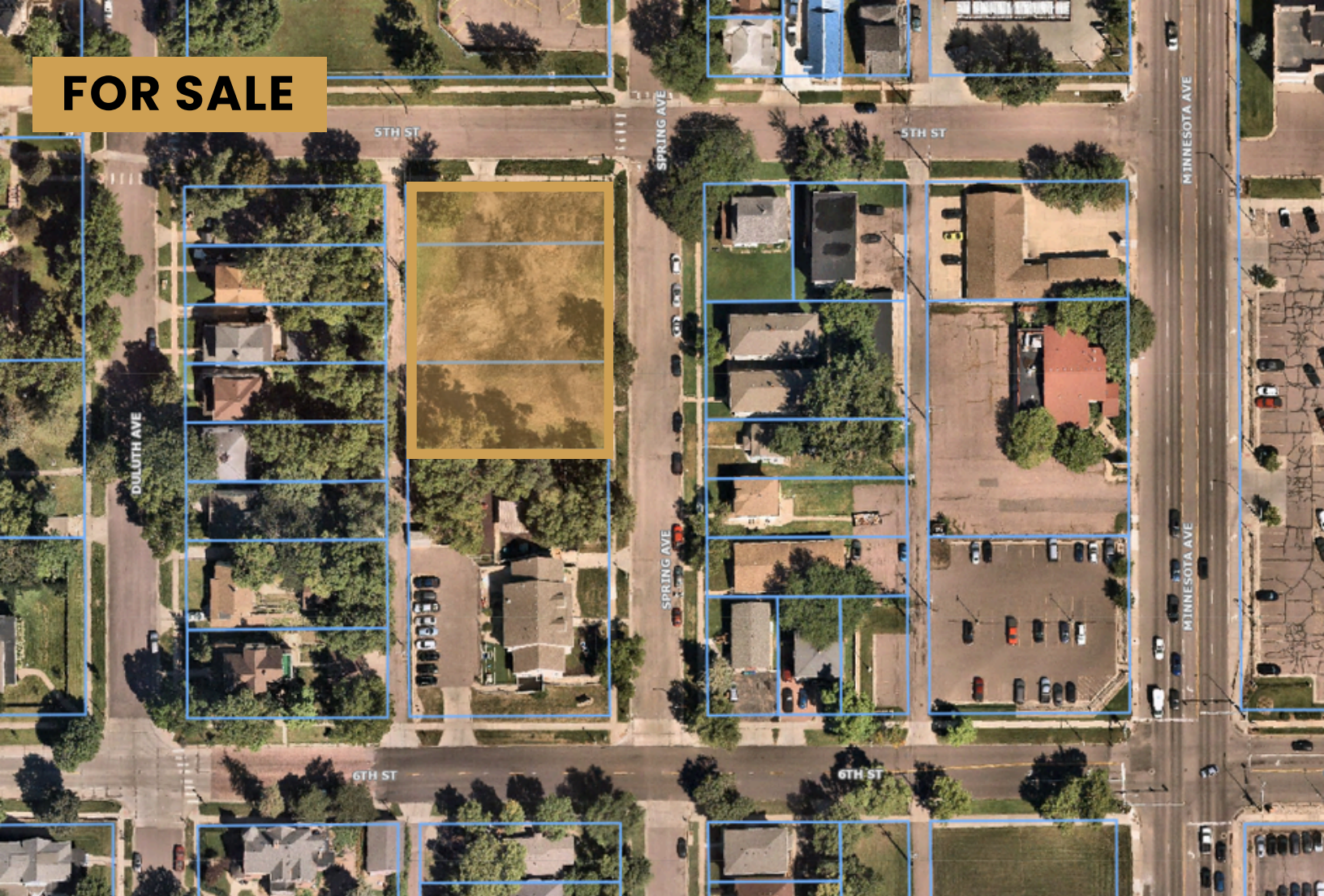


**FOR SALE**



# SPRING AVENUE DEVELOPMENT LAND

**Bender**  
COMMERCIAL



**421-435 N SPRING AVENUE  
SIOUX FALLS, SD**



**29,700 SF  
(0.68 AC)**



**\$356,400**

- Prime Development lots located on the corner of 5th Street and Spring Avenue in central Sioux Falls.
- Currently zoned RT-1 Residential.
- One block west of Minnehaha County Courthouse and County offices.
- Easy access to Minnesota Avenue and downtown Sioux Falls and its shopping, restaurants and recreational activities.

**NICK GUSTAFSON, CCIM** | [nick@benderco.com](mailto:nick@benderco.com) | 605-201-2809



Bender Commercial Real Estate Services | 305 West 57th Street | Sioux Falls, SD 57108 | 605-336-7600 | [benderco.com](http://benderco.com)

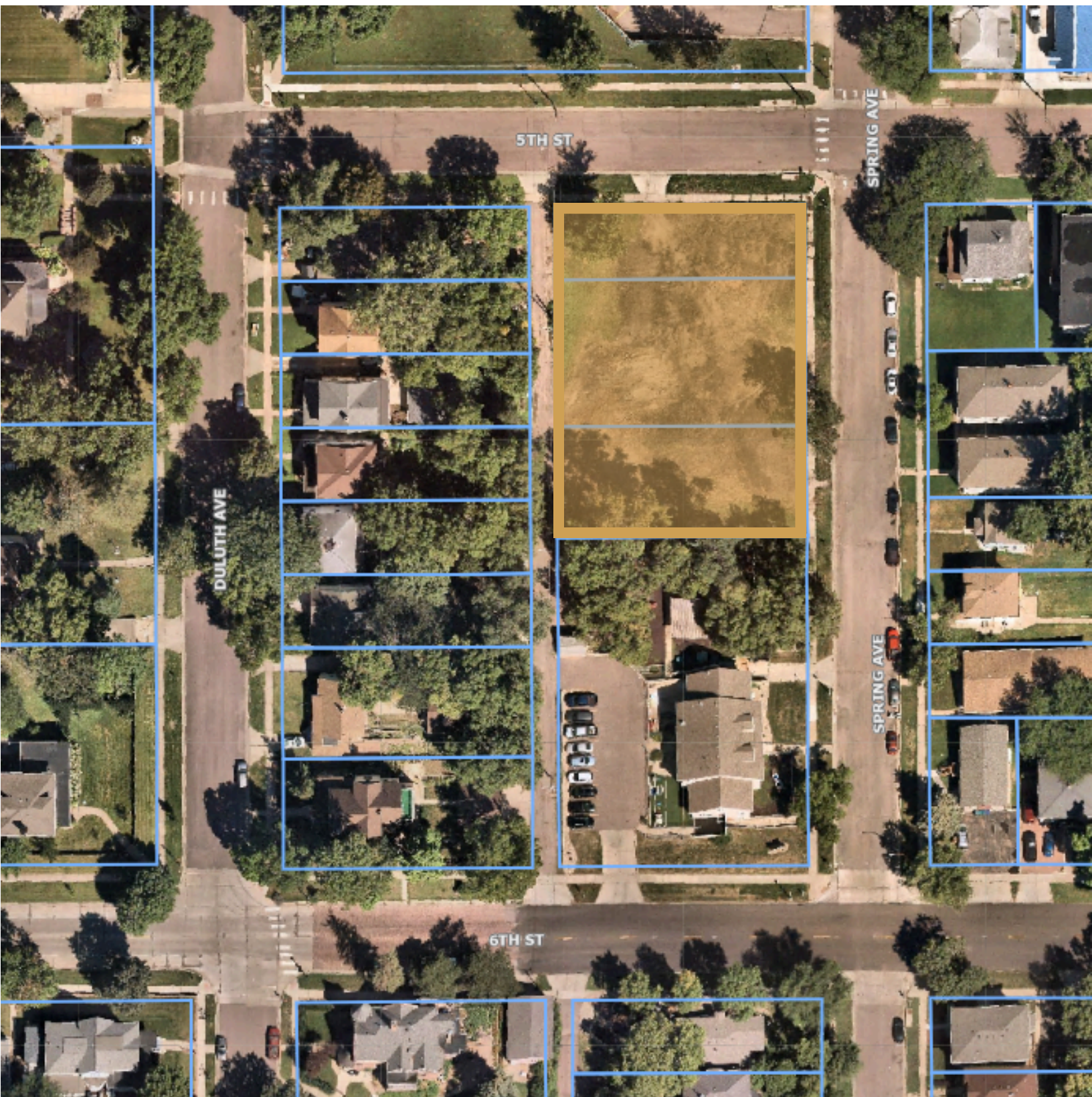
© 2025 Bender Companies. Information herein deemed reliable, but not guaranteed.



# SPRING AVE RESIDENTIAL LAND



## DEVELOPMENT LAND

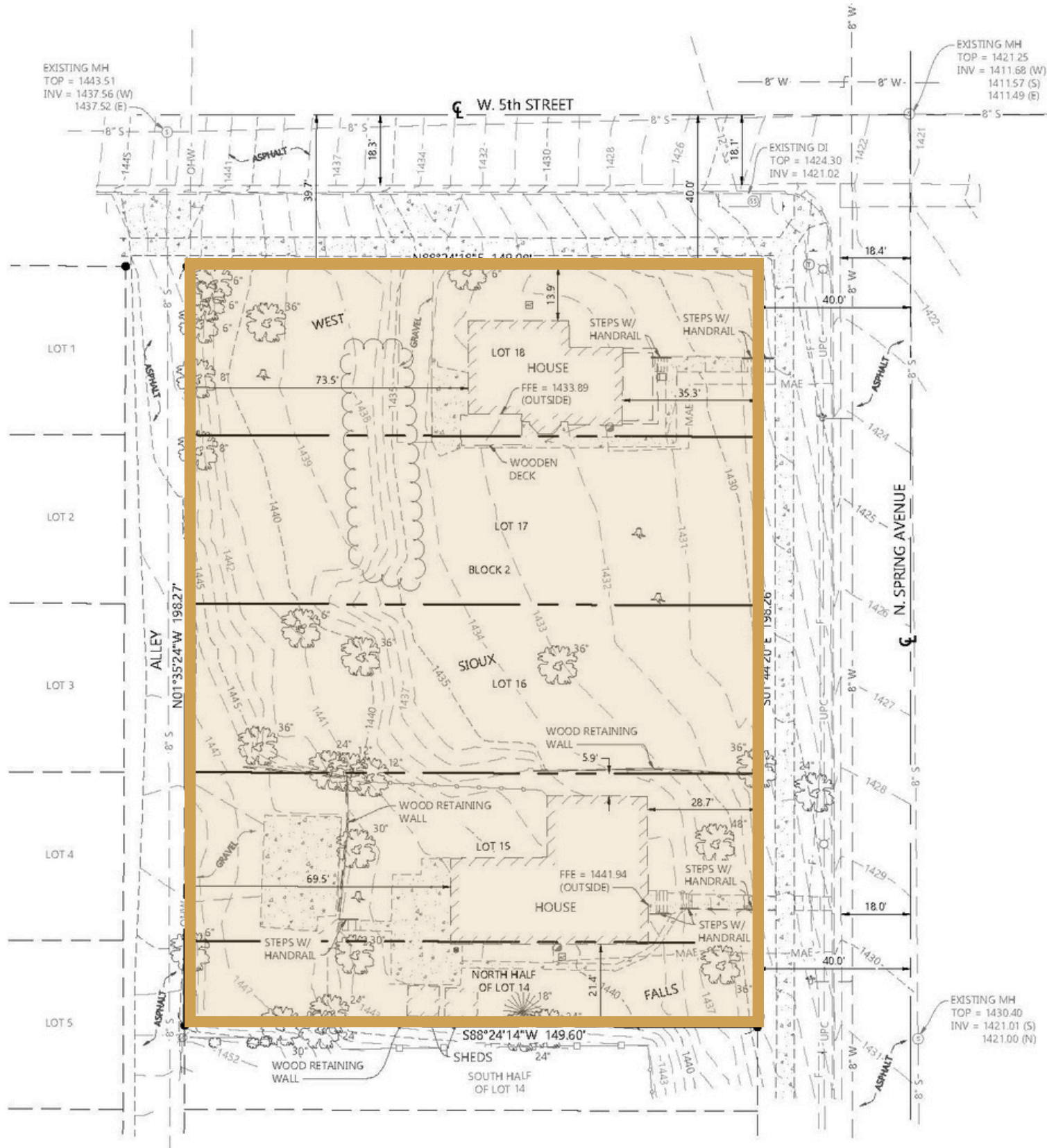




# SPRING AVE RESIDENTIAL LAND



## DEVELOPMENT LAND





# SPRING AVE RESIDENTIAL LAND



DEVELOPMENT LAND

