

FOR SUBLEASE



TRACT 121

RETAIL/OFFICE SPACE

Bender
COMMERCIAL



**121 SOUTH FRANKLIN AVENUE
SIOUX FALLS, SD**



4,847 SF



**\$22.00/SF NNN
EST NNNs: \$4.00/SF**

- Newly reclaimed retail space located in the East Bank sector near downtown Sioux Falls.
- Exposed brick, lots of windows, and overhead doors.
- Features open retail/office space with in-suite restrooms.
- On-site parking - 1:308 ratio.
- Building signage available.
- Great visibility with a daily traffic count of 10,900 vehicles.
- Neighboring businesses include Lockwood & Zahrbock Kool Law Office, Farmhouse Market, Formatop Company, McDonald's and Monick Yards.
- Potential to subdivide. Contact broker for details.

ISAAC JORGENSEN | isaac@benderco.com | 605-799-5058



Bender Commercial Real Estate Services | 305 West 57th Street | Sioux Falls, SD 57108 | 605-336-7600 | benderco.com

© 2025 Bender Companies. Information herein deemed reliable, but not guaranteed.

TRACT 121



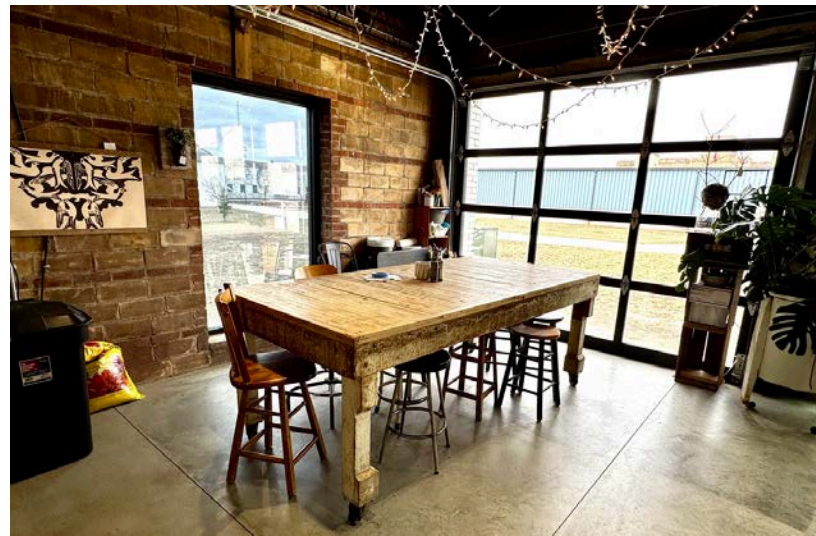
RETAIL/OFFICE SPACE FOR SUBLEASE



TRACT 121



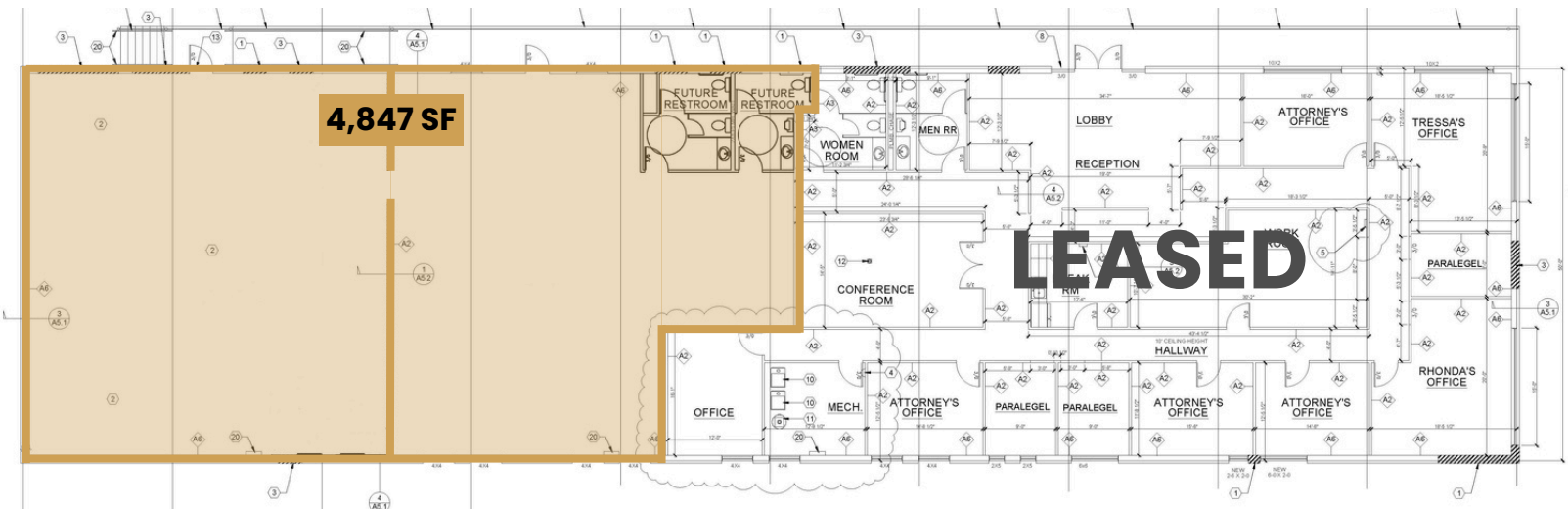
RETAIL/OFFICE SPACE FOR SUBLEASE



TRACT 121



RETAIL/OFFICE SPACE FOR SUBLEASE



TRACT 121



RETAIL/OFFICE SPACE FOR SUBLEASE

