

FOR LEASE



BRANDON 90 PLAZA

RETAIL SPACE

Bender
COMMERCIAL



**1313 - 1321 EAST ASH PLACE
BRANDON, SD**



**8,477 SF
SUBDIVIDABLE**



\$22.00 - \$24.00/SF NNN

- Newly constructed retail center located just off Splitrock Boulevard (Brandon's main retail thoroughfare) near I-90.
- Up to 8,477 SF available (minimum of 1,455 SF) - flexible layout to meet Tenant's needs.
- \$22.00/SF NNN for 3,000+ SF interior spaces; \$24.00/SF NNN for end-cap space.
- Tenant improvement negotiable.
- Building and monument signage available.
- Drive-thru opportunity.
- Easy access to Splitrock Boulevard and I-90.
- Jimmy John's located in the west unit.
- Neighboring businesses include Circle K, QuikTrip, McDonald's, Tailgator's, Quality Inn, Les Schwab Tires, and Luverne Truck Equipment.

BOBBIE TIBBETTS

bobbie@benderco.com
605-670-9455

ALEX SOUNDY, SIOR

alex@benderco.com
605-376-3700



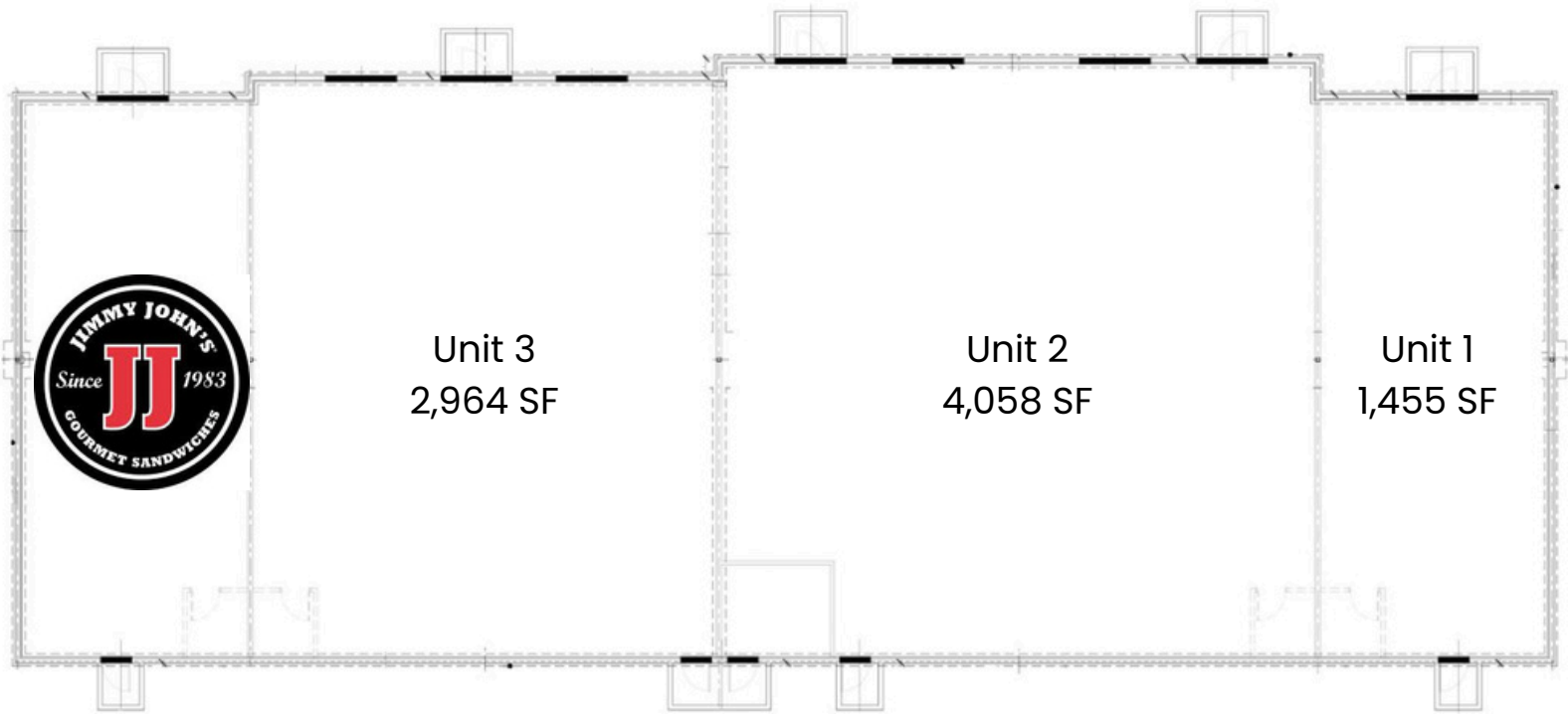
Bender Commercial Real Estate Services | 305 West 57th Street | Sioux Falls, SD 57108 | 605-336-7600 | benderco.com

© 2024 Bender Companies. Information herein deemed reliable, but not guaranteed.

BRANDON 90 PLAZA



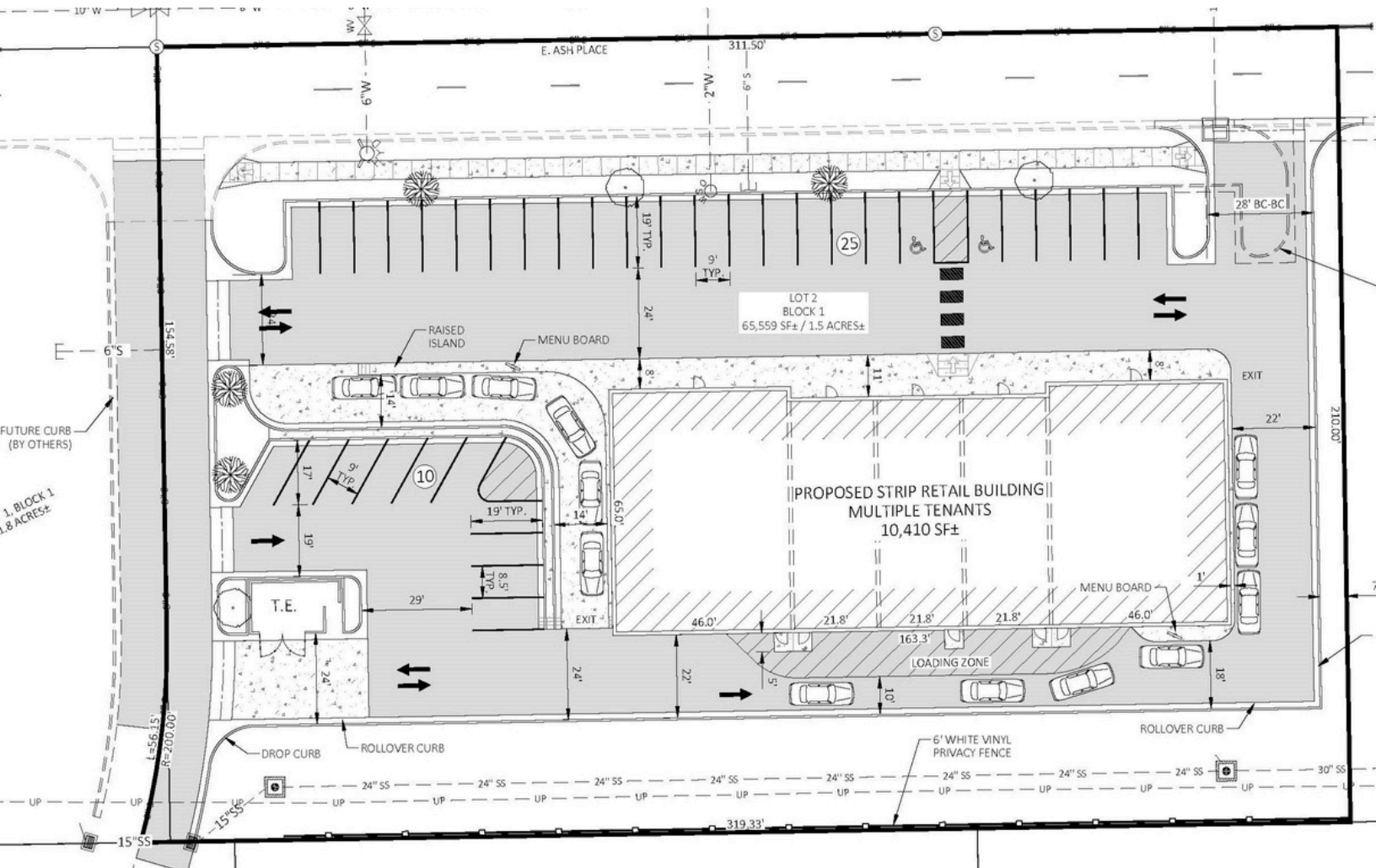
RETAIL SPACE FOR LEASE



BRANDON 90 PLAZA



RETAIL SPACE FOR LEASE



BRANDON 90 PLAZA



RETAIL SPACE FOR LEASE



BRANDON 90 PLAZA



RETAIL SPACE FOR LEASE

KEY FACTS

11,296

Population



Average
Household Size

36.0

Median Age

\$113,803

Median Household
Income

EDUCATION

1.2%

No High School
Diploma



21.9%

High School
Graduate



37.2%

Some College/
Associate's Degree



39.7%

Bachelor's/Grad/
Prof Degree

BUSINESS



320

Total Businesses



3,478

Total Employees

EMPLOYMENT



69.3%

White Collar



16.0%

Blue Collar



14.6%

Services

0.8%

Unemployment
Rate

INCOME



\$113,803

Median Household
Income



\$47,505

Per Capita Income



\$424,829

Median Net Worth

2024 Households by income (Esri)

The largest group: \$100,000 - \$149,999 (28.3%)

The smallest group: \$15,000 - \$24,999 (1.6%)

Indicator ▲	Value	Diff	
<\$15,000	2.1%	-5.0%	
\$15,000 - \$24,999	1.6%	-1.9%	
\$25,000 - \$34,999	3.0%	-3.8%	
\$35,000 - \$49,999	8.6%	-1.8%	
\$50,000 - \$74,999	12.7%	-7.3%	
\$75,000 - \$99,999	11.0%	-0.9%	
\$100,000 - \$149,999	28.3%	+6.8%	
\$150,000 - \$199,999	18.9%	+8.9%	
\$200,000+	13.8%	+5.0%	

Bars show deviation from Minnehaha County