

FOR LEASE



TEA QUONSET STORAGE

Bender
COMMERCIAL



**47065 271ST STREET
TEA, SD**



15,885 SF



**\$4.90/SF GROSS
PLUS UTILITIES**

- Heated storage/warehouse space located near Highway 106 (future Veterans Parkway) and I-29 Tea Exit.
- One (1) 12' overhead door.
- Insulated and heated.
- Secured key-pad entry.
- Additional outdoor storage available.
- Easy access to I-29 and Highway 106 (future Veterans Parkway).

REGGIE KUIPERS, SIOR | reggie@benderco.com | 605-496-2966



Bender Commercial Real Estate Services | 305 West 57th Street | Sioux Falls, SD 57108 | 605-336-7600 | benderco.com

© 2024 Bender Companies. Information herein deemed reliable, but not guaranteed.

TEA QUONSET STORAGE



HEATED WAREHOUSE SPACE



TEA QUONSET STORAGE



HEATED WAREHOUSE SPACE



TEA QUONSET STORAGE



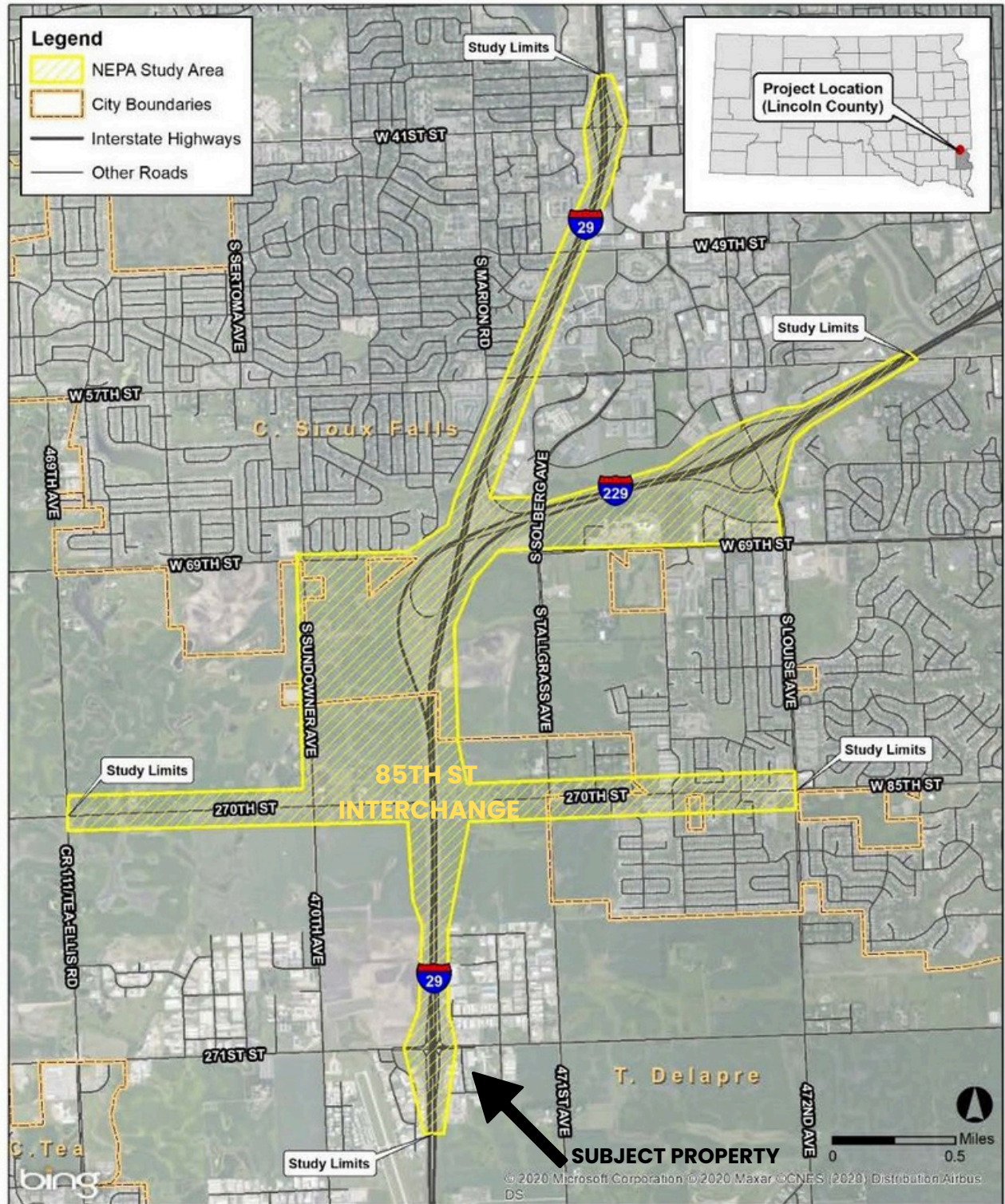
SOUTH VETERANS PARKWAY



TEA QUONSET STORAGE



FUTURE 85TH STREET OVERPASS - COMING 2025



401 East 8th Street
Suite 309
Sioux Falls, SD 57103
(605) 330-7000

Print Date: 12/2/2020
Source: Bing Maps.
Map by: mfallk
Projection: State Plane
South Dakota S

Project Location Map
I-29 and 85th Street Interchange
Lincoln County, SD

TEA QUONSET STORAGE



HEATED WAREHOUSE SPACE

