

FOR LEASE



BROOKSIDE PROFESSIONAL BLDG

OFFICE/MEDICAL SPACE

Bender
COMMERCIAL



**7600 SOUTH BROOKSIDE CIRCLE
SIOUX FALLS, SD**



**265 USF TO
7,920 USF**



\$24.50/SF NNN

- Upper level office space located in the newly constructed Dakota Dental Building in south Sioux Falls.
- Flexible floorplan to accommodate tenant needs.
- Parking ratio of 1 space per 211 SF. Monument signage available.
- Geothermal HVAC system resulting in 20% lower utility costs.
- \$25.00/SF TI Allowance for office or clinic space.
- Easy access to 85th Street and Minnesota Avenue.
- Great visibility along South Veterans Parkway (SD Highway 100).
- Neighboring businesses include Sioux Falls Urgent Care, Soo Sports, Dollar Tree, Walmart, Burger King, McDonald's, Schulte Subaru and Aldi.

ROB FAGNAN, SIOR | rob@benderco.com | 605-521-5444



Bender Commercial Real Estate Services | 305 West 57th Street, Sioux Falls, SD 57108 | 605-336-7600 | benderco.com

© 2025 Bender Companies. Information herein deemed reliable, but not guaranteed.

BROOKSIDE PROFESSIONAL BLDG



OFFICE/MEDICAL SPACE FOR LEASE



Bender Commercial Real Estate Services | 305 West 57th Street, Sioux Falls, SD 57108 | 605-336-7600 | benderco.com

© 2025 Bender Companies. Information herein deemed reliable, but not guaranteed.

BROOKSIDE PROFESSIONAL BLDG



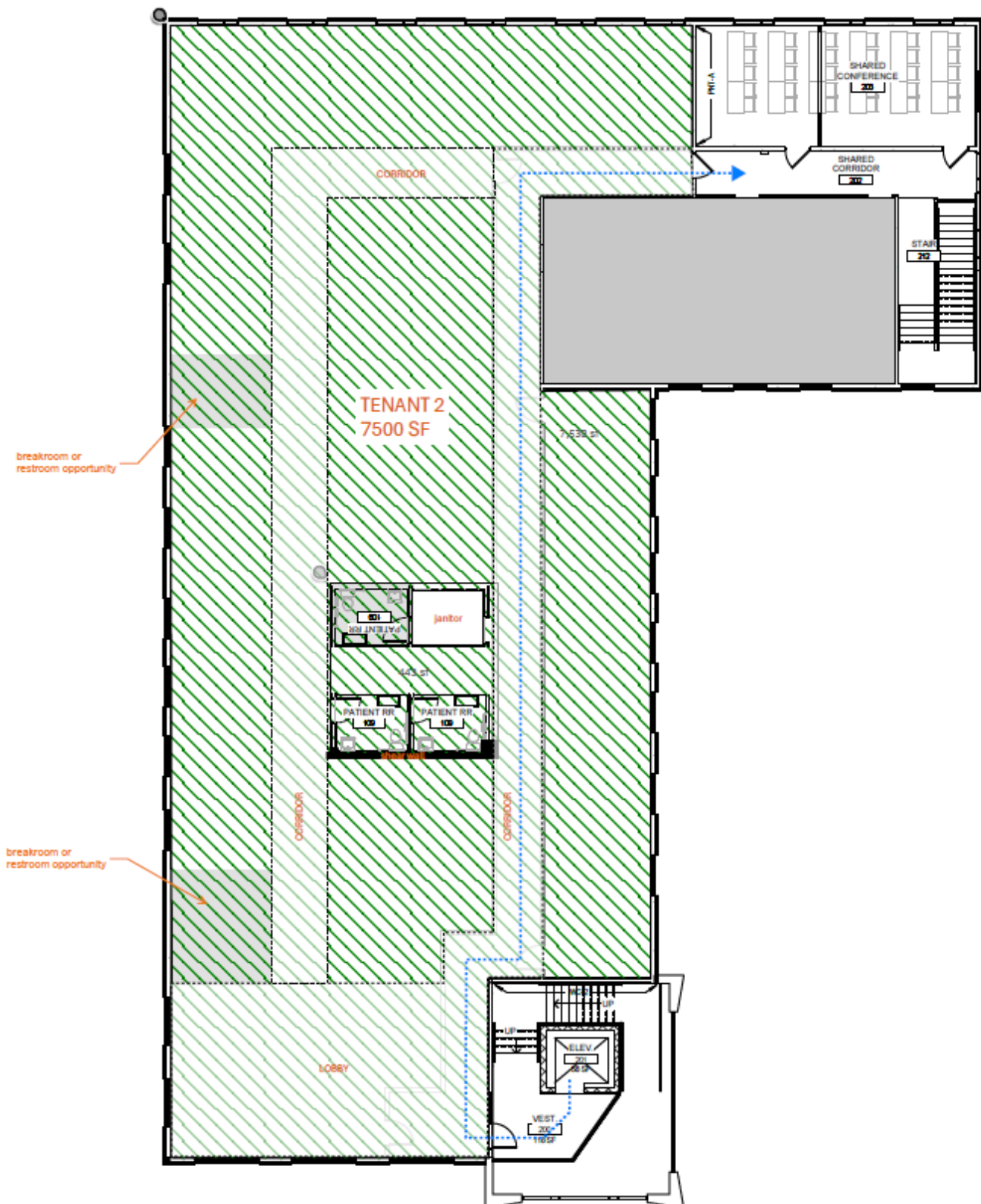
OFFICE/MEDICAL SPACE FOR LEASE



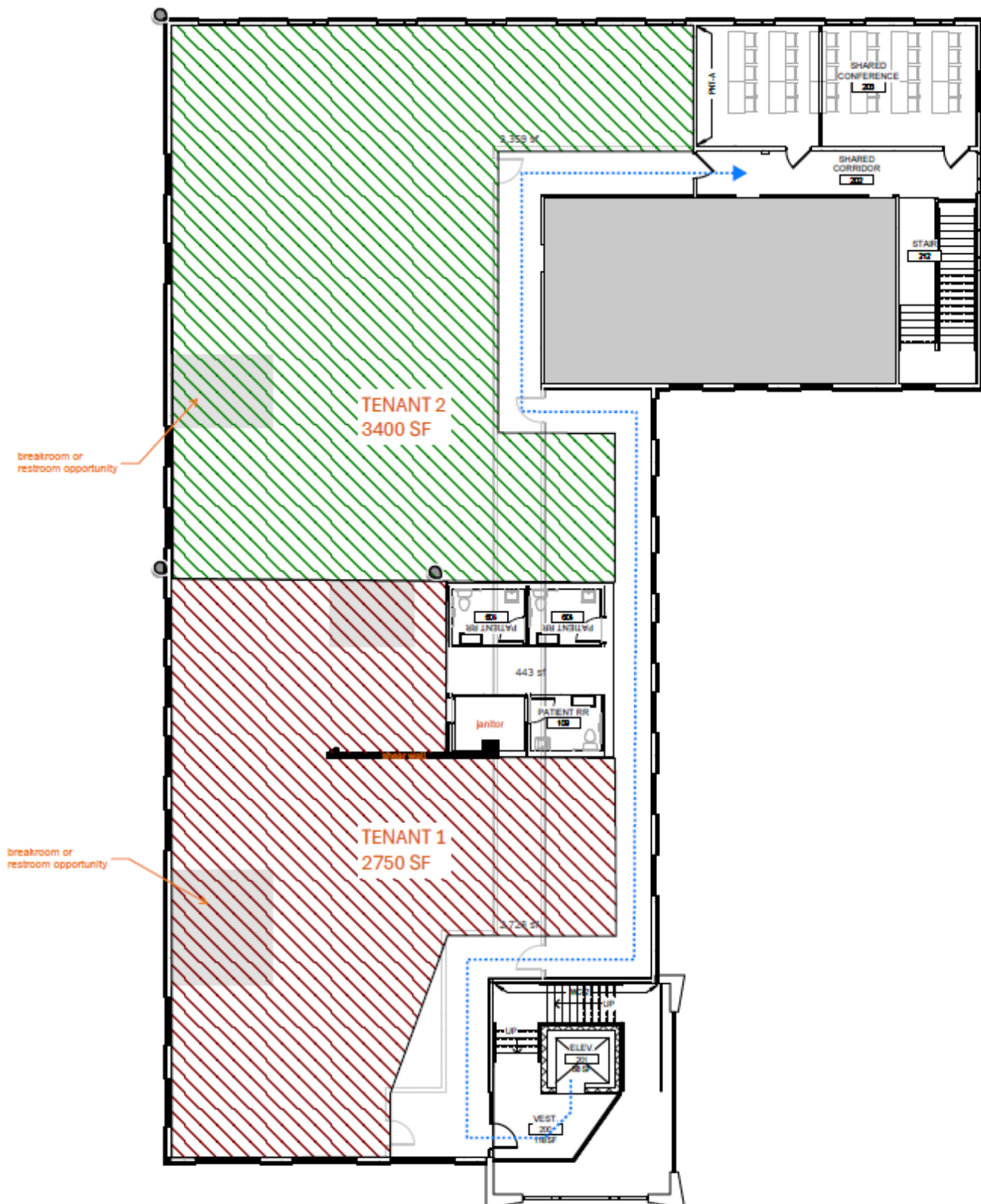
Bender Commercial Real Estate Services | 305 West 57th Street, Sioux Falls, SD 57108 | 605-336-7600 | benderco.com

2025 Bender Companies. Information herein deemed reliable, but not guaranteed.

SINGLE TENANT OPTION



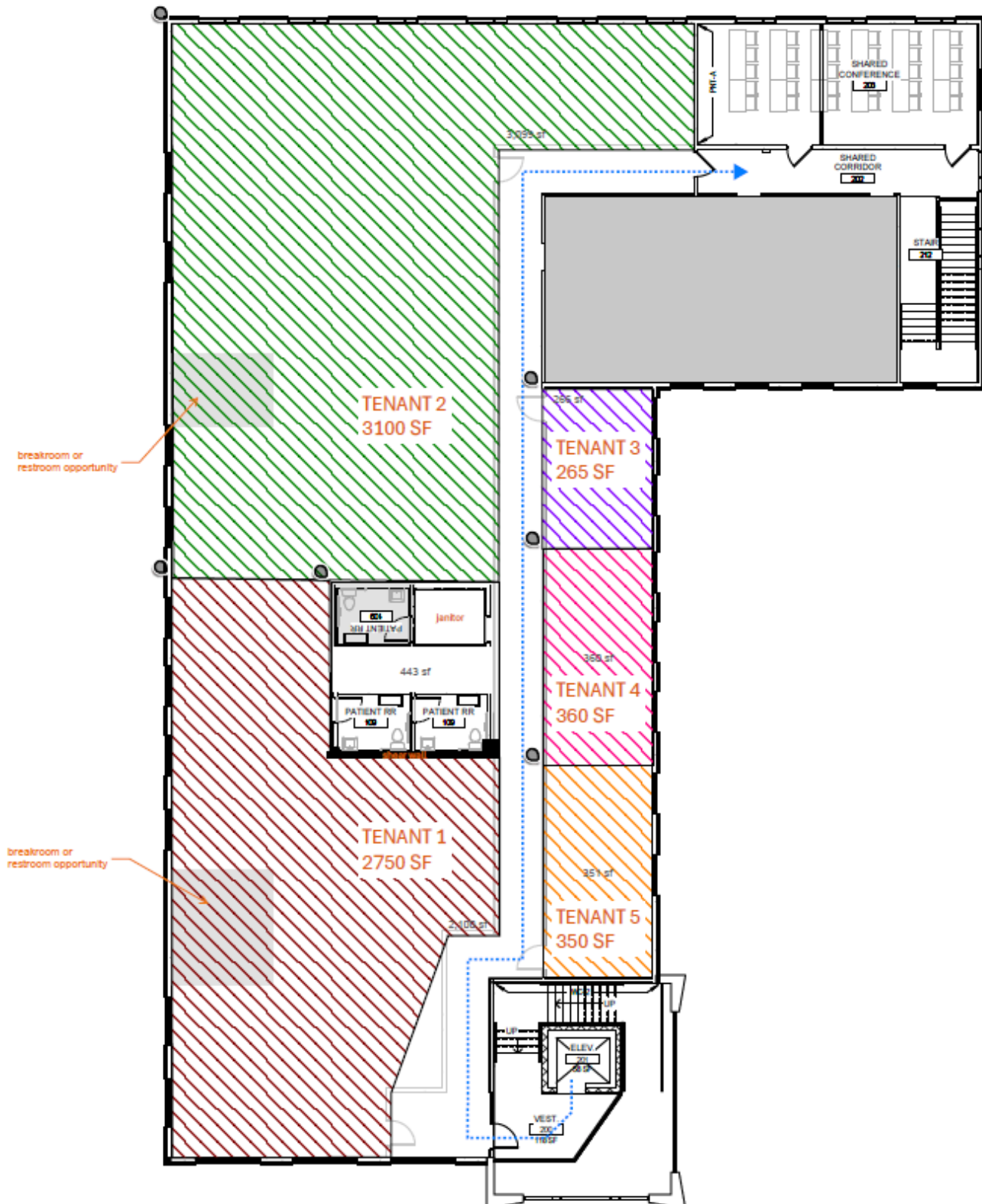
TWO TENANT OPTION



BROOKSIDE PROFESSIONAL BLDG



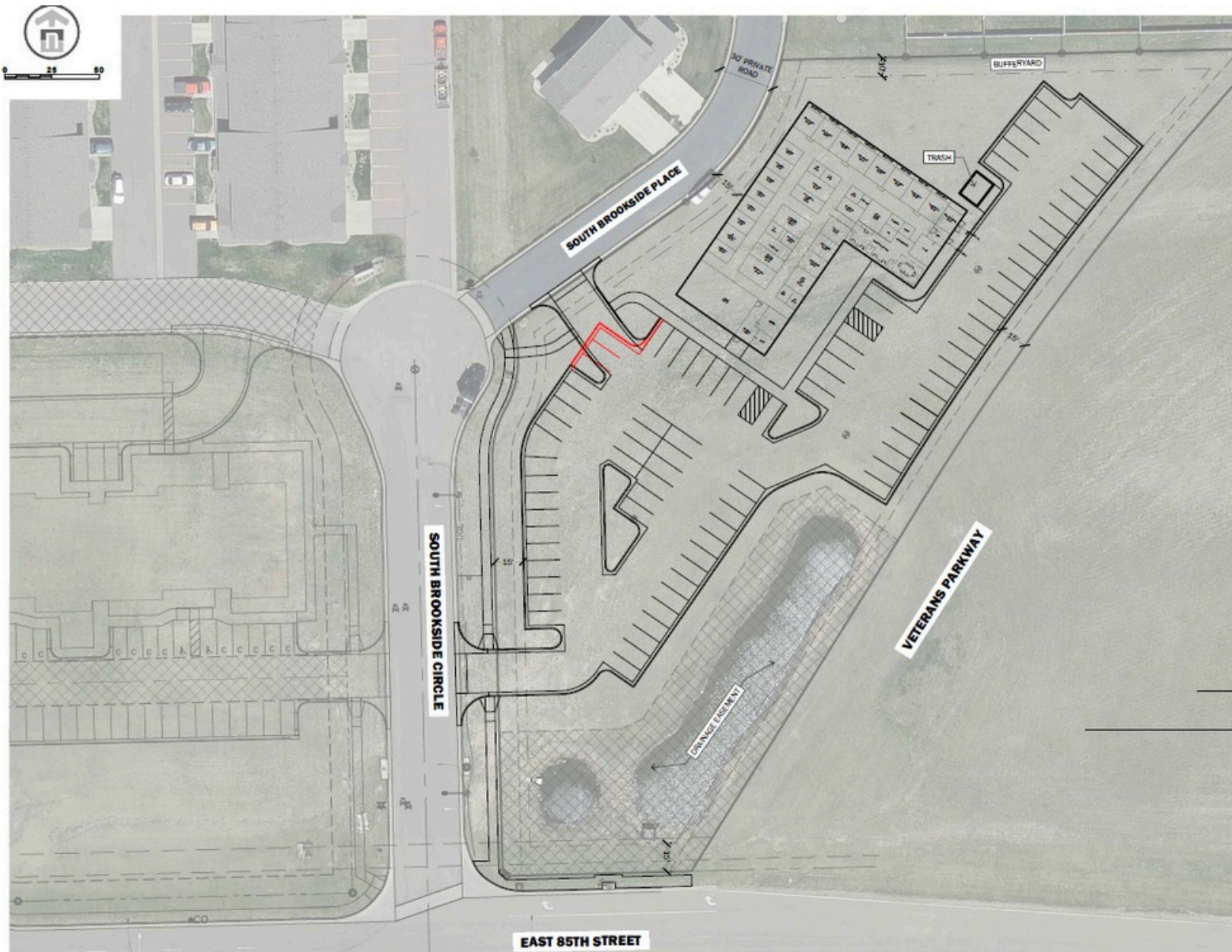
MIXED SIZE MULTI-TENANT OPTION



BROOKSIDE PROFESSIONAL BLDG



OFFICE/MEDICAL SPACE FOR LEASE



BROOKSIDE PROFESSIONAL BLDG



OFFICE/MEDICAL SPACE FOR LEASE

