

FOR SALE



69TH STREET COMMERCIAL LAND

Bender
COMMERCIAL



**6101 SOUTH MAPLE ROCK TRAIL
SIOUX FALLS, SD**



2.37 ACRES



\$14.00/SF

- Commercial zoned (C-2) land located on the corner of 69th Street and Maple Rock Trail.
- Access from to-be-built private street.
- Great visibility along 69th Street.
- Neighboring businesses include Great Life, Southeastern Dental, Alpine Companies, Joshua Homes, Harrisburg Horizon Elementary and East Middle School, Sioux Falls Christian School and Wings Gymnastics.
- Easy access to future South Veterans Parkway (SD Highway 100).
- Covenant and restrictions apply - contact broker for details.

ALEX SOUNDY, CCIM, SIOR

alex@benderco.com

605-376-3700

REGGIE KUIPERS, SIOR

reggie@benderco.com

605-496-2966



Bender Commercial Real Estate Services | 305 West 57th Street | Sioux Falls, SD 57108 | 605-336-7600 | benderco.com

© 2026 Bender Companies. Information herein deemed reliable, but not guaranteed.

69TH STREET COMMERCIAL LAND



COMMERCIAL LAND FOR SALE



69TH STREET COMMERCIAL LAND



COMMERCIAL LAND FOR SALE



69TH STREET COMMERCIAL LAND



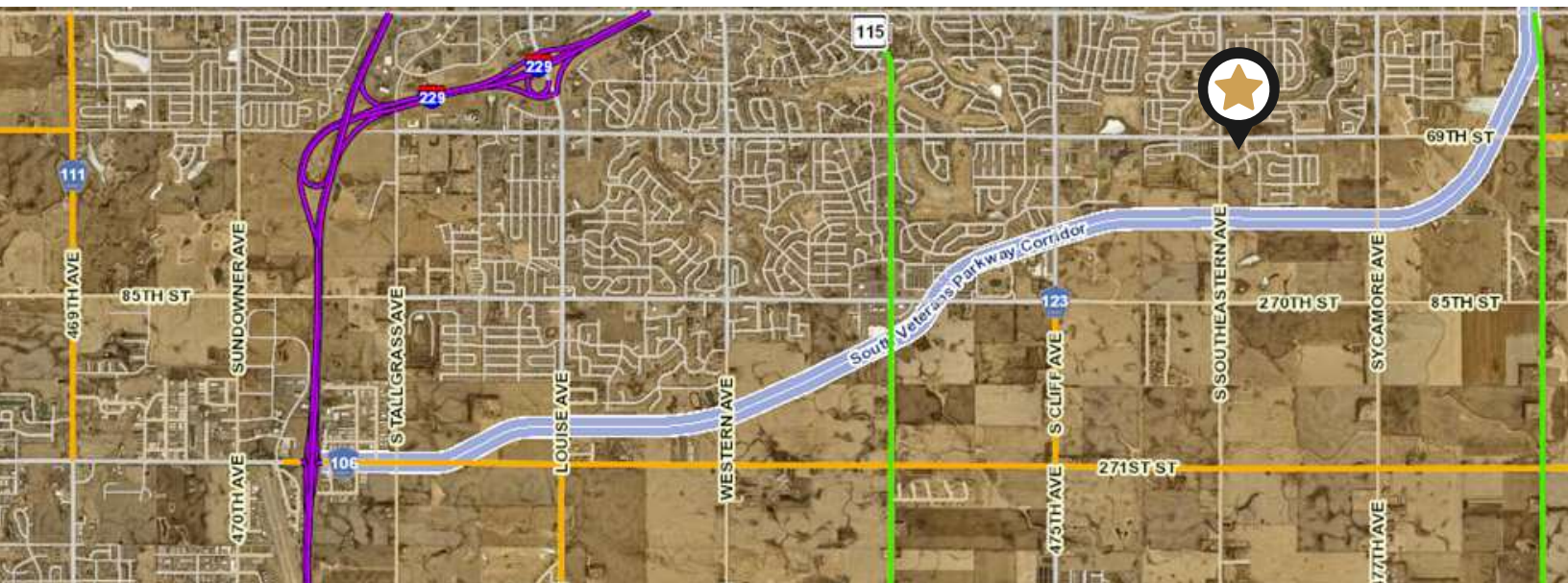
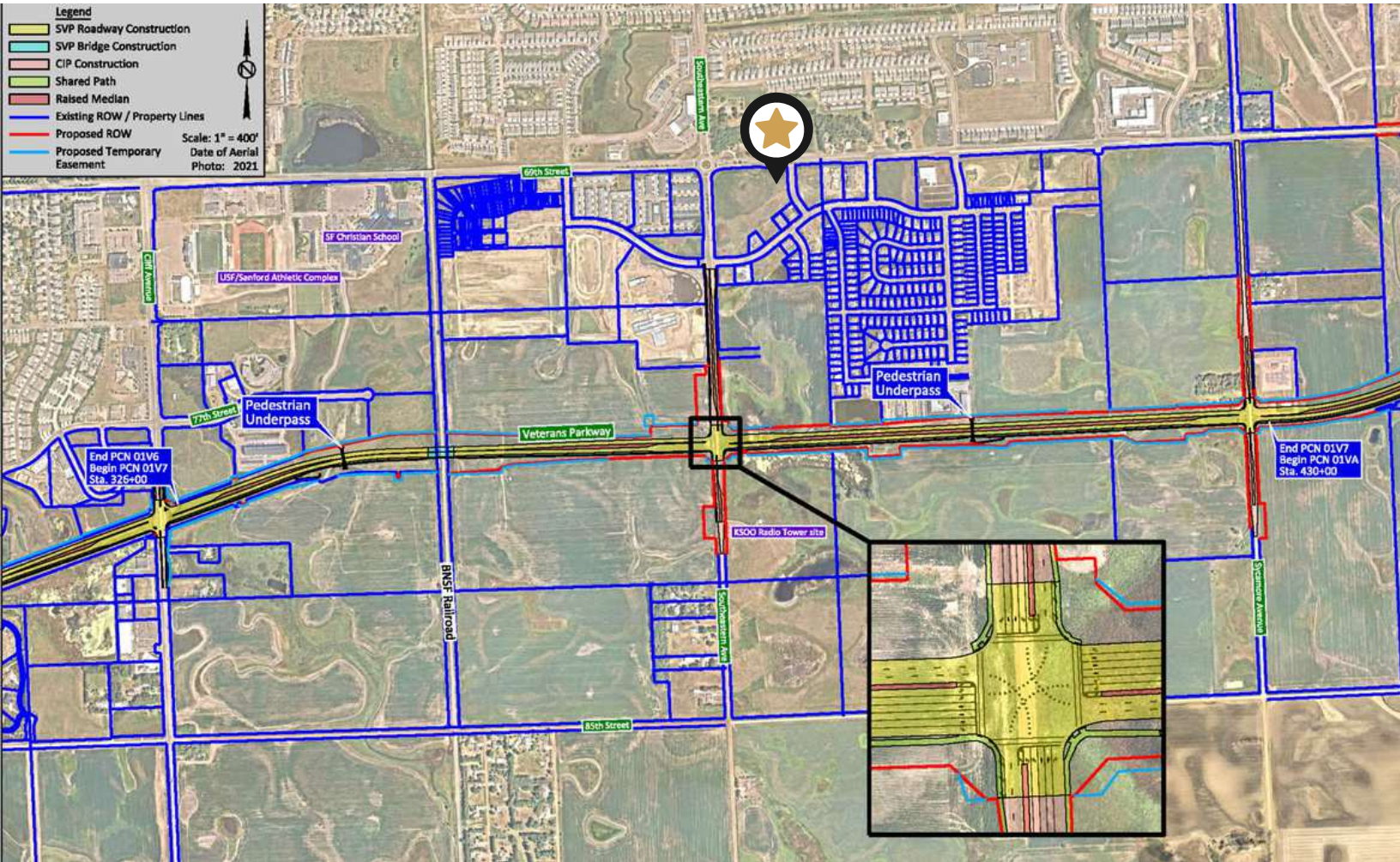
COMMERCIAL LAND FOR SALE



69TH STREET COMMERCIAL LAND



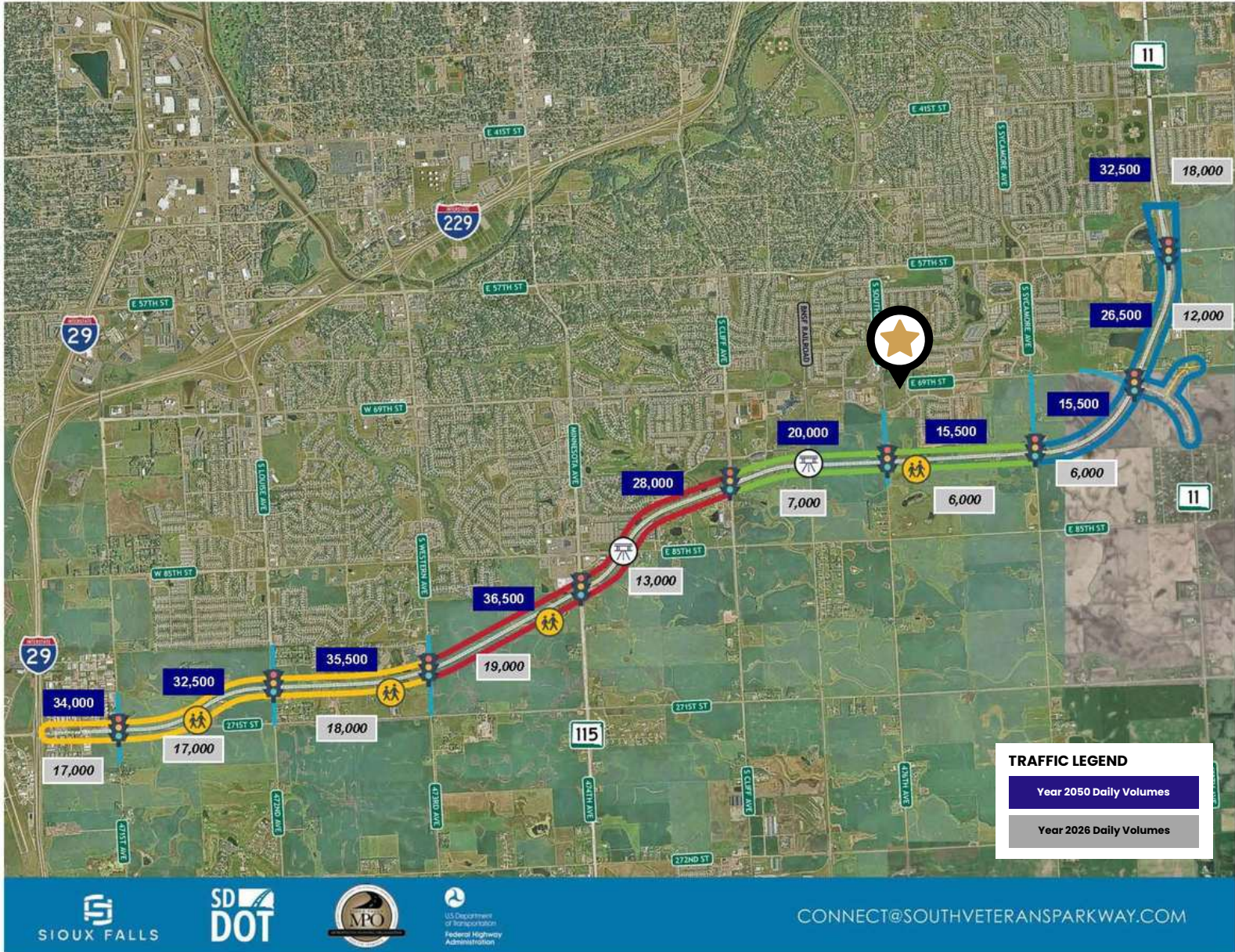
SOUTH VETERANS PARKWAY PLANS



69TH STREET COMMERCIAL LAND



COMMERCIAL LAND FOR SALE



CONNECT@SOUTHVETERANSPARKWAY.COM

69TH STREET COMMERCIAL LAND



COMMERCIAL LAND FOR SALE

