

FOR LEASE



RUSHMORE PLAZA

RETAIL/OFFICE SPACE

Bender
COMMERCIAL



**1308 E. RUSHMORE DRIVE, SUITE 2
BRANDON, SD**



450 SF



\$800/MO GROSS

- Retail/Office space located adjacent to the Brandon Steakhouse along Splitrock Boulevard, Brandon's main thoroughfare.
- Open retail space with private office/storage room.
- In-suite restroom.
- Great visibility to Splitrock Boulevard with a daily traffic count of 9,792 vehicles.
- Neighboring businesses also include 9999 Boba, Sturdevant's Auto, Pizza Ranch, Dairy Queen, Brandon Valley High School, First National Bank in Sioux Falls, and Ace Hardware.

ISAAC JORGENSEN

isaac@benderco.com
605-799-5058

ROB FAGNAN, SIOR

rob@benderco.com
605-521-5444



Bender Commercial Real Estate Services | 305 West 57th Street | Sioux Falls, SD 57108 | 605-336-7600 | benderco.com

© 2024 Bender Companies. Information herein deemed reliable, but not guaranteed.

RUSHMORE RETAIL/OFFICE SPACE



RETAIL/OFFICE SPACE FOR LEASE



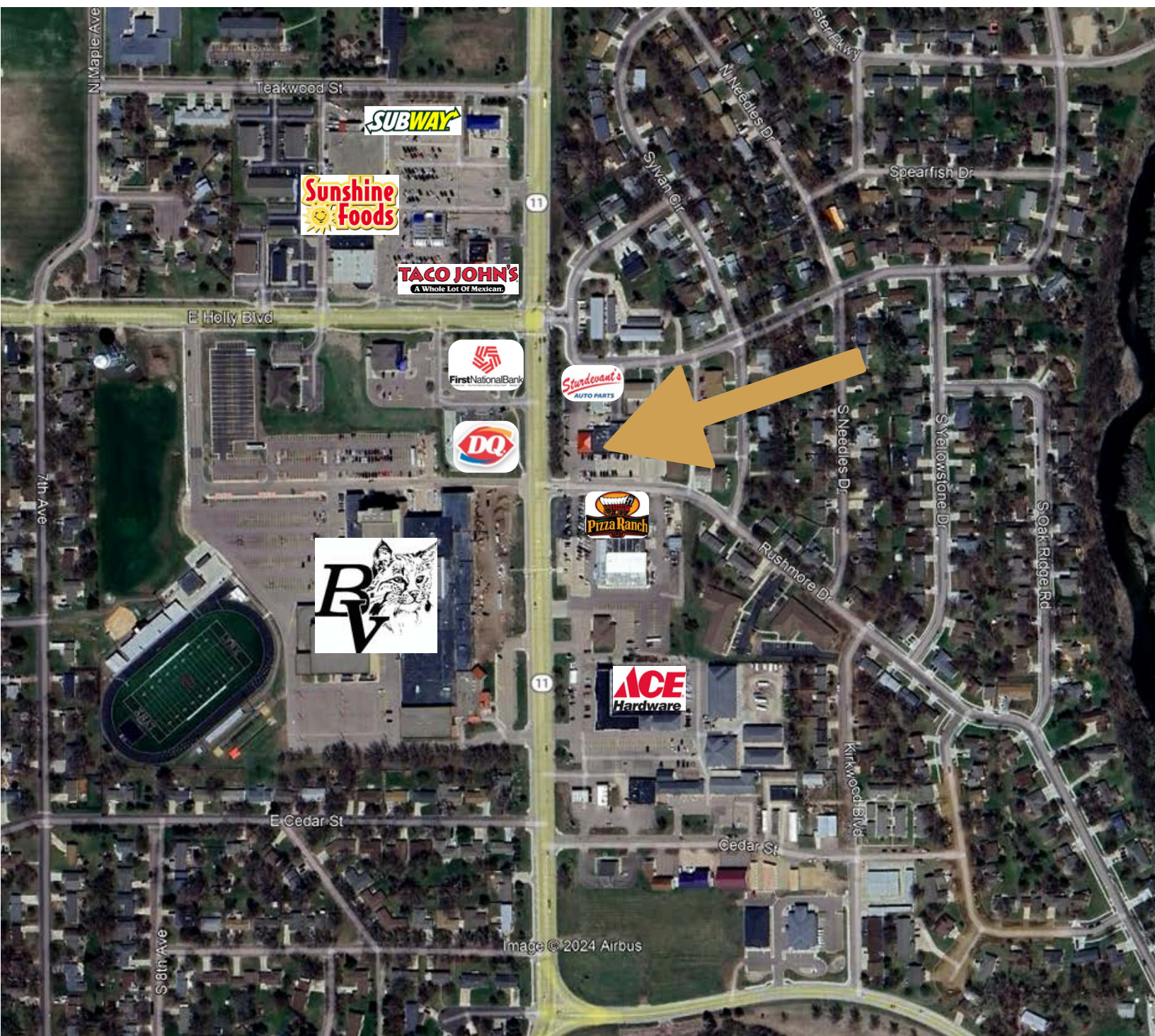
Bender Commercial Real Estate Services | 305 West 57th Street | Sioux Falls, SD 57108 | 605-336-7600 | benderco.com

2024 Bender Companies. Information herein deemed reliable, but not guaranteed.

RUSHMORE RETAIL/OFFICE SPACE



RETAIL/OFFICE SPACE FOR LEASE



RUSHMORE RETAIL/OFFICE SPACE



RETAIL/OFFICE SPACE FOR LEASE

