




**FOR LEASE**



# COPPER CREEK OFFICE SPACE

## OFFICE SPACE

**Bender**  
COMMERCIAL

 **6201 EAST SILVER MAPLE CIR, SUITE 200**  
**SIOUX FALLS, SD**  **1,880 RSF**  **\$15.50/SF NNN**

- Garden level office space in the Copper Creek Office Park near 26th Street and South Veteran's Parkway (SD 100).
- Space is currently configured with a reception area, five (5) private offices, conference room and breakroom. Flexible layout with Smartt Interior Construction walls.
- Common area restrooms.
- Parking ratio of 1 space per 254 square feet.
- Exterior entrance into space.
- Occupancy September 1, 2024.
- Located near Dawley Farm Village with neighboring businesses such as First Dakota National Bank, Avera Health, Caribu Coffee, Caseys, Target, Century Theatres and Subway.

**ALEX SOUNDY, SIOR** | [alex@benderco.com](mailto:alex@benderco.com) | 605-376-3700



Bender Commercial Real Estate Services | 305 West 57th Street | Sioux Falls, SD 57108 | 605-336-7600 | [benderco.com](http://benderco.com)

© 2024 Bender Companies. Information herein deemed reliable, but not guaranteed.



# COPPER CREEK OFFICE SPACE



## OFFICE SPACE FOR LEASE

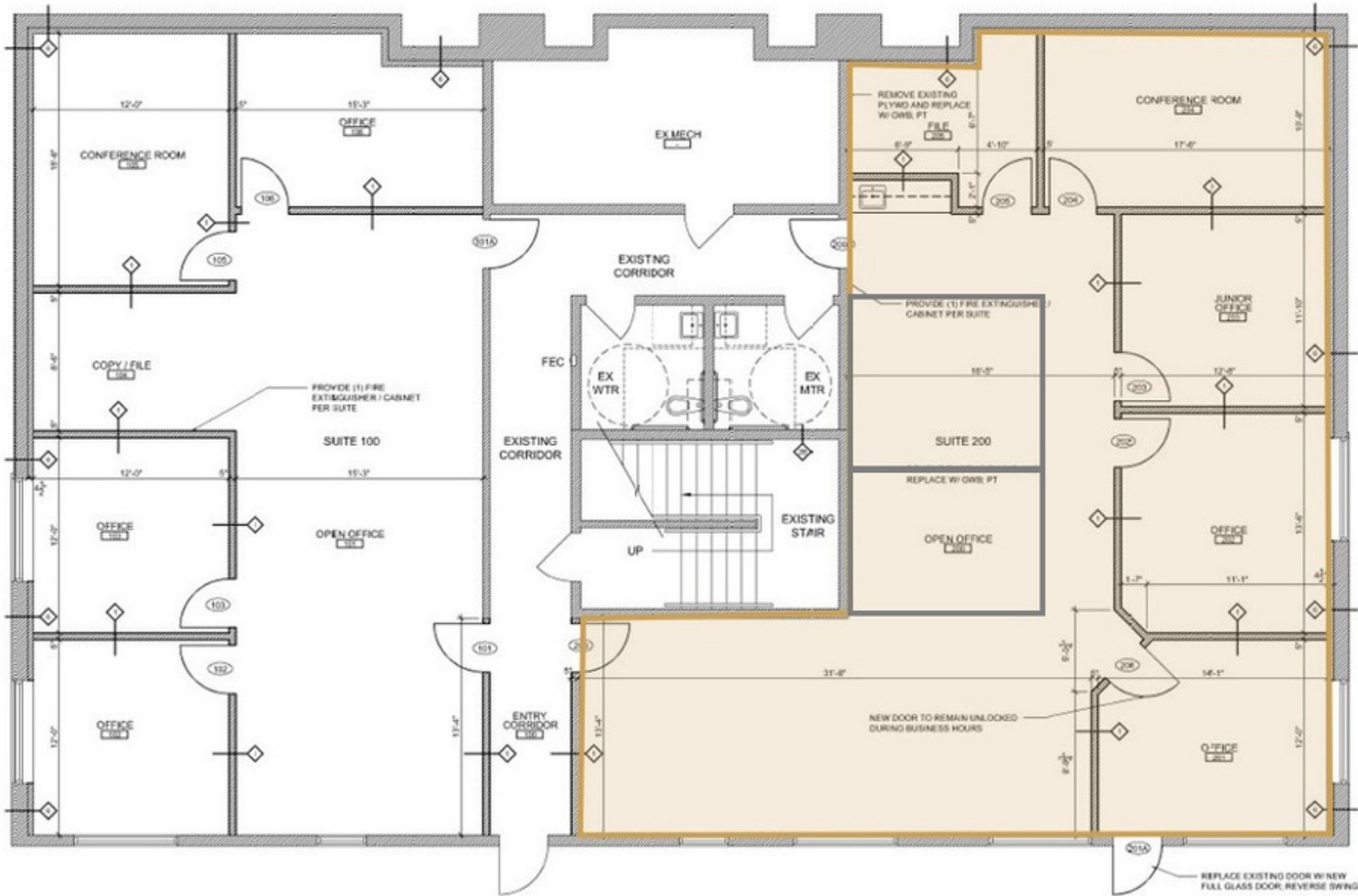




# COPPER CREEK OFFICE SPACE



## OFFICE SPACE FOR LEASE



Bender Commercial Real Estate Services | 305 West 57th Street | Sioux Falls, SD 57108 | 605-336-7600 | benderco.com

2023 Bender Companies. Information herein deemed reliable, but not guaranteed.



# COPPER CREEK OFFICE SPACE



OFFICE SPACE FOR LEASE

