

**FOR LEASE**



# COPPER CREEK OFFICE SPACE

## OFFICE SPACE

**Bender**  
COMMERCIAL



**6209 E. SILVER MAPLE CIR, SUITE 3  
SIOUX FALLS, SD**



**1,892 RSF**



**\$15.50/SF NNN  
EST. NNNs: \$5.31/SF**

- Garden level office space in the Copper Creek Office Park near 26th Street and South Veteran's Parkway (SD 100).
- Space has reception/waiting area, two (2) private offices, conference room, kitchenette, in-suite restroom and open work space.
- Parking ratio of 1 space per 216 square feet.
- Exterior entrance into space with exterior building signage.
- Located near Dawley Farm Village with neighboring businesses such as First Dakota National Bank, Avera Health, Caribou Coffee, Casey's, Target, Century Theatres and Subway.

**ALEX SOUNDY, SIOR** | [alex@benderco.com](mailto:alex@benderco.com) | 605-376-3700



Bender Commercial Real Estate Services | 305 West 57th Street | Sioux Falls, SD 57108 | 605-336-7600 | [benderco.com](http://benderco.com)

© 2024 Bender Companies. Information herein deemed reliable, but not guaranteed.

# COPPER CREEK OFFICE SPACE



## OFFICE SPACE FOR LEASE

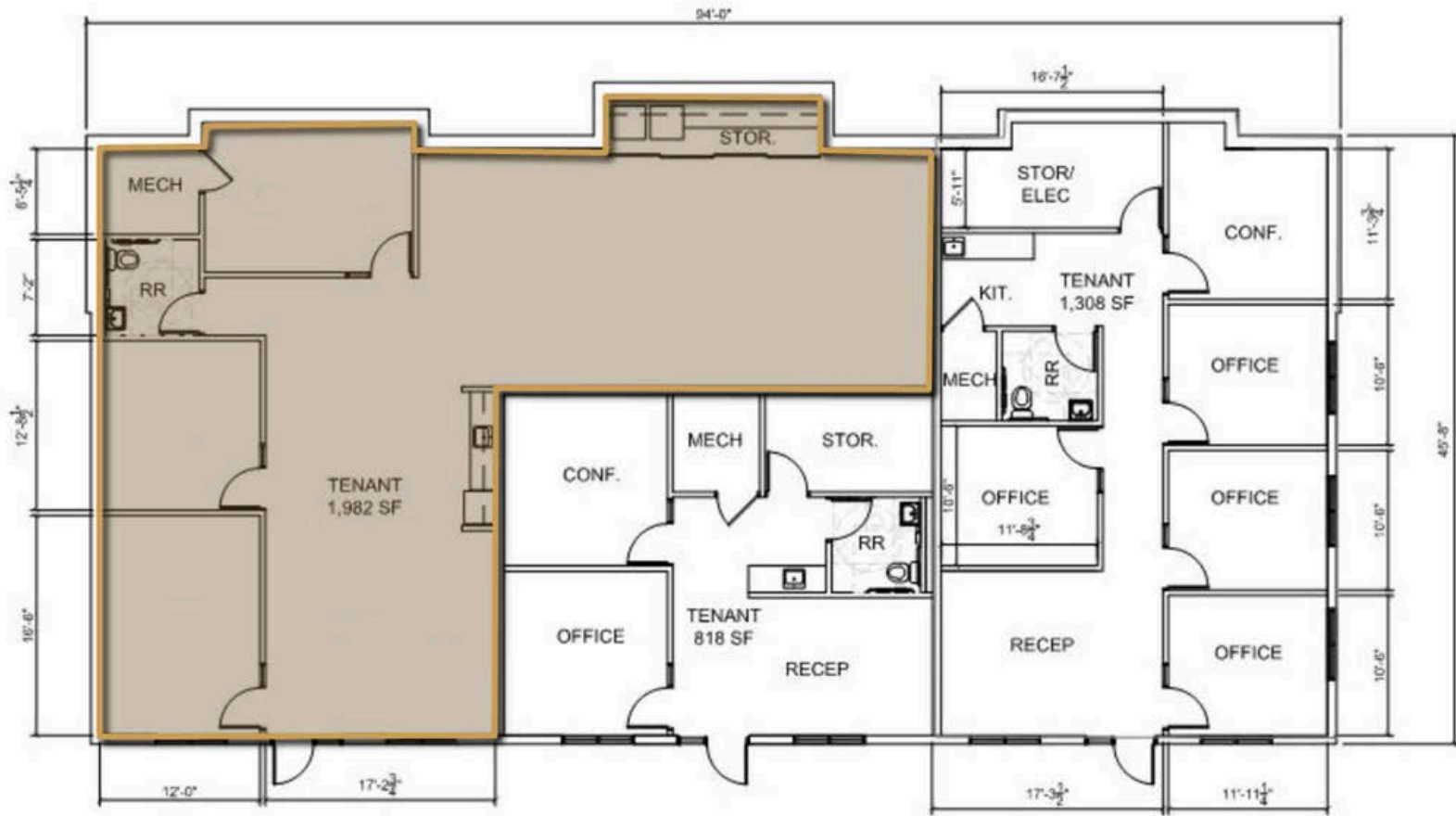




# COPPER CREEK OFFICE SPACE



## OFFICE SPACE FOR LEASE





# COPPER CREEK OFFICE SPACE



## OFFICE SPACE FOR LEASE

