

FOR LEASE



ROSA PARKS PLACE OFFICE

OFFICE SPACE

Bender
COMMERCIAL

 **5001 EAST ROSA PARKS PLACE**
SIoux FALLS, SD  **5,506 SF**
SUBDIVIDABLE **\$ \$22.00/SF NNN**
EST NNN: \$4.80/SF

- To be constructed office space located near South Veterans Parkway (SD 100) along East 26th Street.
- Space can be leased as a single tenant or subdivided - minimum of 2,753 SF.
- Reception area, private offices, conference room(s) and restrooms.
- Great signage along high visibility East 26th Street with a daily traffic count of 16,400 vehicles.
- Parking ratio of 1:162.
- Convenient location with easy access to shopping and restaurants.
- Property also available for sale - contact broker for more information.

BOBBIE TIBBETTS | bobbie@benderco.com | 605-670-9455



Bender Commercial Real Estate Services | 305 West 57th Street | Sioux Falls, SD 57108 | 605-336-7600 | benderco.com

© 2026 Bender Companies. Information herein deemed reliable, but not guaranteed.

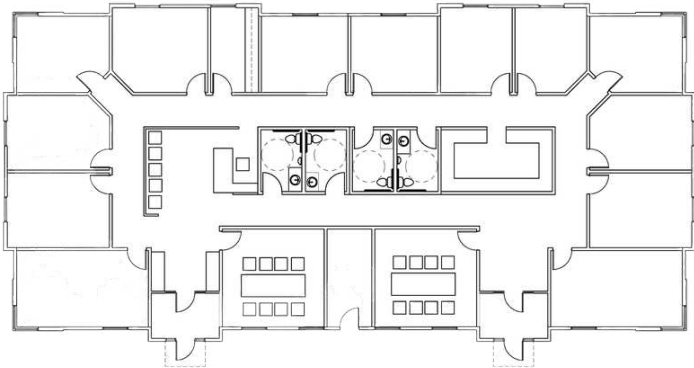
ROSA PARKS PLACE OFFICE



OFFICE SPACE FOR LEASE

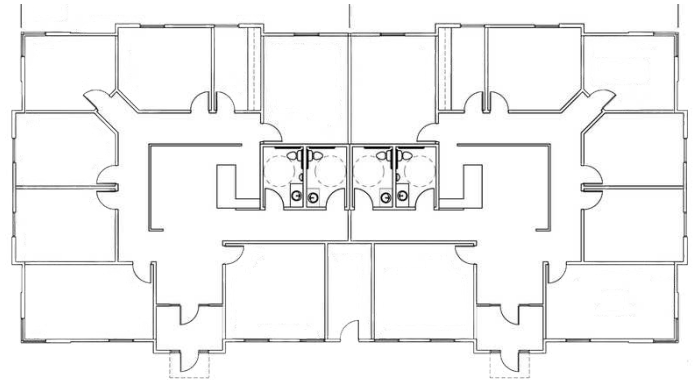
FLOOR PLAN 1 TENANT

**Conceptual drawings only*



FLOOR PLAN 2 TENANTS

**Conceptual drawings only*

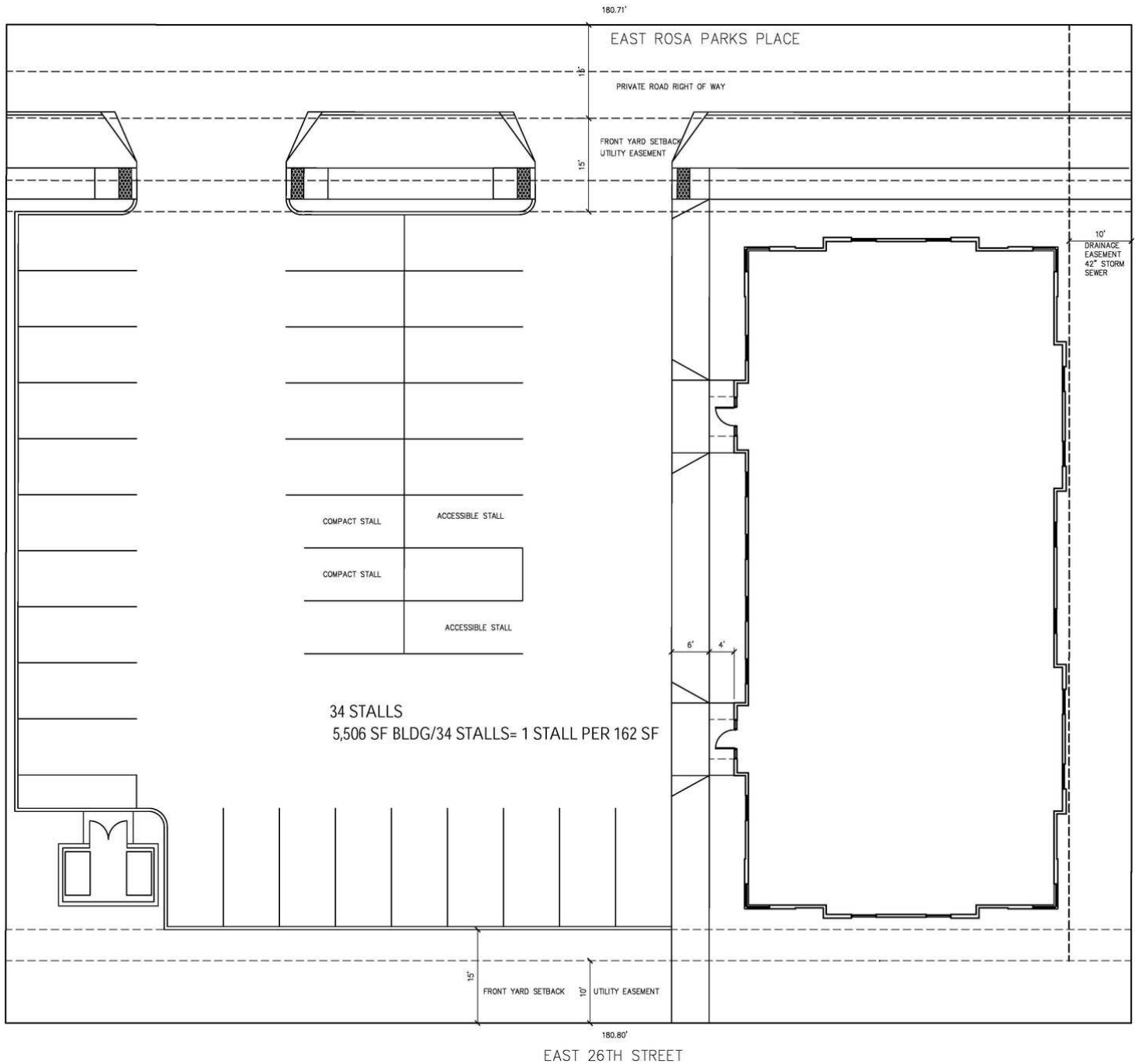


ROSA PARKS PLACE OFFICE



OFFICE SPACE FOR LEASE

SITE PLAN



ROSA PARKS PLACE OFFICE



OFFICE SPACE FOR LEASE

