

FOR LEASE



VELOCITY BUILT-TO-SUIT

INDUSTRIAL SPACE

Bender
COMMERCIAL



4701 NORTH VELOCITY AVENUE
SIOUX FALLS, SD



20,000 SF



CONTACT BROKER

- Subdividable to 4,000 SF.
- Flex space located on the corner of Producer Lane and Velocity Avenue in Sioux Empire Development Park 8.
- 3-Phase Power. Forced-air heat. 28' sidewalls.
- Dock and grade-level doors and office build-out negotiable.
- Easy access to Cliff Avenue, Benson Road, I-229, I-90 and Veteran's Parkway.
- Contact broker for occupancy.

BRADYN NEISES, SIOR
bradyn@benderco.com
605-782-1682

ROB FAGNAN, SIOR
rob@benderco.com
605-782-1672



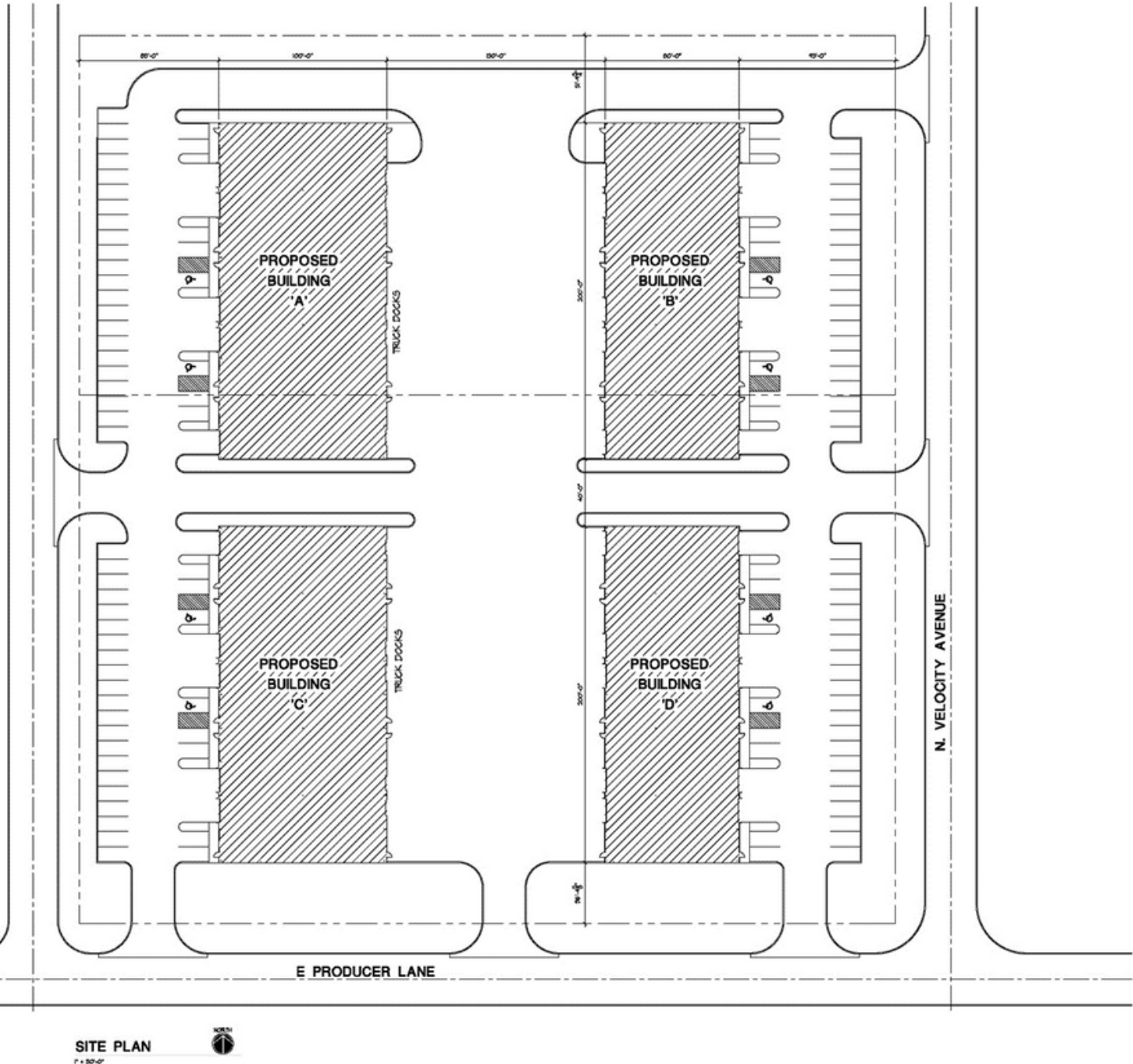
Bender Commercial Real Estate Services | 305 West 57th Street | Sioux Falls, SD 57108 | 605-336-7600 | benderco.com

© 2023 Bender Companies. Information herein deemed reliable, but not guaranteed.

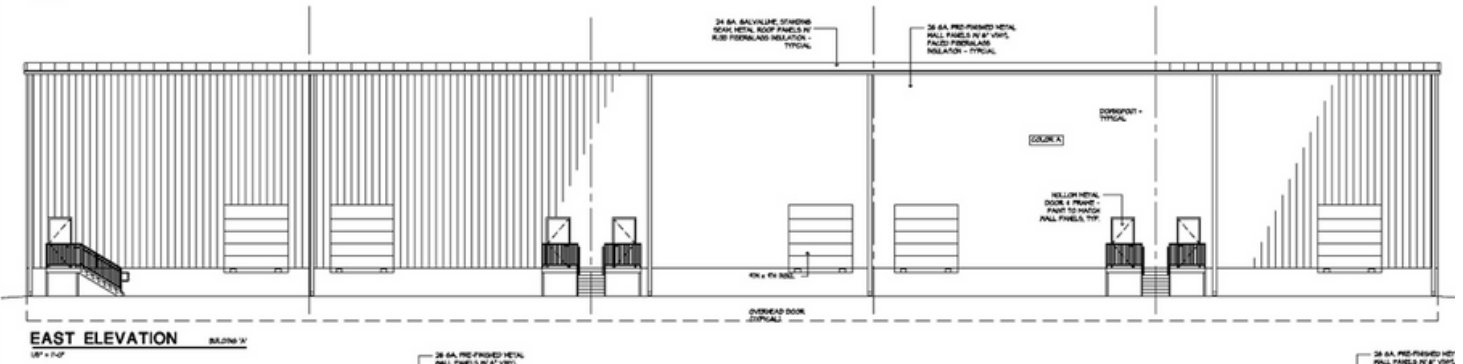
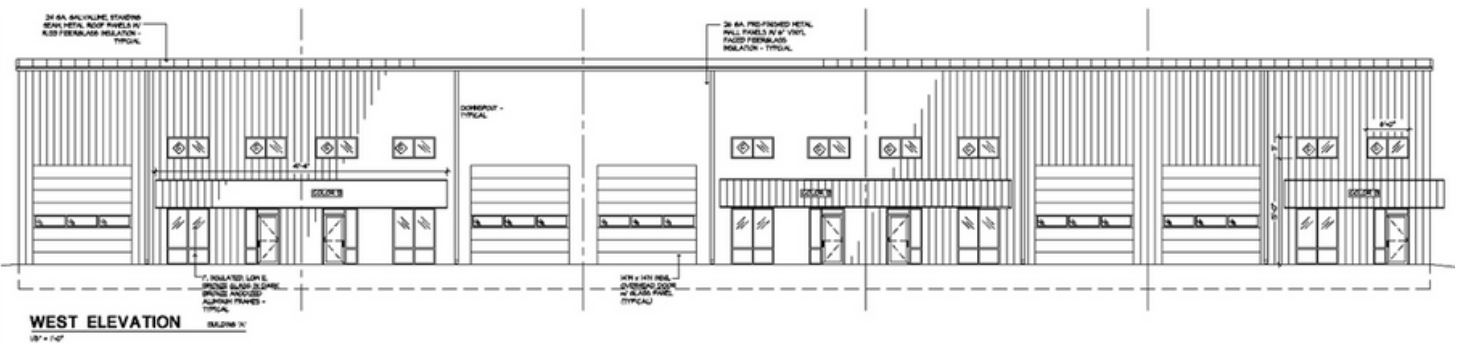
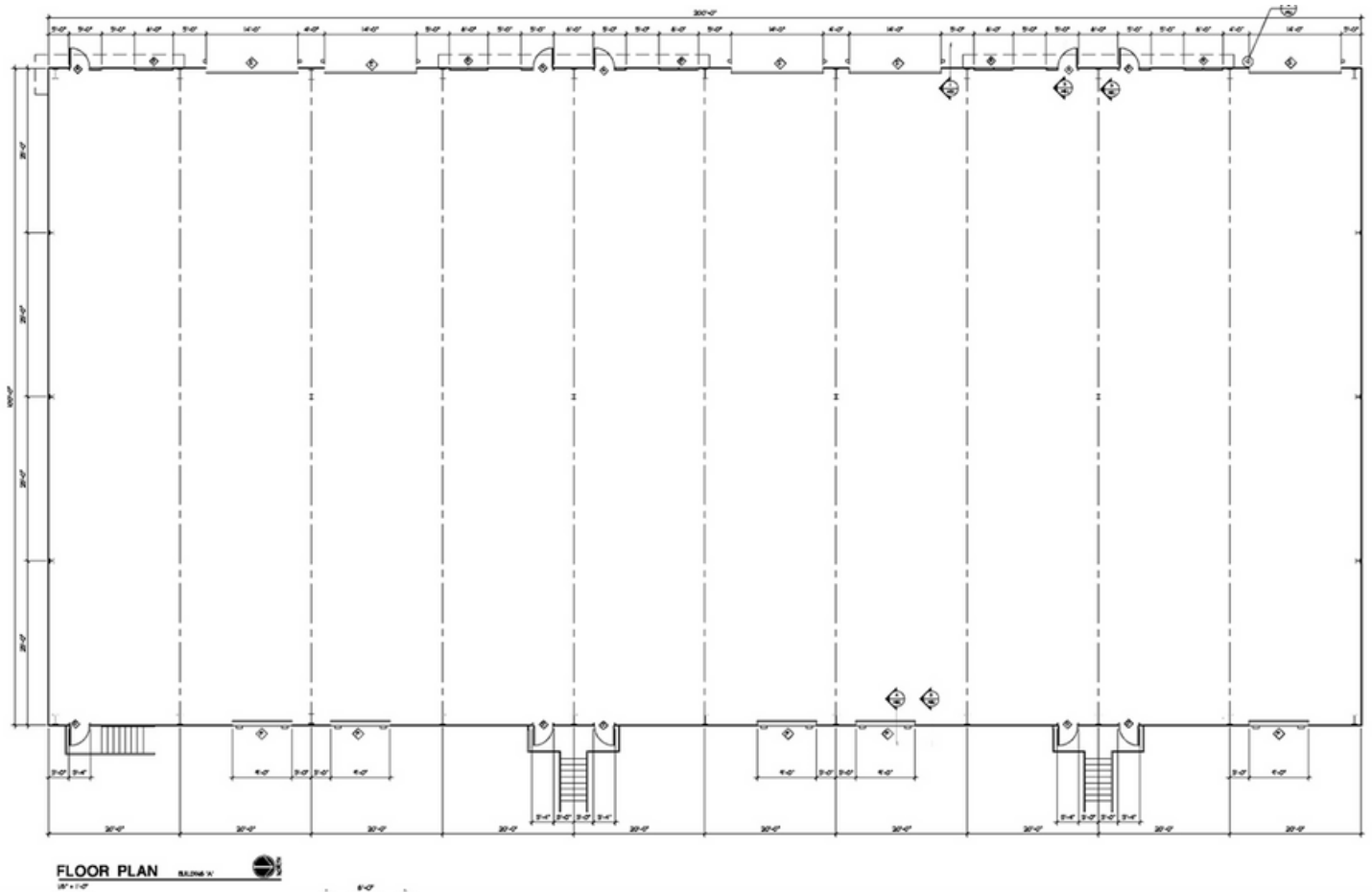
VELOCITY BUILD-TO-SUIT



INDUSTRIAL SPACE FOR LEASE



BUILDINGS A & C

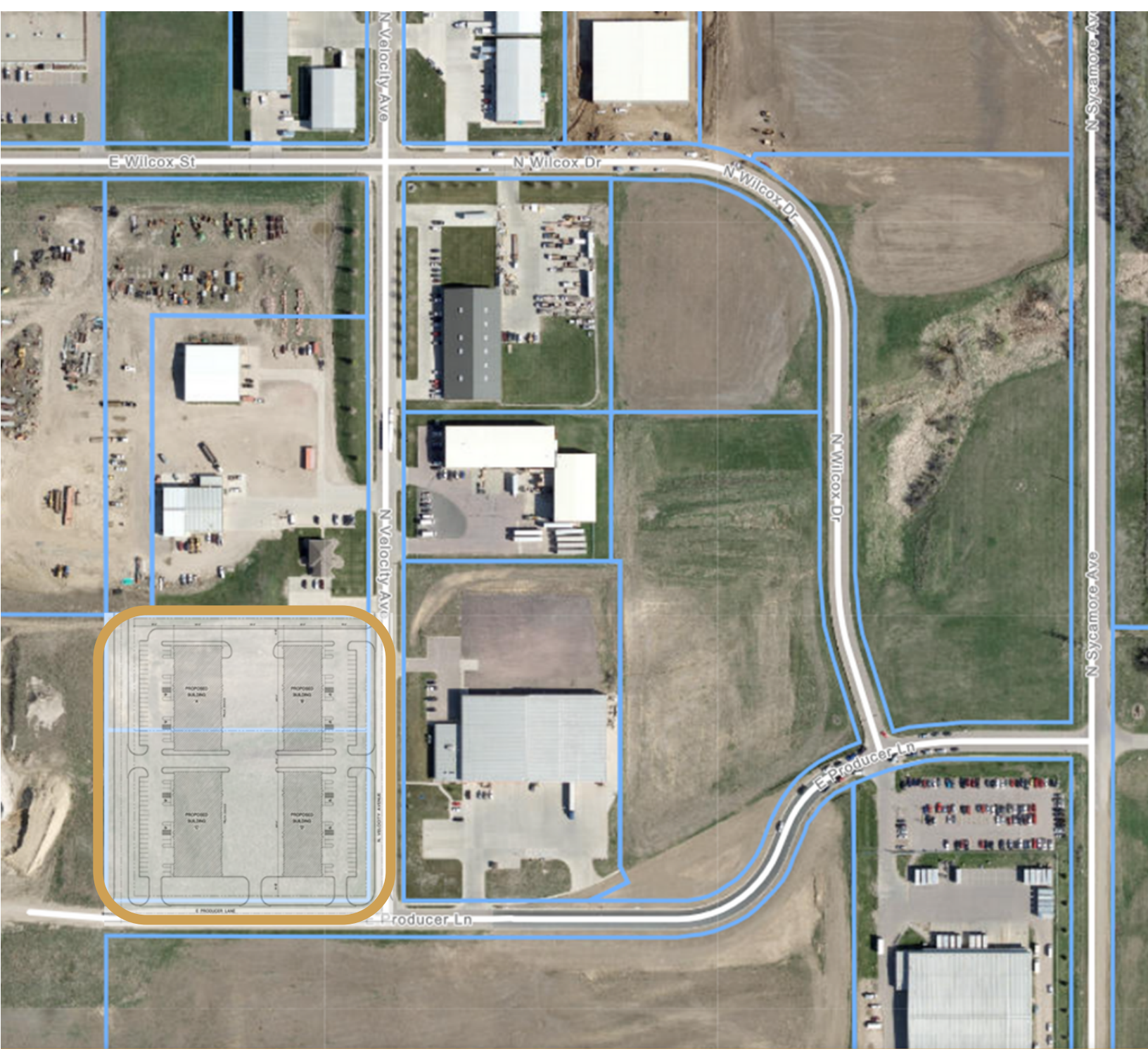




VELOCITY BUILT-TO-SUIT



INDUSTRIAL SPACE FOR LEASE



VELOCITY BUILT-TO-SUIT



INDUSTRIAL SPACE FOR LEASE

