



**FOR SALE**

# SUNDANCE COMMERCIAL LAND

COMMERCIAL LAND

**Bender**  
COMMERCIAL



**5915 EAST 26TH STREET  
SIOUX FALLS, SD**



**32,019 SF**



**\$25.00/SF**

- Commercial land located in the Sundance Development on 26th Street and Veteran's Parkway in east Sioux Falls.
- Zoned C-2 Commercial.
- Access from 26th Street.
- Great eastside location with a daily combined traffic count of 34,600 vehicles.
- Liquor license available.
- Great site for restaurant with video lottery capabilities.
- Neighboring businesses include Avera Medical Group, Casey's Convenience Store, Capital Services, Caribou Coffee and Dawley Village (Century Theatres, Target, Kohls, Walmart and many others).

**BOBBIE TIBBETTS**

bobbie@benderco.com  
605-670-9455

**REGGIE KUIPERS, SIOR**

reggie@benderco.com  
605-496-2966



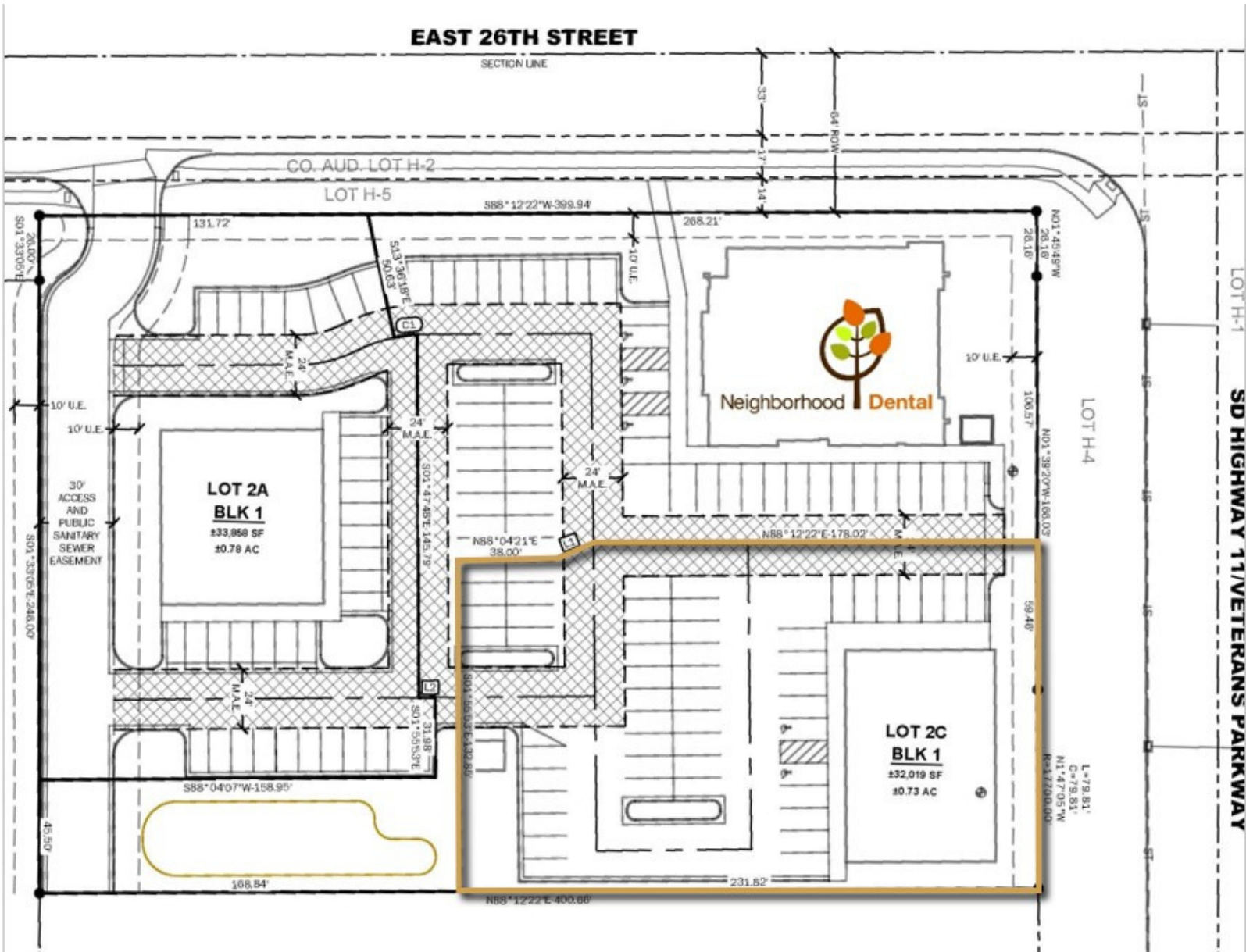
Bender Commercial Real Estate Services | 305 West 57th Street | Sioux Falls, SD 57108 | 605-336-7600 | benderco.com

© 2024 Bender Companies. Information herein deemed reliable, but not guaranteed.

# SUNDANCE COMMERCIAL LAND



## COMMERCIAL LAND FOR SALE



# SUNDANCE COMMERCIAL LAND



## COMMERCIAL LAND FOR SALE



# SUNDANCE COMMERCIAL LAND



## COMMERCIAL LAND FOR SALE

