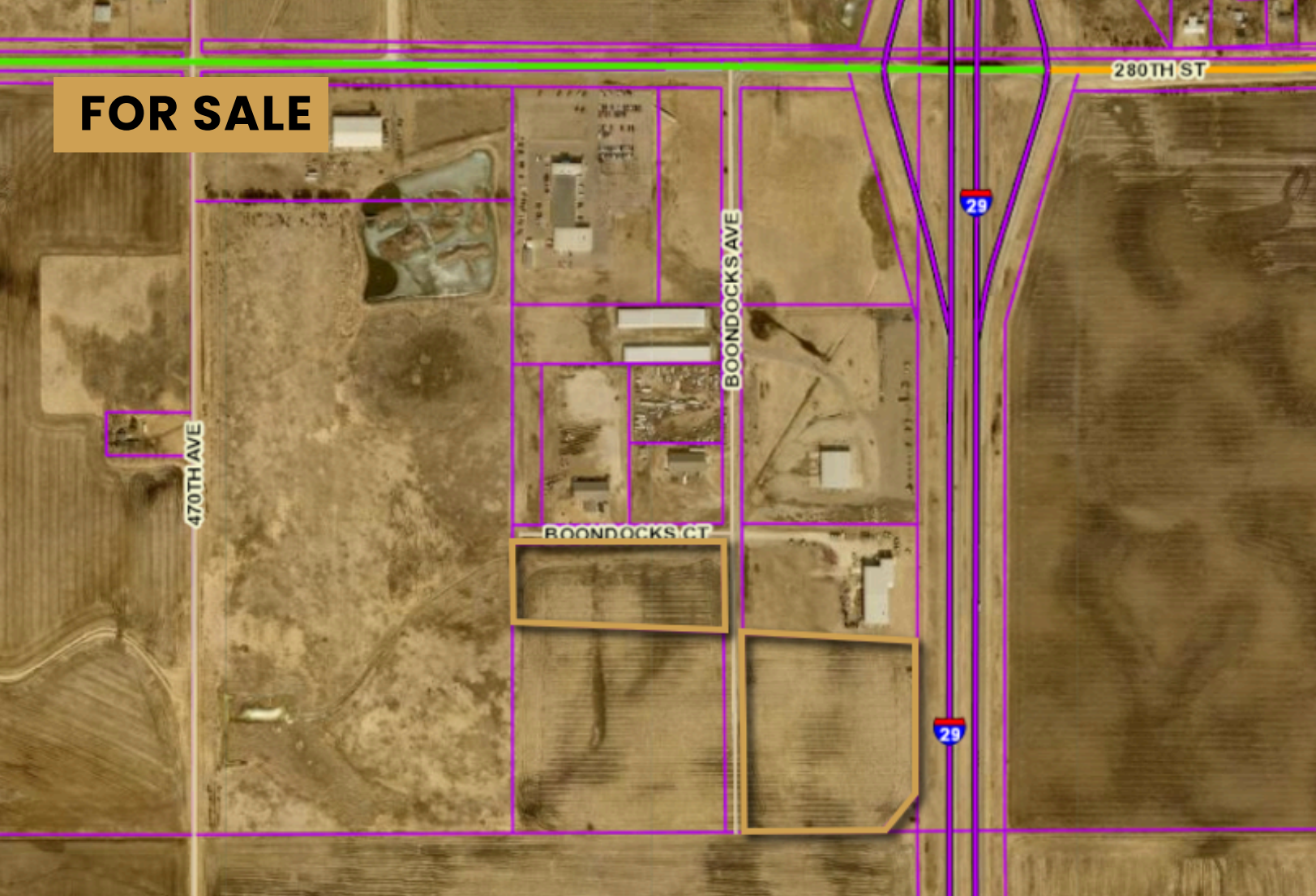


FOR SALE



SOUTHTOWN LAND

INDUSTRIAL LAND

Bender
COMMERCIAL



**BOONDOCKS AVENUE & I-29
WORTHING, SD**



2.8 - 9.0 ACRES +/-



\$2.75 - \$3.25/SF

- Industrial lots located near Worthing I-29 Exit.
- Some lots with frontage along I-29.
- Western lot prices based on useable land, however buyers will be responsible for maintaining their ponding area.
- Jurisdictional wetlands in the northwest corner of Tract 9.
- Utilities- Lincoln County Rural Water, Septic, Propane, Southeastern Electric.
- Boondocks Avenue will be extended to south end of property.

ROB FAGNAN, SIOR

rob@benderco.com

605-782-1672

REGGIE KUIPERS, SIOR

reggie@benderco.com

605-496-2966



Bender Commercial Real Estate Services | 305 West 57th Street | Sioux Falls, SD 57108 | 605-336-7600 | benderco.com

© 2024 Bender Companies. Information herein deemed reliable, but not guaranteed.

SOUTHTOWN LAND



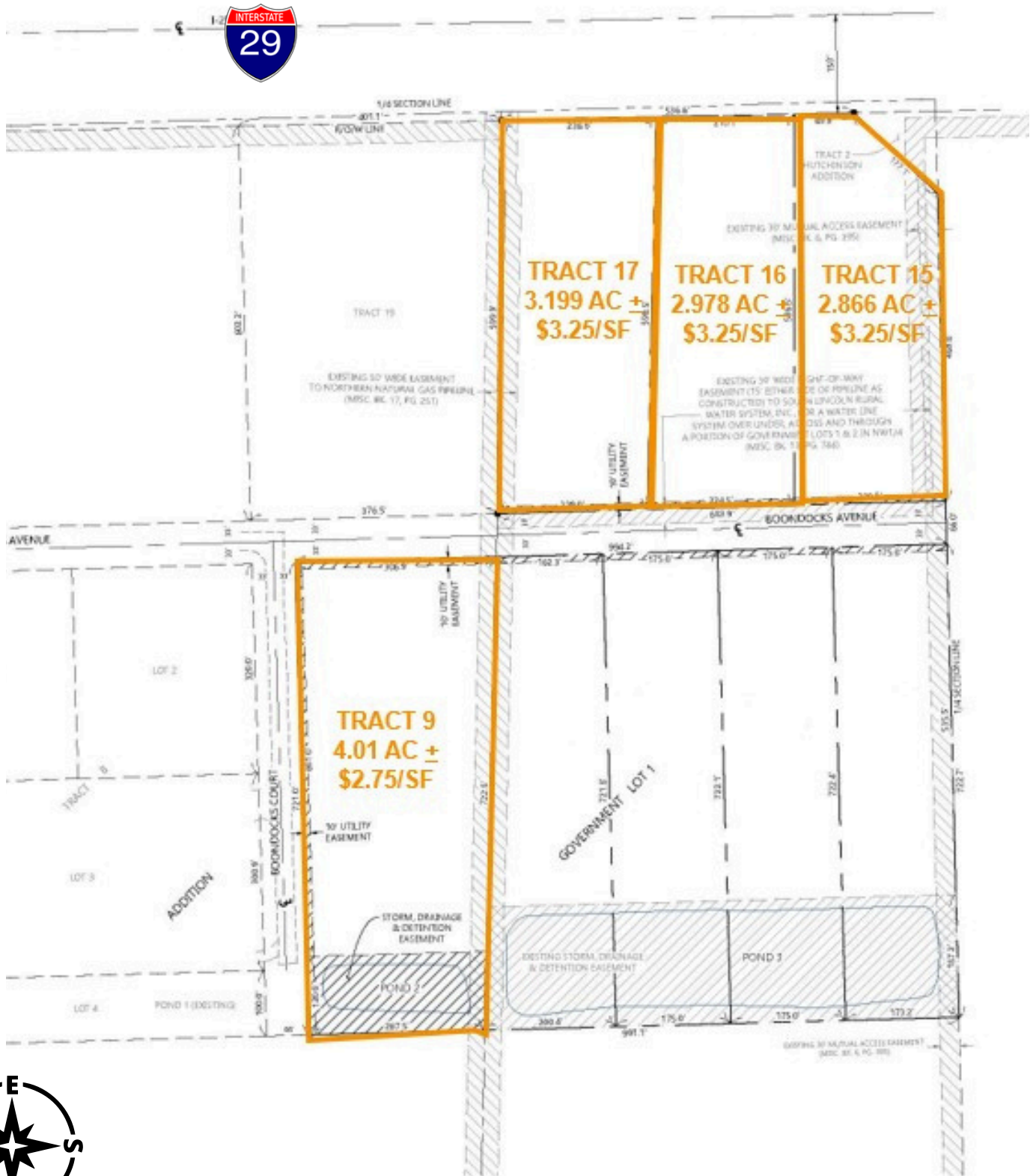
INDUSTRIAL LAND FOR SALE



SOUTHTOWN LAND



INDUSTRIAL LAND FOR SALE



SOUTHTOWN LAND



INDUSTRIAL LAND FOR SALE

