





FOR SALE

ROVANG INDUSTRIAL PARK

INDUSTRIAL LAND

Bender
COMMERCIAL


ROVANG INDUSTRIAL PARK
 BRANDON, SD


1.93 - 8.94 AC


\$3.50 - \$4.25/SF

- Industrial lots located near the Brandon/Corson I-90 Exit 406 - approximately 8 miles east of Sioux Falls.
- Rail Service by BNSF.
- Water and waste water: City of Brandon Electrical: Sioux Valley Energy
- Natural gas: MidAmerican Energy Telecom: Alliance Communications
- Industrial park services by sub-regional pond.
- **NON-EXCLUSIVE LISTING - Contact Broker for commission splits.**

<p>BRADYN NEISES, SIOR bradyn@benderco.com 605-782-1682</p>	<p>DOUGLAS BROCKHOUSE dbrock@benderco.com 605-728-5800</p>
--	---



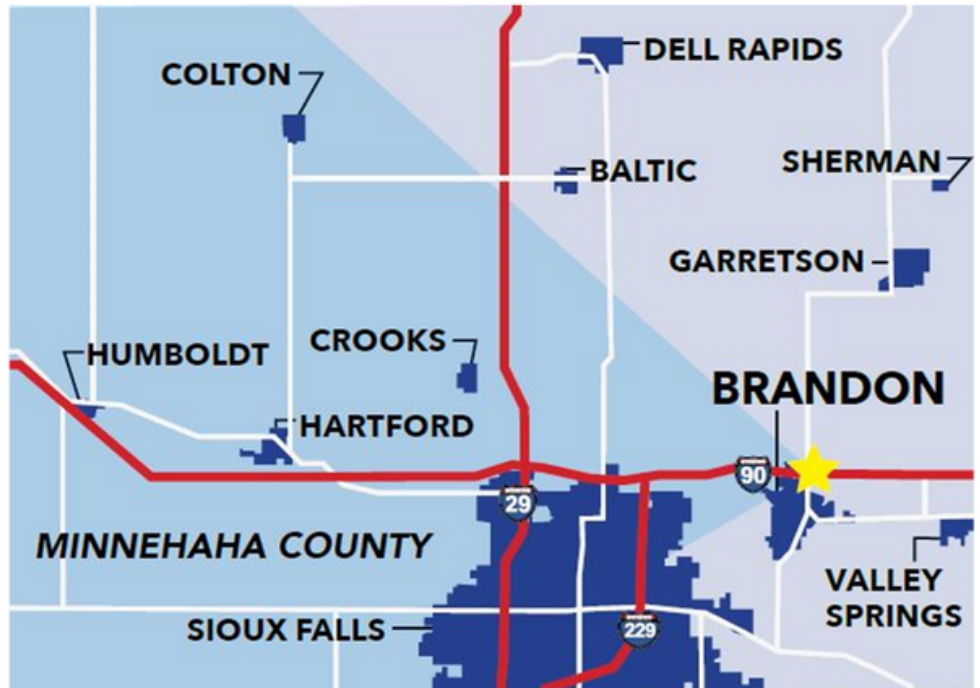
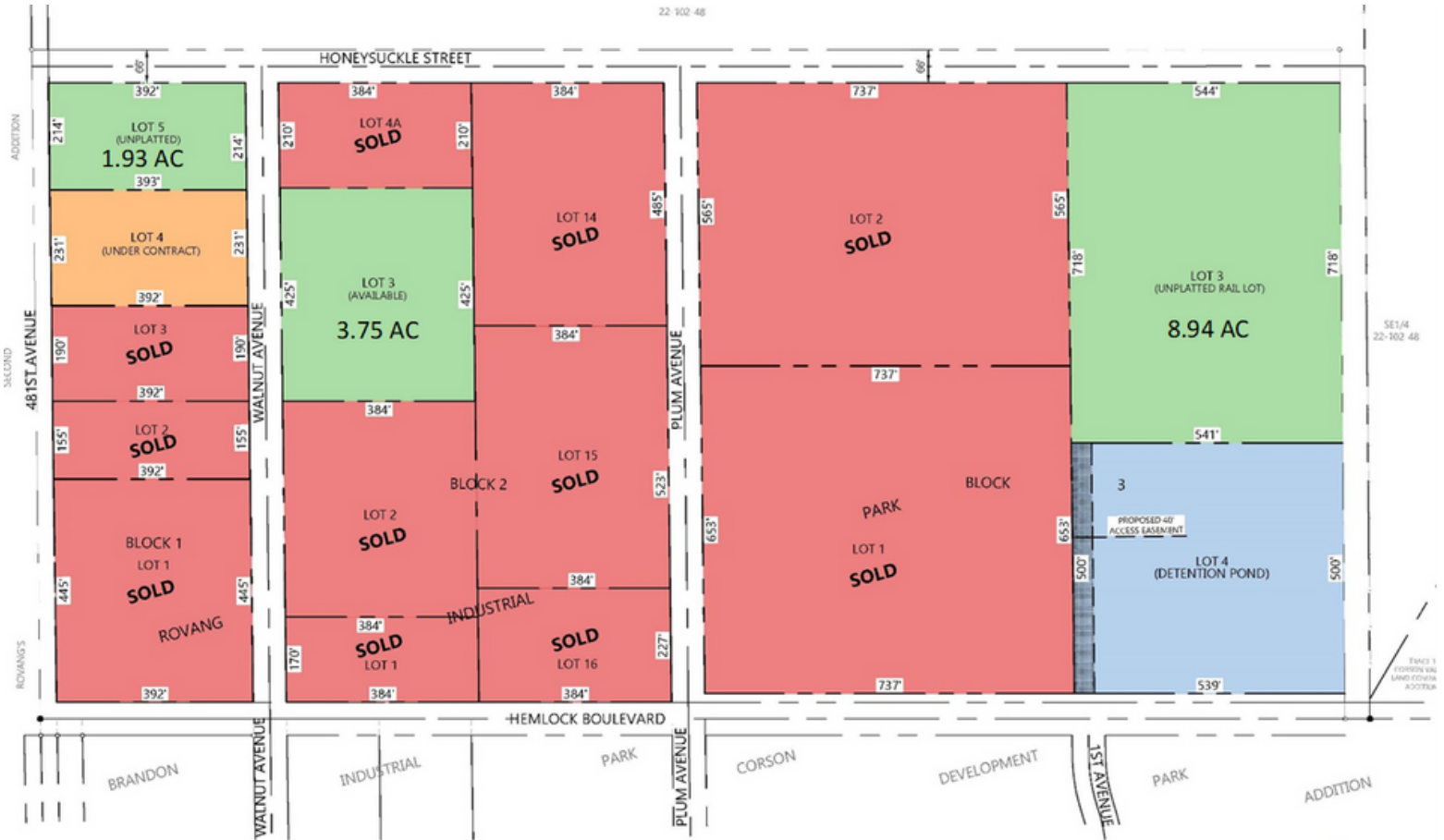
Bender Commercial Real Estate Services | 305 West 57th Street | Sioux Falls, SD 57108 | 605-336-7600 | benderco.com

© 2023 Bender Companies. Information herein deemed reliable, but not guaranteed.

ROVANG INDUSTRIAL PARK



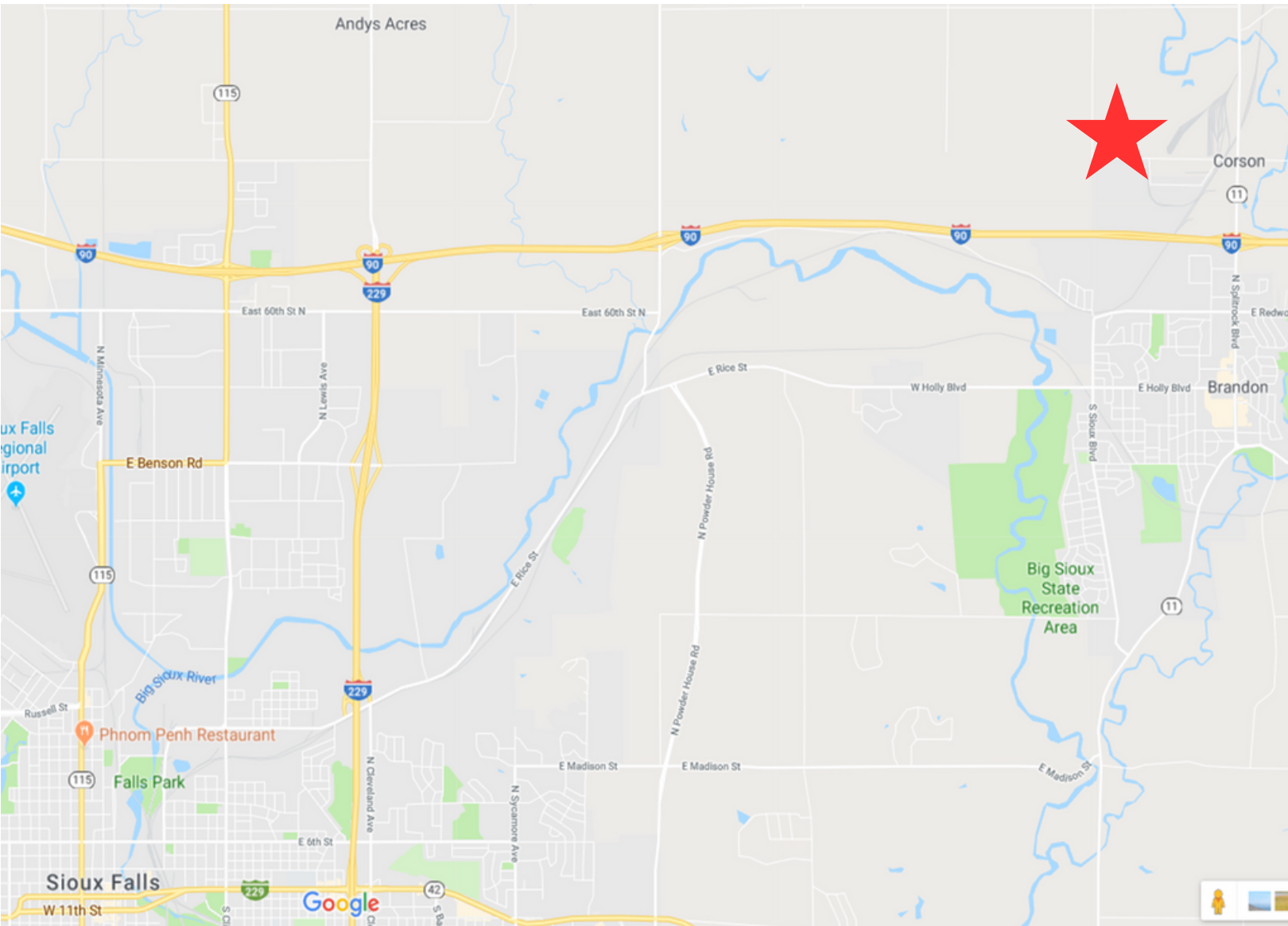
INDUSTRIAL LAND FOR SALE



ROVANG INDUSTRIAL PARK



INDUSTRIAL LAND FOR SALE



INDUSTRIAL LAND FOR SALE

DEMOGRAPHIC SUMMARY

Rovang Industrial Park
Ring of 5 miles

KEY FACTS

13,688

Population



4,847

Households

36.2

Median Age

\$91,462

Median Disposable Income

EDUCATION

2%

No High School Diploma



22%

High School Graduate



34%

Some College



42%

Bachelor's/Grad/Prof Degree

INCOME



\$106,341

Median Household Income



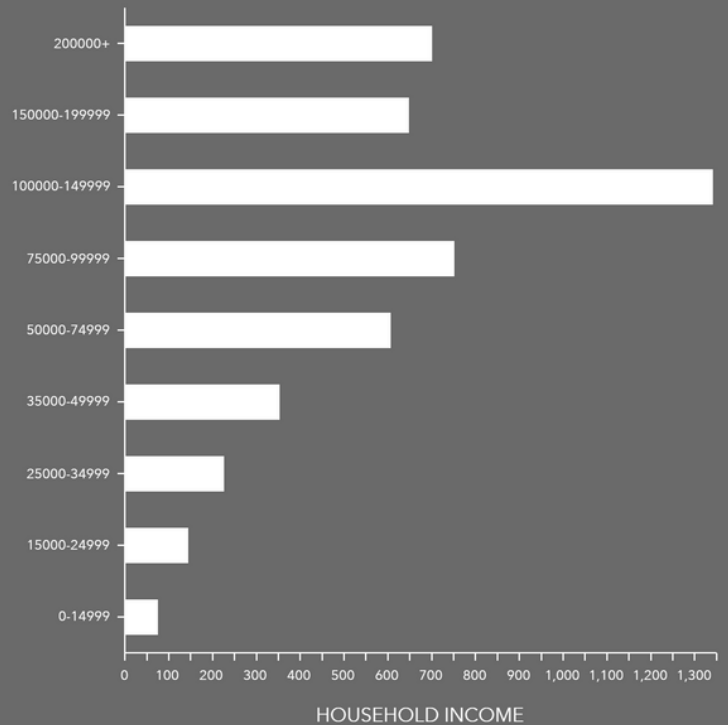
\$47,487

Per Capita Income



\$316,617

Median Net Worth



Source: Esri. The vintage of the data is 2023, 2028.