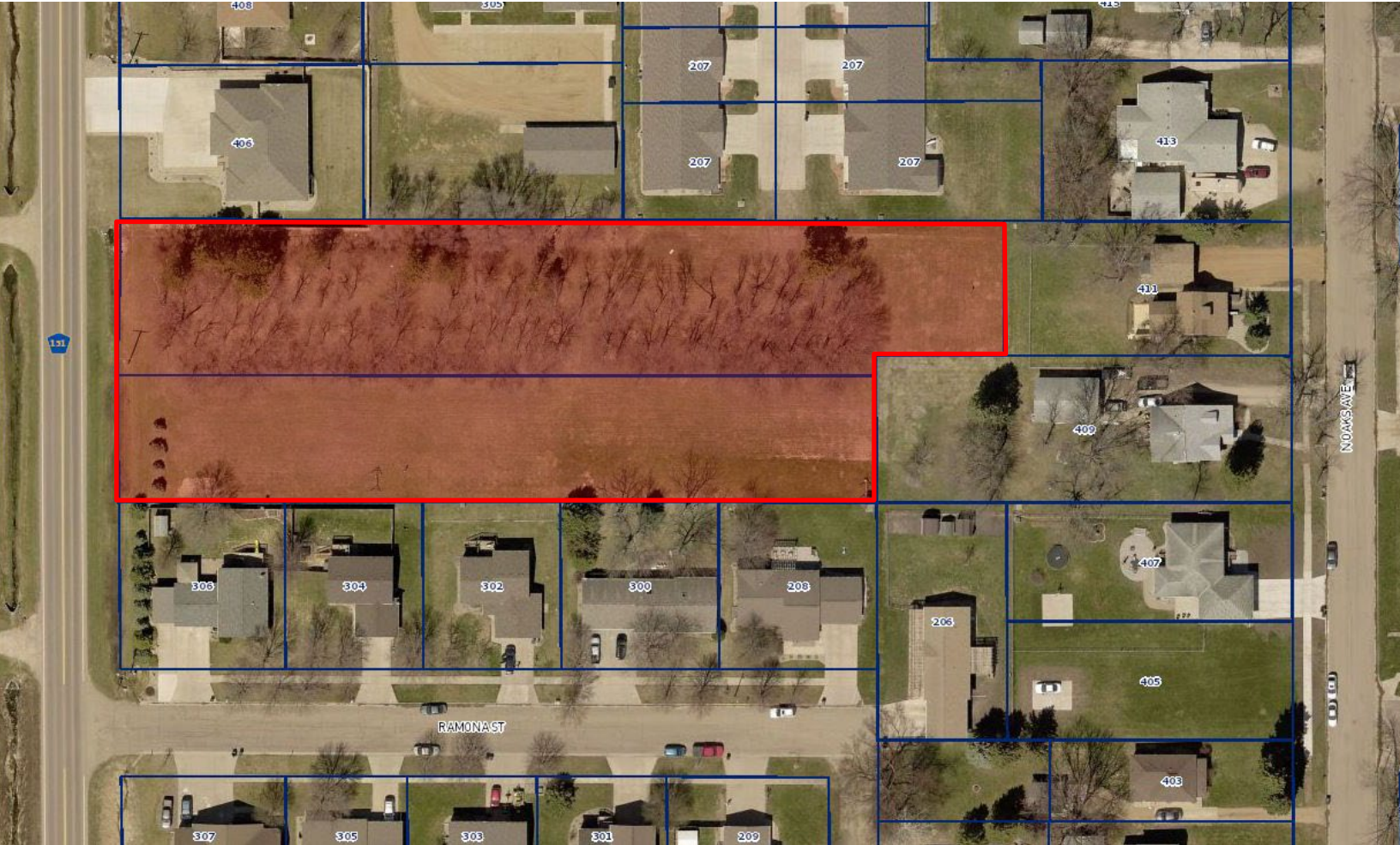


FOR SALE
RESIDENTIAL LAND – HARTFORD, SD

We open doors.



PROPERTY FEATURES:

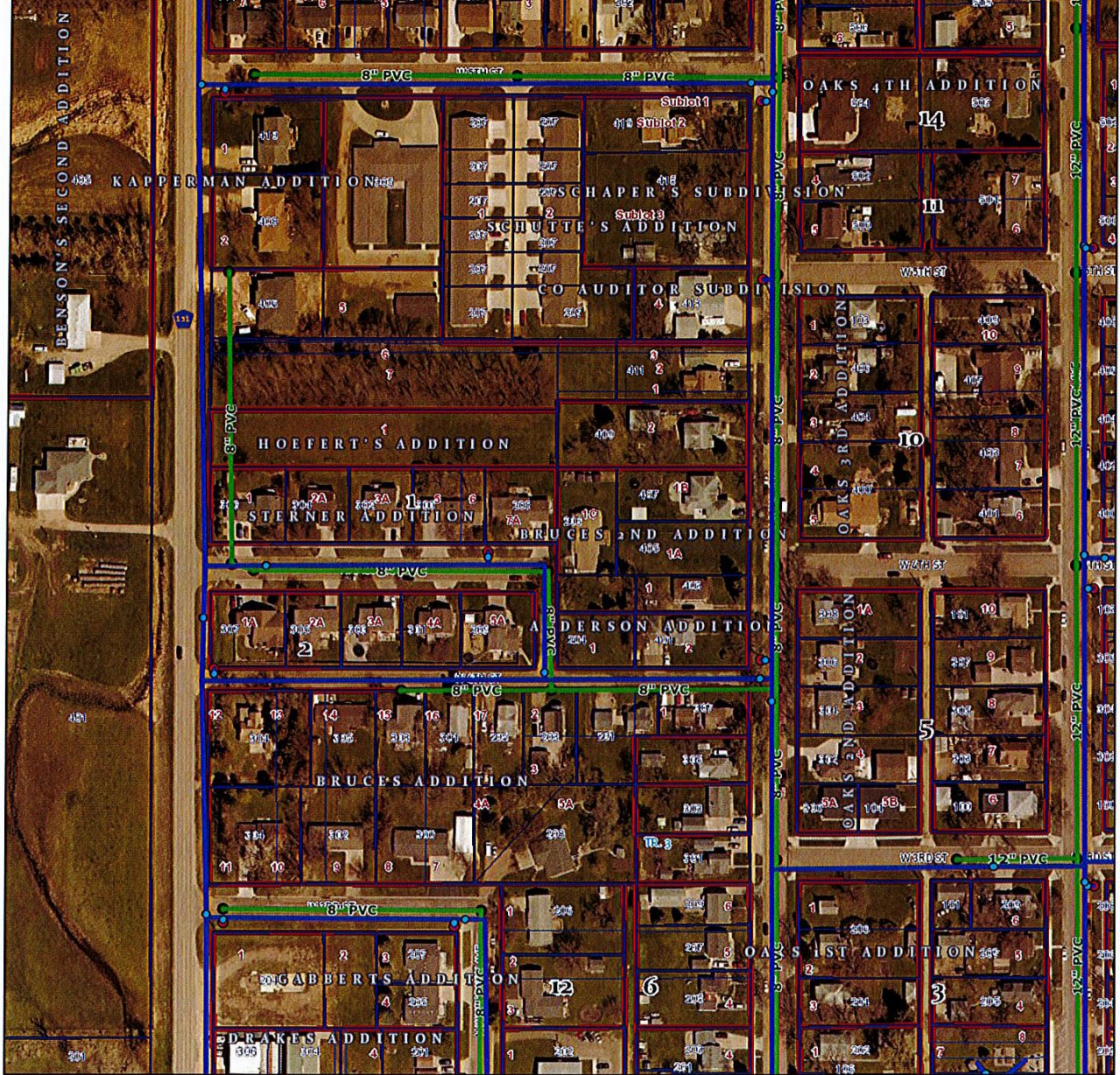
- **\$185,000.00**
- **1.86 acre**
- Residential lots available along Western Avenue in Hartford.
- Mature tree to build around.
- City utilities to the property.
- Direct access via Western Avenue.
- Easy access to I-90.
- A fast-growing community, Hartford was named the 2020 South Dakota Governor's "Small Community of the Year".

For More Information, Please Contact:

GERALD TEUNISSEN
gerald@benderco.com
(605) 366-1979



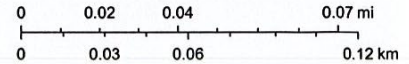
We open doors.



6/10/2021, 2:26:58 PM

1:2,257

- WATR_Valves
- WATR_Towers
- WATR_Service_Lines
- Label
- Single symbol
- WATR_Mains
- WATR_Hydrants
- SSWR_Service_Lines
- Label
- PE
- PVC
- VCP
- MATERIAL is "
- Label
- Single symbol
- SSWR_MH
- SSWR_Lift_Stations
- SSWR_Force_Mains
- SSWR_Facility_Boundaries
- SSWR_Cleanouts
- County Tract
- County Lot
- County Block
- County Additions
- County Tax Lines
- PLAT
- TAXLOT
- Minnehaha County Parcels



Maxar, Microsoft, Minnehaha County GIS

**HARTFORD LAND
NORTH WESTERN AVENUE
SIOUX FALLS, SD**

Real Estate Services

Bender
COMMERCIAL

We open doors.

