

**FOR LEASE**



# CENTURY BUSINESS PARK

## WAREHOUSE SPACE

**Bender**  
COMMERCIAL



**710 NORTH EBENEZER AVENUE  
SIOUX FALLS, SD**



**13,628 SF**

**\$ \$8.25/SF NNN**

- Warehouse in the Legacy North Farm Development in west Sioux Falls.
- Space has four (4) 10'H x 9'W dock high doors.
- 21'6" clear height.
- 480/277v and 208/120v 3-Phase 200 amp power.
- Ample onsite parking.
- Easy access to I-29, Madison Street and West 12th Street.
- TI allowance negotiable.
- Available June 1, 2026.

**BRADYN NEISES, SIOR**

bradyn@benderco.com  
605-782-1682

**DOUGLAS BROCKHOUSE**

dbrock@benderco.com  
605-728-5800



Bender Commercial Real Estate Services | 305 West 57th Street | Sioux Falls, SD 57108 | 605-336-7600 | benderco.com

© 2026 Bender Companies. Information herein deemed reliable, but not guaranteed.

# CENTURY BUSINESS PARK



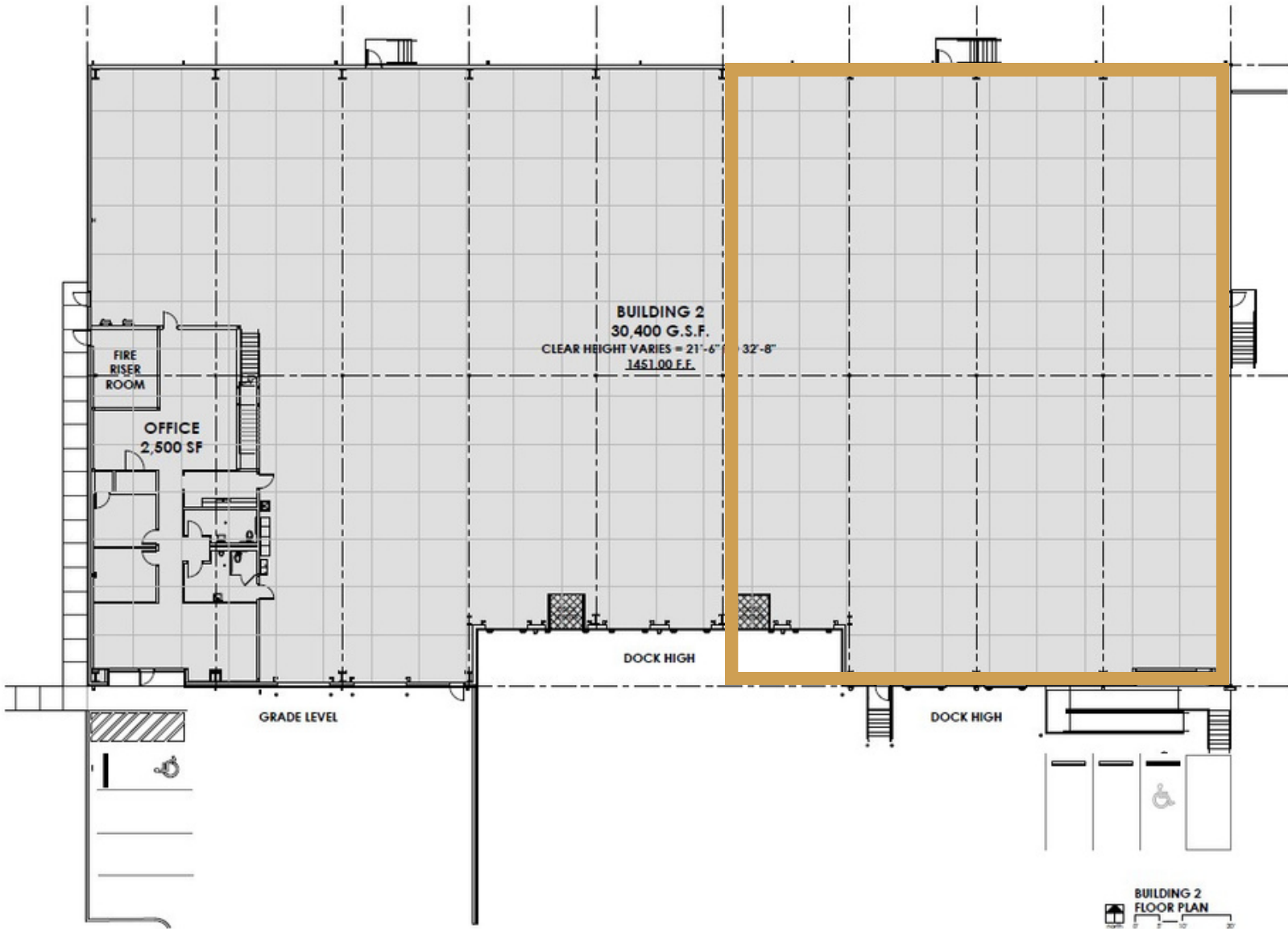
## WAREHOUSE SPACE FOR LEASE



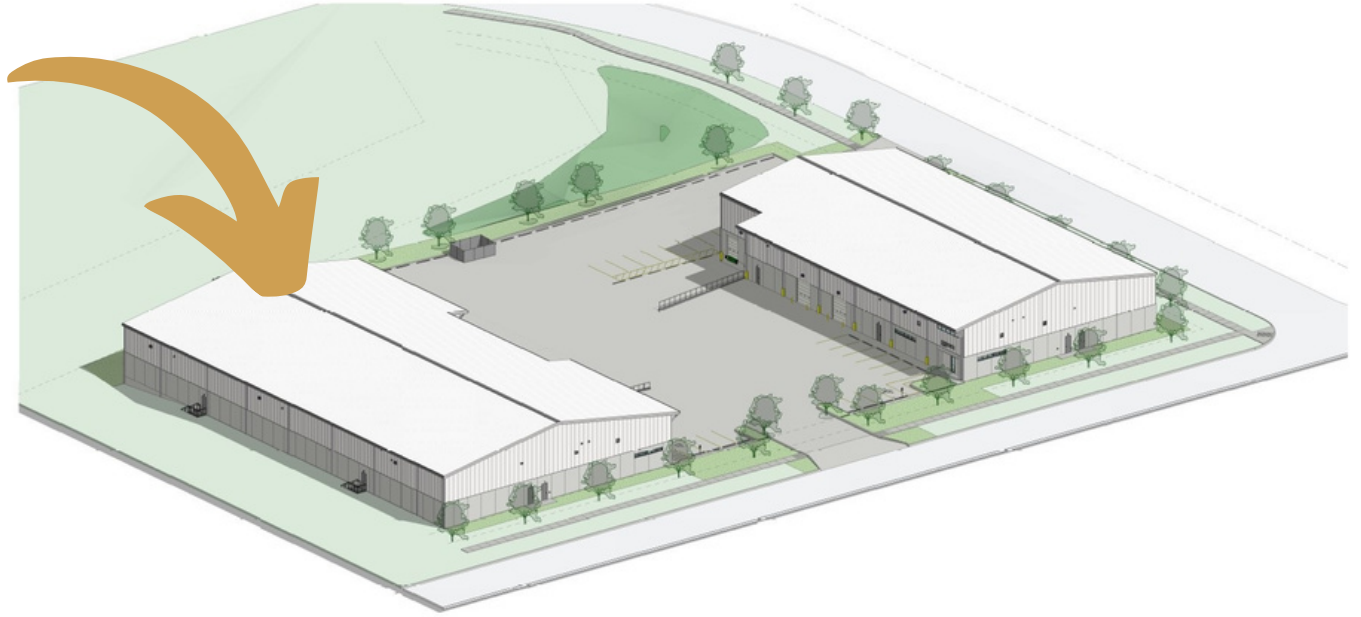
# CENTURY BUSINESS PARK



## WAREHOUSE SPACE FOR LEASE



# CENTURY BUSINESS PARK



# CENTURY BUSINESS PARK



WAREHOUSE SPACE FOR LEASE



# CENTURY BUSINESS PARK



## WAREHOUSE SPACE FOR LEASE

