

**FOR LEASE**



# LYNCREST OFFICE SPACE

OFFICE SPACE

**Bender**  
COMMERCIAL



**6901 SOUTH LYNCRESTPLACE, SUITE 103**  
**SIOUX FALLS, SD**



**1,140 RSF**  
**(908 USF)**



**\$16.50/SF NNN**  
**EST NNNs: \$9.95/SF**

- Office space available on the corner of 77th Street and Lyncrest Avenue in southwest Sioux Falls.
- Space consists of reception area, three (3) private offices, breakroom and shared patio.
- Common area restrooms.
- Parking ratio of 1:198.
- Monument signage available.
- Perfect space for professional office user.
- Easy access to Minnesota Avenue (one block away).

**ALEX SOUNDY , SIOR** | [alex@benderco.com](mailto:alex@benderco.com) | 605-376-3700



Bender Commercial Real Estate Services | 305 West 57th Street | Sioux Falls, SD 57108 | 605-336-7600 | [benderco.com](http://benderco.com)

© 2023 Bender Companies. Information herein deemed reliable, but not guaranteed.



# LYNCREST OFFICE SPACE



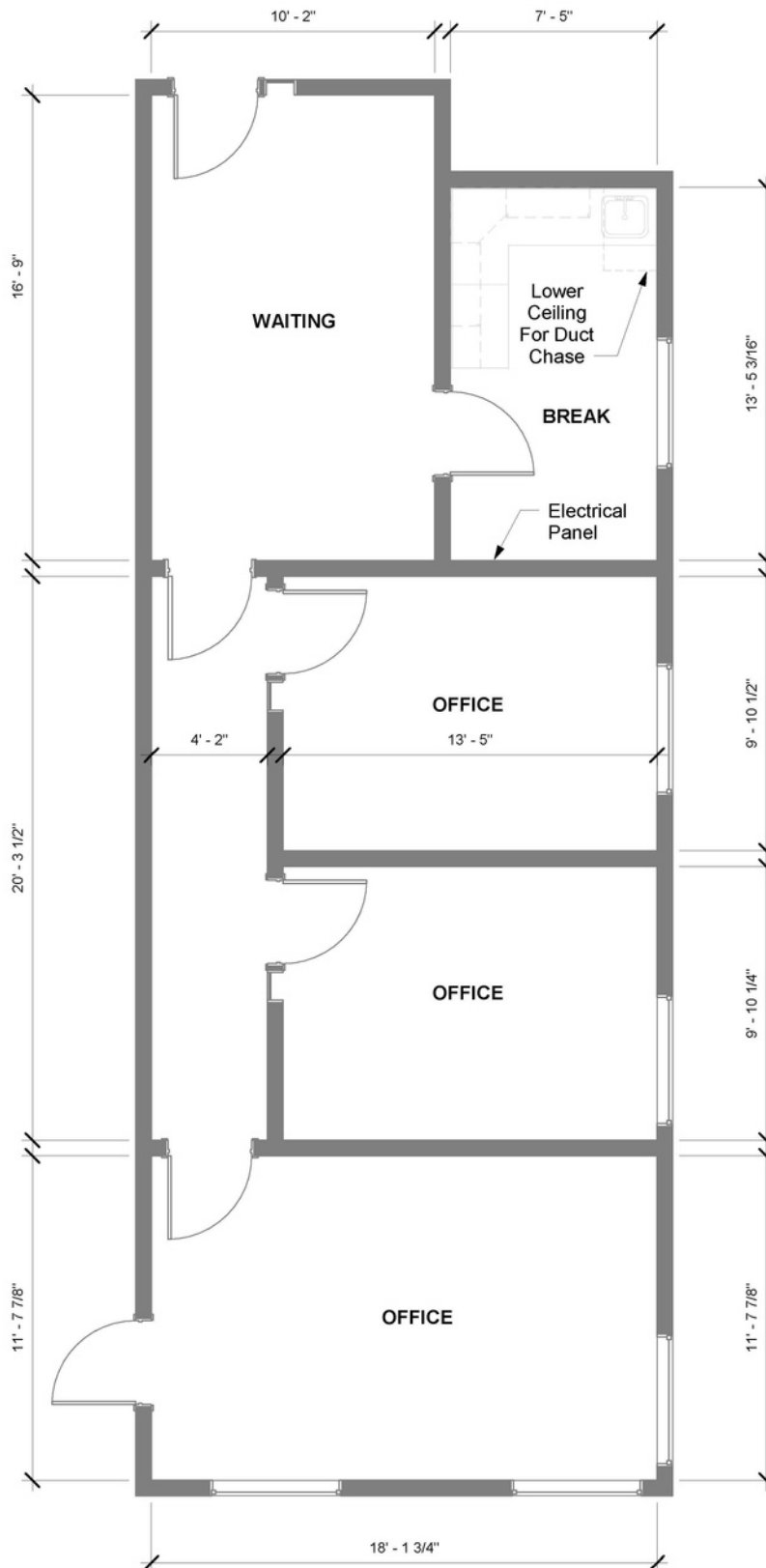
OFFICE SPACE FOR LEASE



# LYNCREST OFFICE SPACE



## OFFICE SPACE FOR LEASE





# LYNCREST OFFICE SPACE



OFFICE SPACE FOR LEASE





# LYNCREST OFFICE SPACE



## OFFICE SPACE FOR LEASE

