

**FOR LEASE**

**6709**

# SERTOMA PLAZA

RETAIL SPACE - 41ST & SERTOMA

**Bender**  
COMMERCIAL



**6709 WEST 41ST STREET  
SIOUX FALLS, SD**



**2,340 SF**



**\$15.00/SF NNN  
EST NNNs: \$5.85/SF**

- Retail/Office space available near the intersection of 41st Street and Sertoma Avenue.
- Open space with large window
- Building and monument signage available.
- Ample on-site parking.
- Great visibility along 41st Street with a daily traffic count of 17,200 vehicles.
- Tenant improvement negotiable.
- Neighboring businesses include Get N Go, Taco John's, Walgreens, First Premier Bank, Ace Hardware, Dollar General, Great Life, Year Round Brown, Gilberto's Mexican, Flyboy Donuts and Roosevelt High School.

**REGGIE KUIPERS, SIOR** | [reggie@benderco.com](mailto:reggie@benderco.com) | 605-782-1663



Bender Commercial Real Estate Services | 305 West 57th Street | Sioux Falls, SD 57108 | 605-336-7600 | [benderco.com](http://benderco.com)

© 2024 Bender Companies. Information herein deemed reliable, but not guaranteed.

# SERTOMA PLAZA



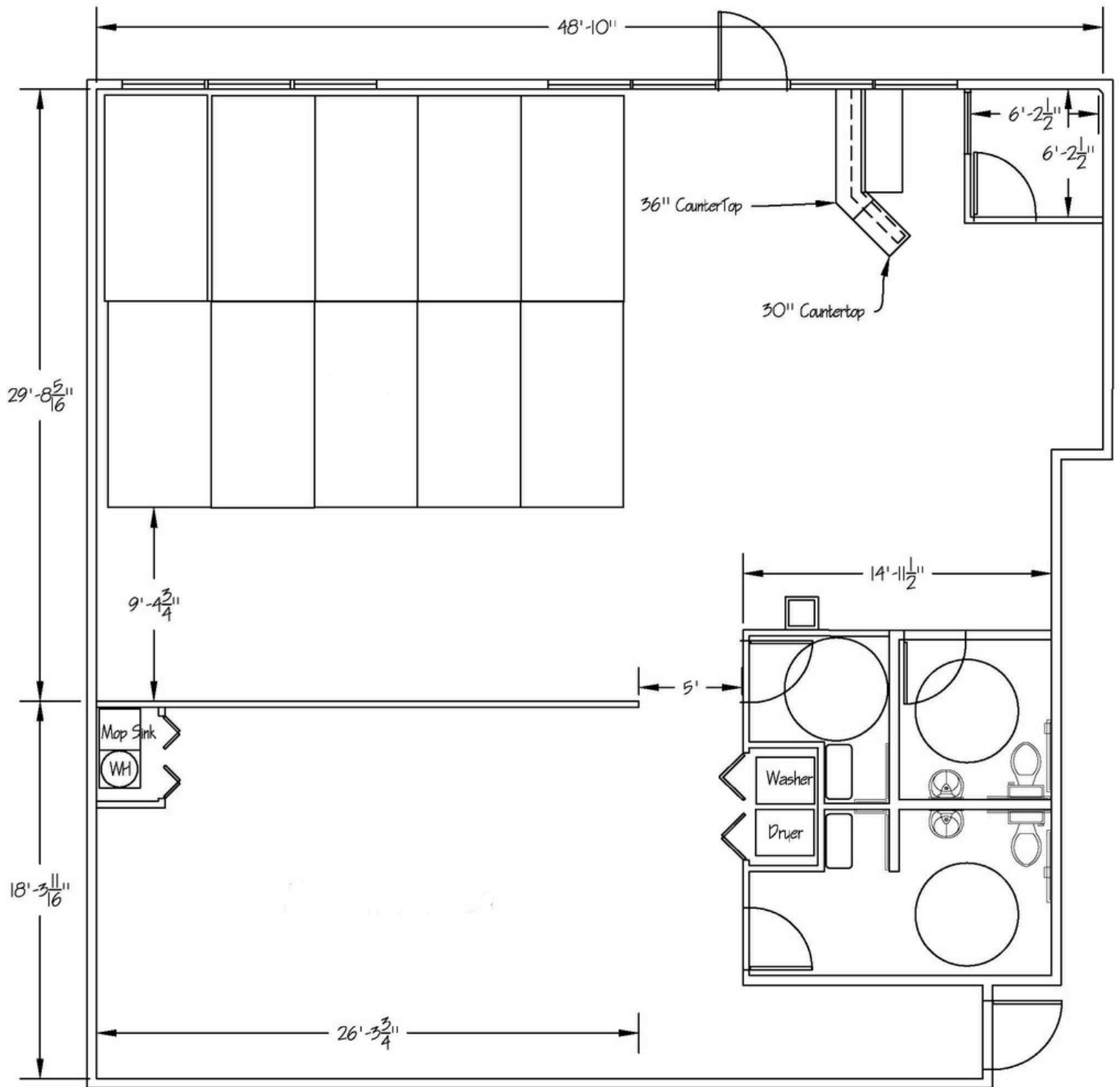
## RETAIL SPACE - 41ST & SERTOMA



# SERTOMA PLAZA



## RETAIL SPACE - 41ST & SERTOMA



# SERTOMA PLAZA



RETAIL SPACE – 41ST & SERTOMA



## RETAIL SPACE – 41ST & SERTOMA

### DEMOGRAPHIC SUMMARY

6701 W 41st St, Sioux Falls, South Dakota, 57106

Ring of 3 miles

#### KEY FACTS

63,959

Population



26,333

Households

35.3

Median Age

\$63,397

Median Disposable Income

#### EDUCATION

4.6%

No High School Diploma



20.5%

High School Graduate



36.3%

Some College/

Associate's Degree



38.6%

Bachelor's/Grad/

Prof Degree

#### INCOME



\$76,186

Median Household Income



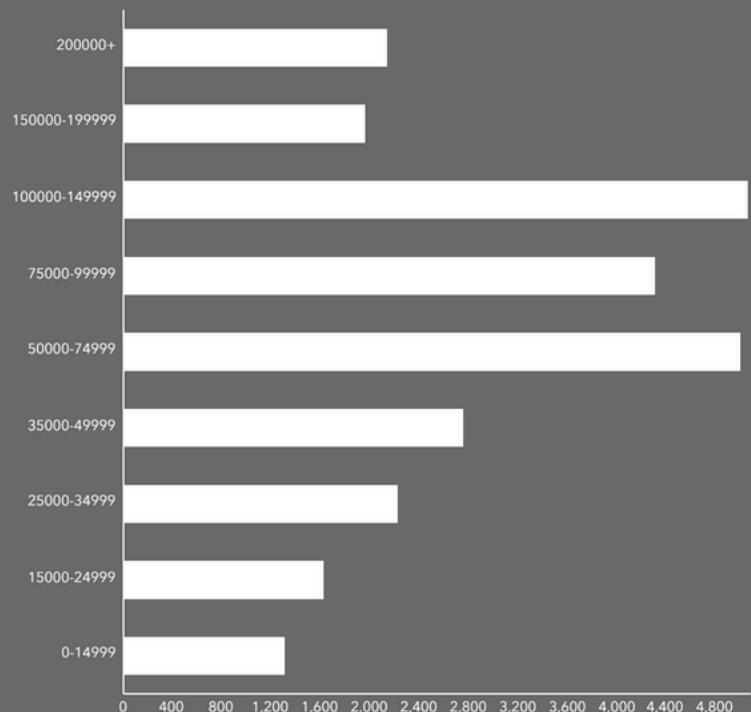
\$41,496

Per Capita Income



\$156,260

Median Net Worth



HOUSEHOLD INCOME

**Source:** This infographic contains data provided by Esri (2023, 2028). © 2024 Esri

# SERTOMA PLAZA



RETAIL SPACE – 41ST & SERTOMA

