



**FOR SALE | OFFICE LAND | 5016 SOUTH BROADBAND LANE | SIOUX FALLS, SD**

## **BROADBAND OFFICE LAND**

- **59,371 SF**
- **For Sale: \$10.25/SF**
- Build-ready office land site located in the established Interstate Crossing Business Park in southwest Sioux Falls.
- Easy access to 57<sup>th</sup> Street, 69<sup>th</sup> Street and Louise Avenue.
- Located two parcels from 57<sup>th</sup> Street, this lot provides build-ready dimensions for nearly any office project.
- Neighboring businesses include SkyZone Trampoline Park, Farm Credit Services of America, Sprouting Ivy Academy, Journey Construction, Software Unlimited, Sammons Financial, MetaBank and CitiBank.

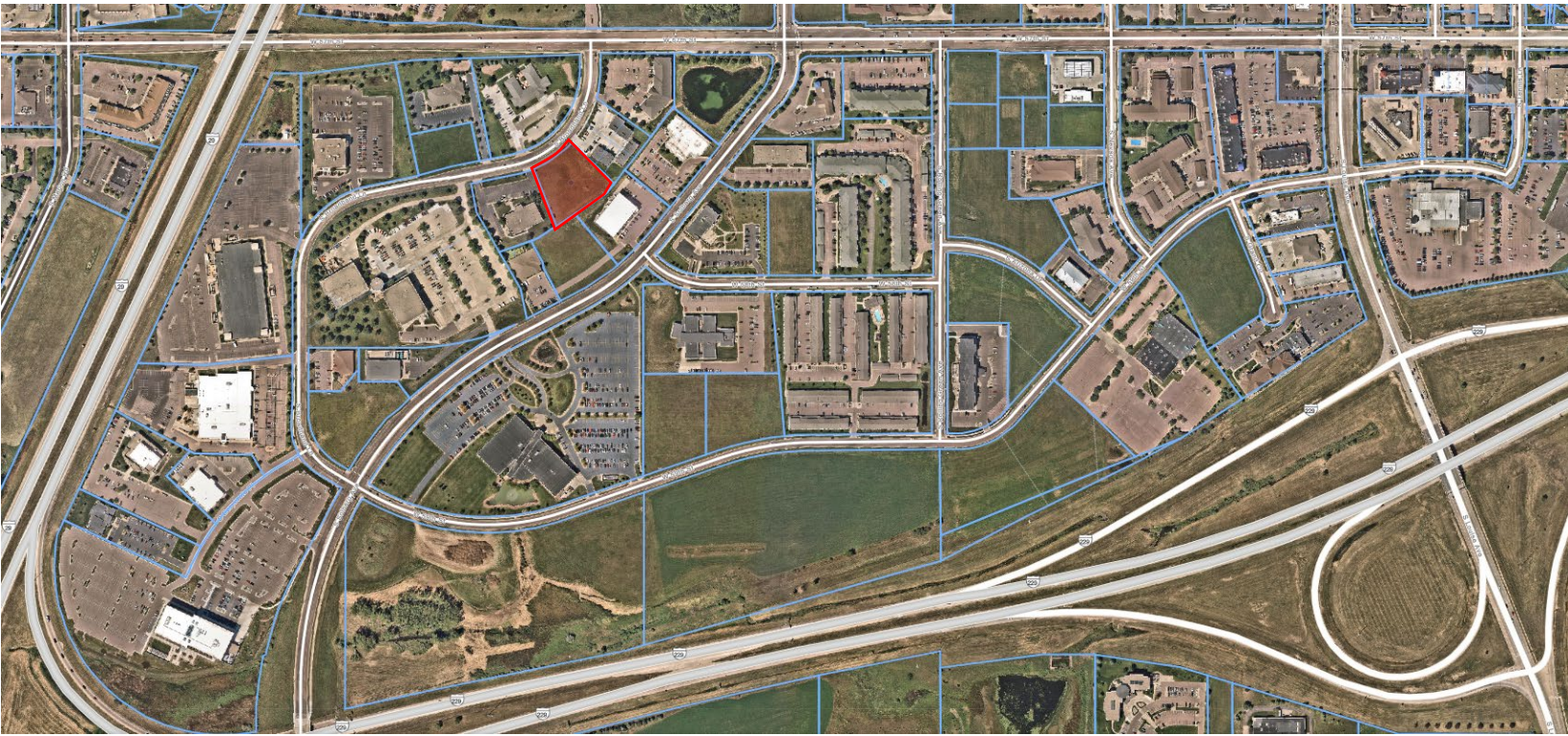
**NICK GUSTAFSON, CCIM**  
[nick@benderco.com](mailto:nick@benderco.com)  
 (605) 782-1668

### **Bender Commercial Real Estate Services**

305 West 57<sup>th</sup> Street  
 Sioux Falls, SD 57108  
 (605) 336-7600  
[www.benderco.com](http://www.benderco.com)

**Bender**  
 COMMERCIAL



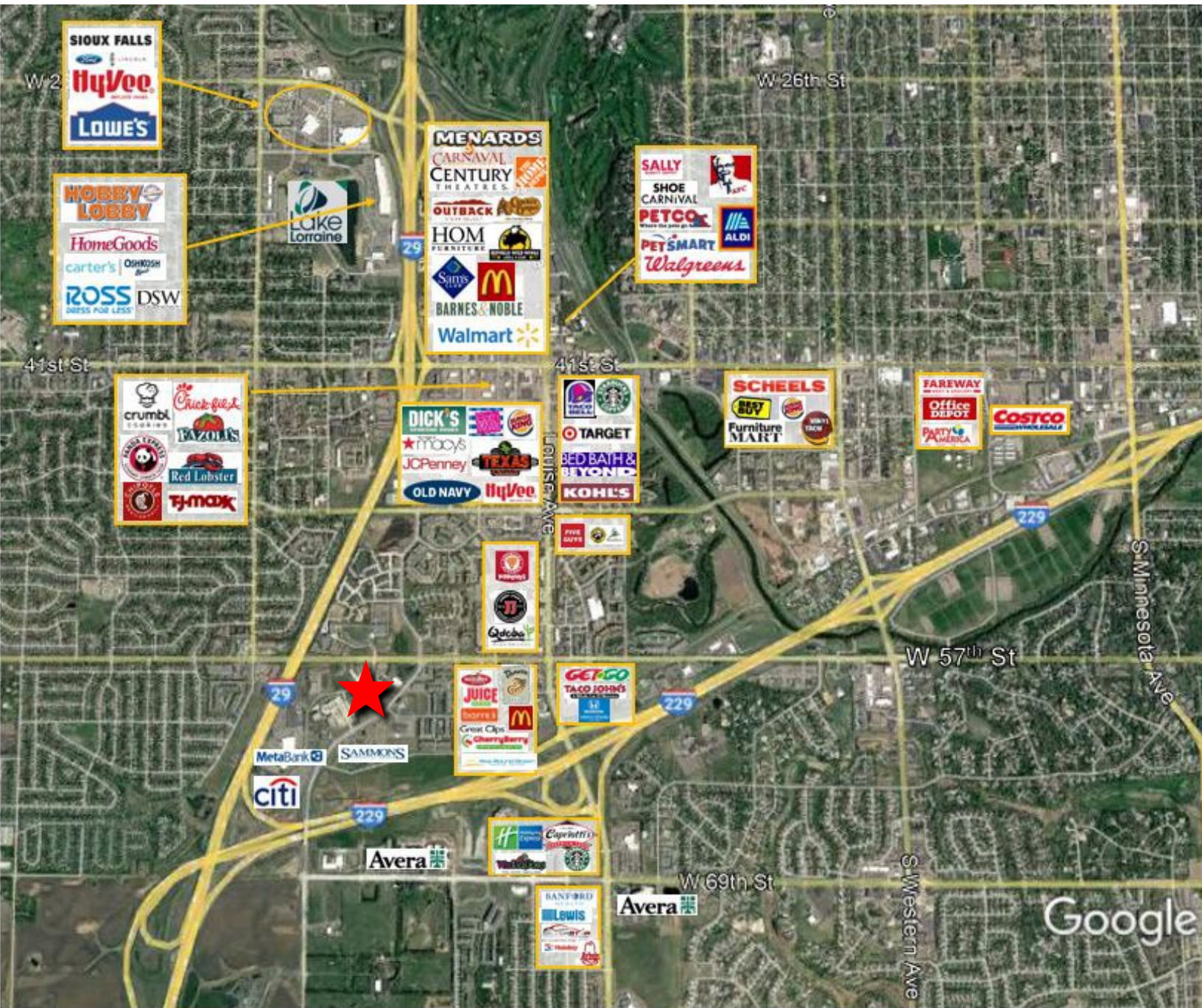


**Bender Commercial Real Estate Services**

305 West 57<sup>th</sup> Street  
Sioux Falls, SD 57108  
(605) 336-7600  
[www.benderco.com](http://www.benderco.com)

**Bender**  
COMMERCIAL





**Bender Commercial Real Estate Services**

305 West 57<sup>th</sup> Street  
Sioux Falls, SD 57108  
(605) 336-7600  
[www.benderco.com](http://www.benderco.com)

**Bender**  
COMMERCIAL