

WAREHOUSE / OFFICE OPPORTUNITY



FOR LEASE | FLEX / OFFICE SPACE | 2500 EAST 52ND STREET NORTH | SIOUX FALLS, SD

CORPORATE CENTER I FLEX / OFFICE SPACE

- **33,180 SF (Subdividable)**
- **For Lease: Contact broker for pricing**
- Large open office space located in Corporate Center I in northeast Sioux Falls.
- Space has large open work areas with perimeter private offices, conference room, training room and breakroom.
- Two (2) dock-high doors.
- Parking ratio of 1 space per 147 square feet.
- Monument signage available.
- Easy access to Benson Road and I-229.
- Space can be subdivided – contact broker for details.

ANDI ANDERSON, SIOR
andi@benderco.com
(605) 782-1660

Bender Commercial Real Estate Services

305 West 57th Street
Sioux Falls, SD 57108
(605) 336-7600
www.benderco.com

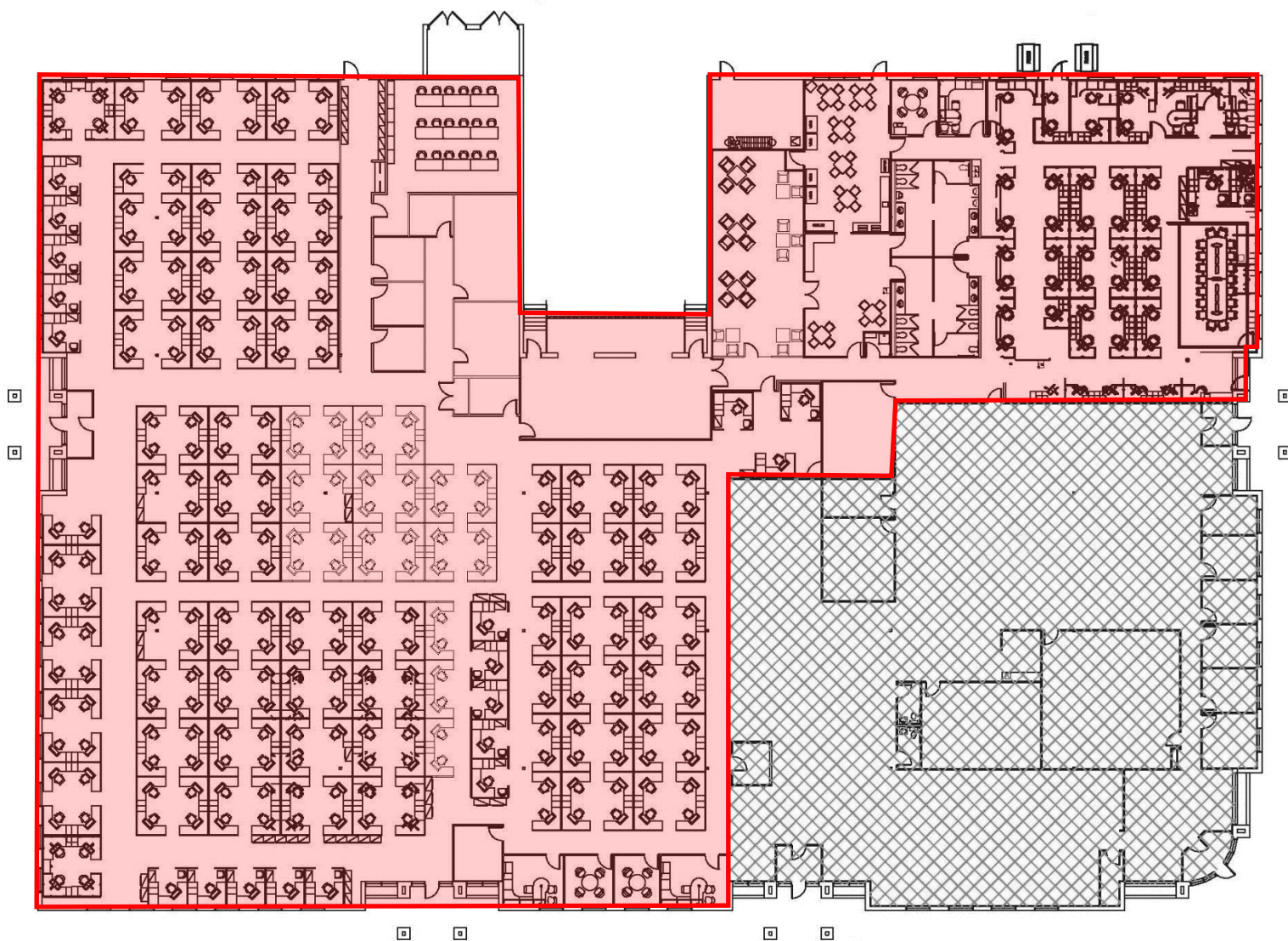
Bender
COMMERCIAL



Bender Commercial Real Estate Services

305 West 57th Street
Sioux Falls, SD 57108
(605) 336-7600
www.benderco.com

Bender
COMMERCIAL



2500 East 52nd Street North

Bender Commercial Real Estate Services

305 West 57th Street
Sioux Falls, SD 57108
(605) 336-7600
www.benderco.com

Bender
COMMERCIAL



Bender Commercial Real Estate Services

305 West 57th Street
Sioux Falls, SD 57108
(605) 336-7600
www.benderco.com

Bender
COMMERCIAL