

**FOR LEASE**



# CORPORATE CENTER I

FLEX/OFFICE SPACE

**Bender**  
COMMERCIAL



**2500 EAST 52ND STREET NORTH  
SIOUX FALLS, SD**



**33,180 SF  
SUBDIVIDABLE**



**CONTACT  
BROKER**

- Large open space located in Corporate Center I in northeast Sioux Falls.
- Space has large open works areas with perimeter private offices, conference room, training room and breakroom.
- Two (2) dock-high doors.
- Parking ratio of 1 space per 147 SF.
- Monument signage available.
- Easy access to Benson Road and I-229.
- Space can be subdivided – contact broker for details.

**ANDI ANDERSON, SIOR** | [andi@benderco.com](mailto:andi@benderco.com) | 605-782-1660



Bender Commercial Real Estate Services | 305 West 57th Street | Sioux Falls, SD 57108 | 605-336-7600 | [benderco.com](http://benderco.com)

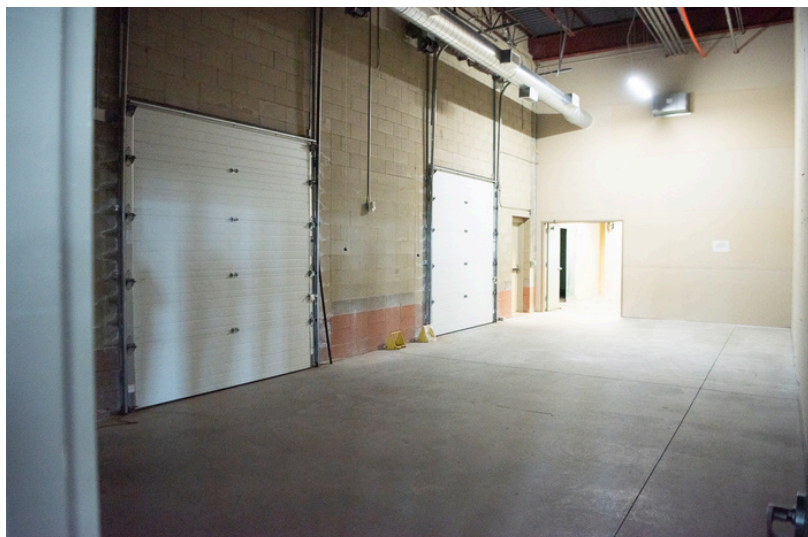
© 2024 Bender Companies. Information herein deemed reliable, but not guaranteed.



# CORPORATE CENTER I



FLEX/OFFICE SPACE FOR LEASE



Bender Commercial Real Estate Services | 305 West 57th Street | Sioux Falls, SD 57108 | 605-336-7600 | [benderco.com](http://benderco.com)

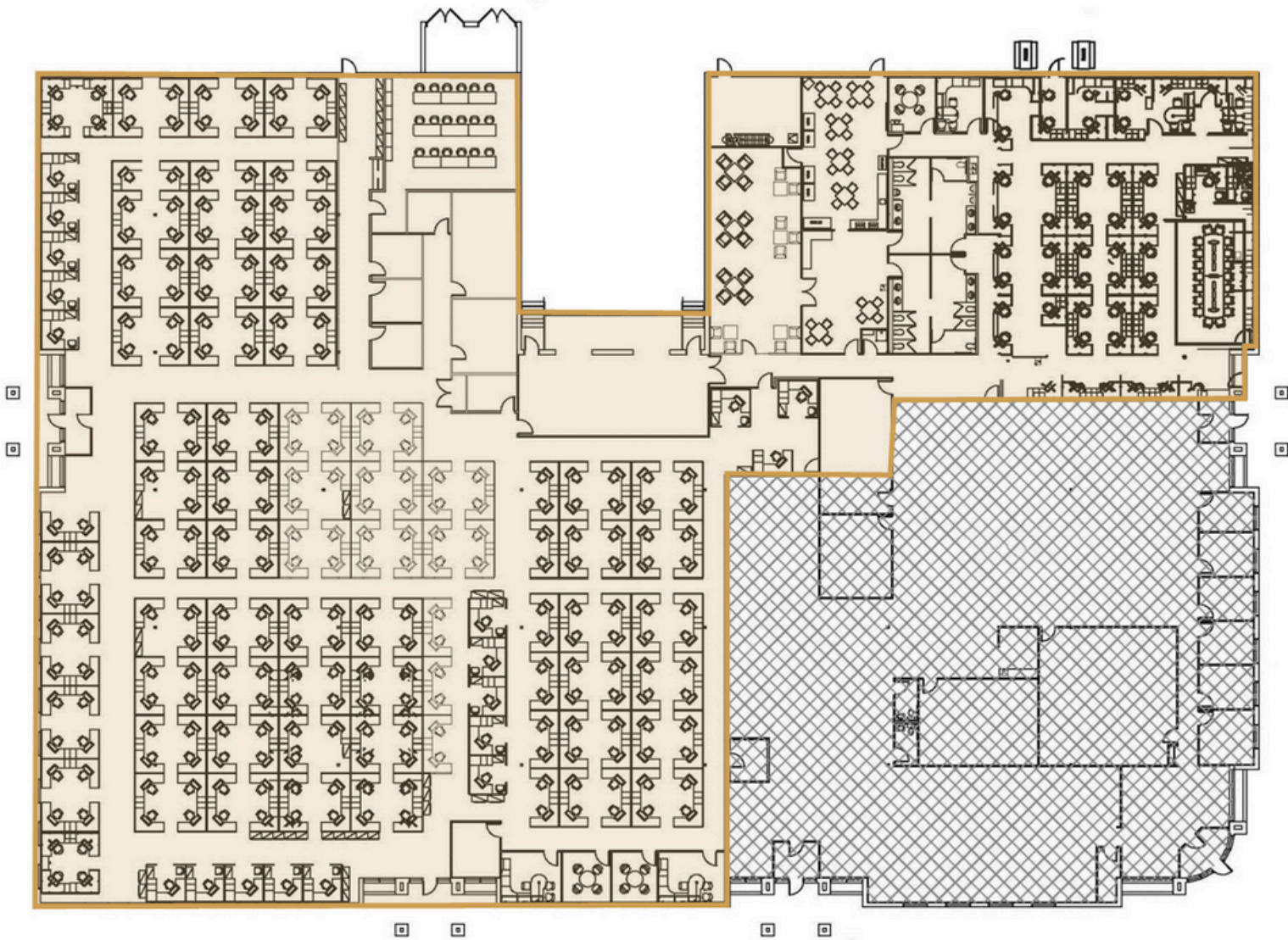
2024 Bender Companies. Information herein deemed reliable, but not guaranteed.



# CORPORATE CENTER I



FLEX/OFFICE SPACE FOR LEASE



**2500 East 52nd Street North**



# CORPORATE CENTER I



FLEX/OFFICE SPACE FOR LEASE

