

**CENTENNIAL STREET ABERDEEN LAND  
224 SOUTH CENTENNIAL STREET  
ABERDEEN, SD**

Real Estate Services

**Bender**  
COMMERCIAL

**FOR SALE  
COMMERCIAL LAND**

*We open doors.*



**PROPERTY FEATURES:**

- **5.22 acres**
- **\$675,000.00**
- Zoned C-2 Highway Business
- Located on the northwest corner of Centennial Street and 3<sup>rd</sup> Avenue SE.
- Directly across from Lakewood Mall, near Sanford Medical Center and Menards.

*For More Information, Please Contact:*

**DOUGLAS BROCKHOUSE, SIOR**  
dbrock@benderco.com  
(605) 782-1664

**ANDI ANDERSON, SIOR**  
andi@benderco.com  
(605) 782-1660



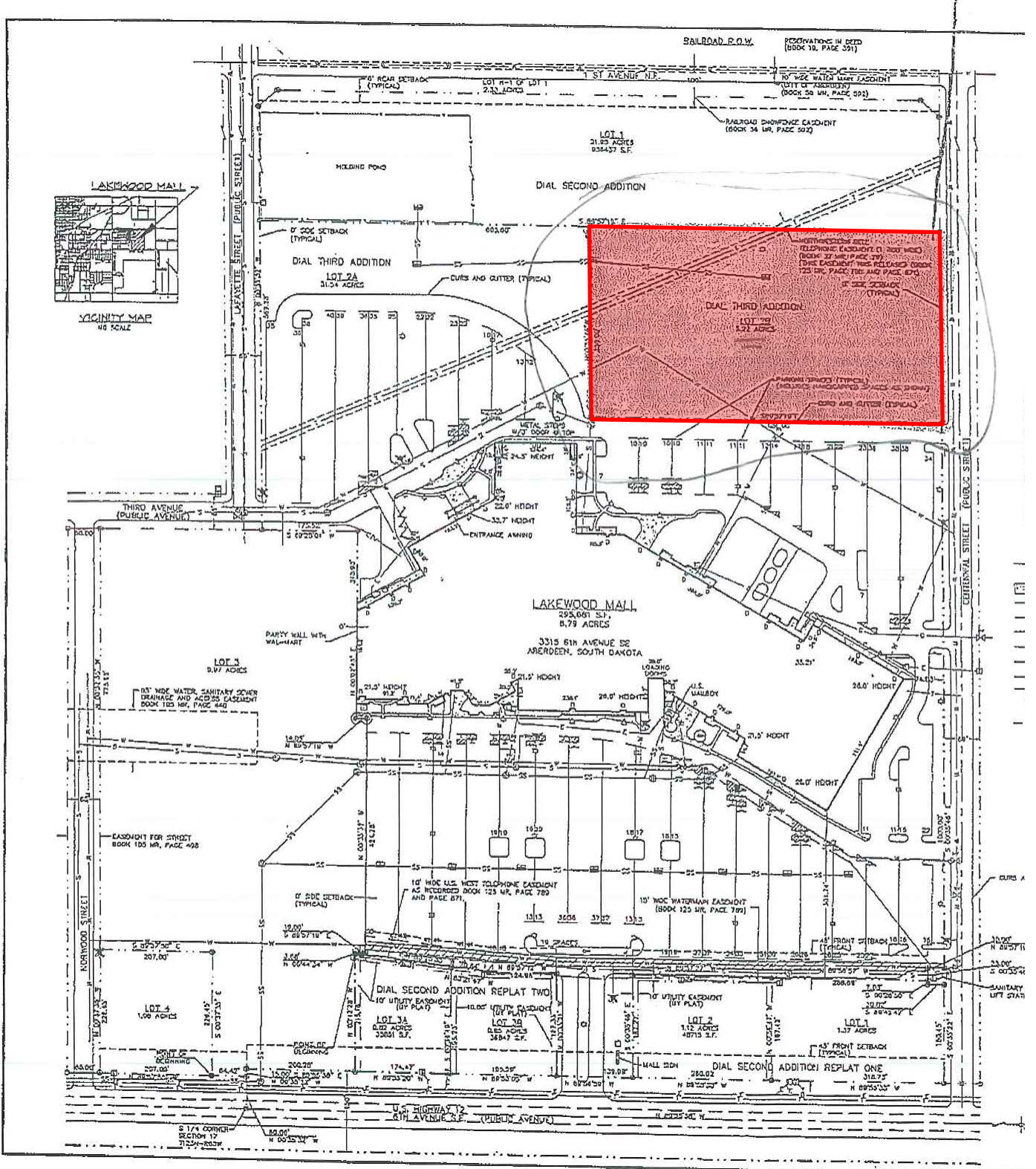
# CENTENNIAL STREET ABERDEEN LAND 224 SOUTH CENTENNIAL STREET ABERDEEN, SD

Real Estate Services

# Bender

COMMERCIAL

We open doors.



**CENTENNIAL STREET ABERDEEN LAND  
224 SOUTH CENTENNIAL STREET  
ABERDEEN, SD**

Real Estate Services

**Bender**  
COMMERCIAL

*We open doors.*



**CENTENNIAL STREET ABERDEEN LAND  
224 SOUTH CENTENNIAL STREET  
ABERDEEN, SD**

Real Estate Services

**Bender**  
COMMERCIAL

*We open doors.*

