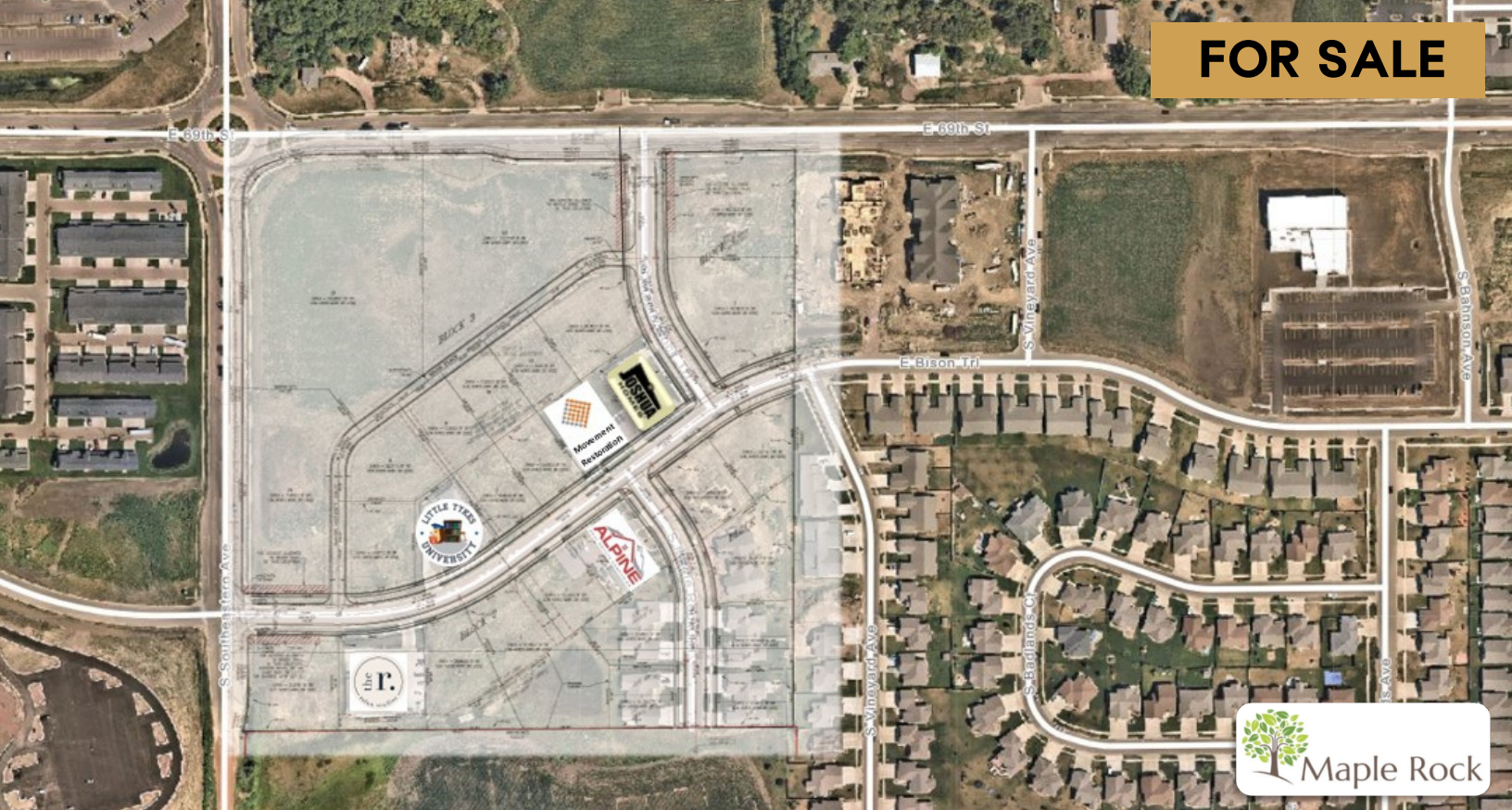


FOR SALE



MAPLE ROCK DEVELOPMENT

COMMERCIAL & OFFICE LAND

Bender
COMMERCIAL



6200 SOUTH SOUTHEASTERN AVENUE
SIOUX FALLS, SD



0.34 TO 3.5 ACRES



\$8.00 - \$13.00/SF

- Commercial and office land located on the southeast corner of 69th Street and Southeastern Avenue.
- Various Lot sizes available.
- 8.24 AC of C-2 Commercial land ranging from 0.34 - 3.5 acres
- 3.62 AC of Office land ranging from 0.34 - 1.09 acres
- Access into development via 69th Street and Southeastern Avenue.
- Easy access to proposed SD 100 (South Veterans Parkway).
- Perfect for small owner-occupied office users. Choose your own builder or build-to-suit options available..
- Covenants and restrictions apply - contact broker for details.

ALEX SOUNDY

alex@benderco.com

605-681-8351

REGGIE KUIPERS, SIOR

reggie@benderco.com

605-782-1663



Bender Commercial Real Estate Services | 305 West 57th Street | Sioux Falls, SD 57108 | 605-336-7600 | benderco.com

© 2023 Bender Companies. Information herein deemed reliable, but not guaranteed.

MAPLE ROCK DEVELOPMENT



COMMERCIAL & OFFICE LAND



MAPLE ROCK DEVELOPMENT



COMMERCIAL & OFFICE/LW LAND

