

FOR LEASE



MARKET PLACE

RETAIL SPACE

Bender
COMMERCIAL



15 1ST STREET NW
WATERTOWN, SD



1,900 SF



\$17.50/SF NNN

- Newly reclaimed mixed use property in downtown Watertown.
- Main level retail space with large patio.
- Onsite parking. Building signage available.
- Vibrant downtown location near restaurants, shopping and entertainment.
- Negotiable tenant improvement allowance.
- Contact broker for additional details.
- Co-listed with Crestone Commercial Real Estate.

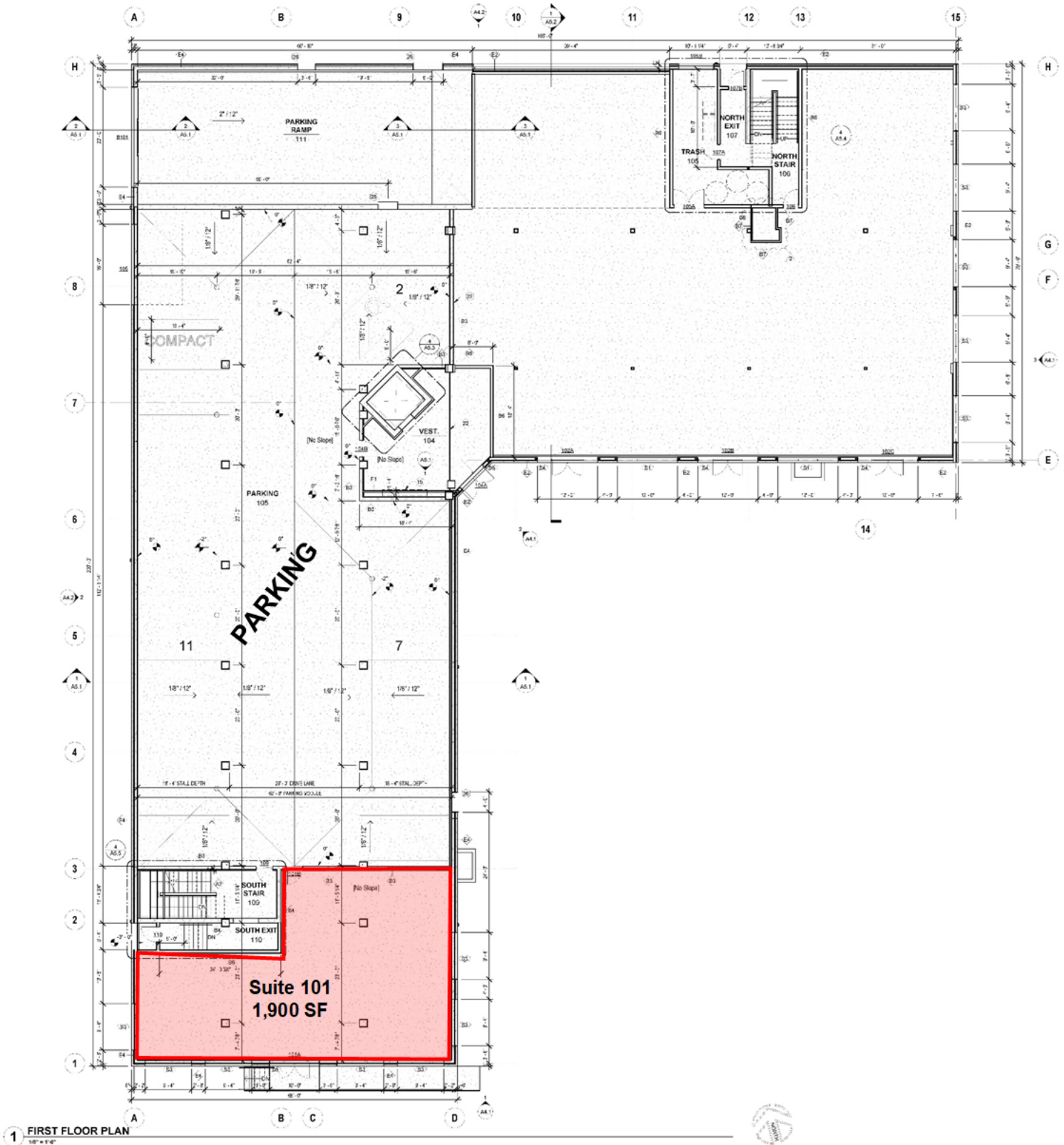
ALEX SOUNDY | alex@benderco.com | 605-376-3700



Bender Commercial Real Estate Services | 305 West 57th Street | Sioux Falls, SD 57108 | 605-336-7600 | benderco.com

© 2023 Bender Companies. Information herein deemed reliable, but not guaranteed.

RETAIL SPACE FOR LEASE



MARKET PLACE



RETAIL SPACE FOR LEASE



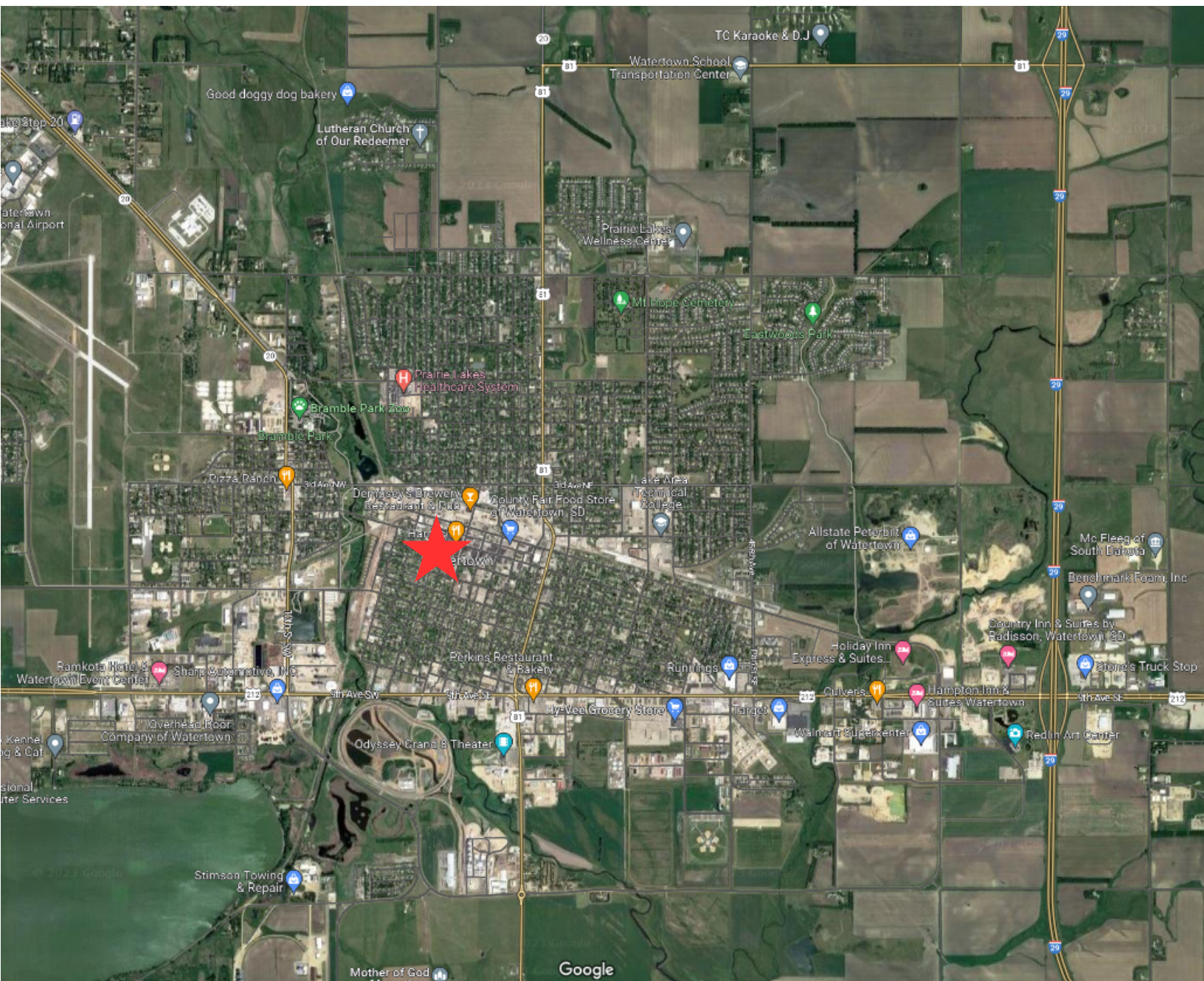
Bender Commercial Real Estate Services | 305 West 57th Street | Sioux Falls, SD 57108 | 605-336-7600 | benderco.com

2023 Bender Companies. Information herein deemed reliable, but not guaranteed.

MARKET PLACE



RETAIL SPACE FOR LEASE



RETAIL SPACE FOR LEASE

DEMOGRAPHIC SUMMARY

Watertown City, SD

Geography: Place

KEY FACTS

22,845

Population



10,016

Households

38.7

Median Age

\$51,213

Median Disposable Income

EDUCATION

7%

No High School Diploma



35%

High School Graduate



33%

Some College



25%

Bachelor's/Grad/Prof Degree

INCOME



\$58,550

Median Household Income



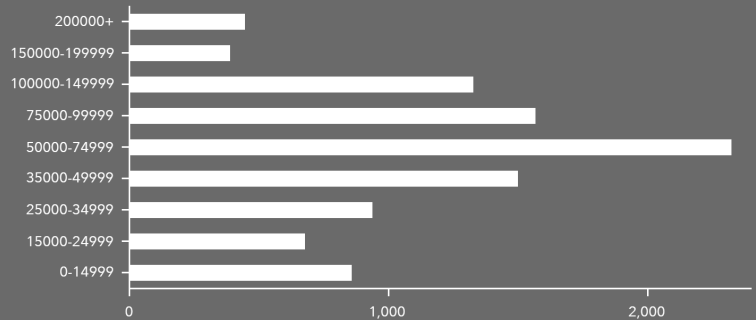
\$35,080

Per Capita Income



\$117,573

Median Net Worth



HOUSEHOLD INCOME

EMPLOYMENT



White Collar

60%



Blue Collar

27%



Services

15%

1.4%

Unemployment Rate

Source: Esri. The vintage of the data is 2022, 2027.