



FOR SUBLEASE | FLEX SPACE | 1307 26TH STREET SE | WATERTOWN, SD

WATERTOWN FLEX SPACE

- **8,400 SF**
- **For Sublease: \$6.00/SF NNN**
- Flex space located near Highway 212 – Watertown’s main thoroughfare.
- Flex space has four 14’ overhead doors.
- Office space with one private office, conference room and break room.
- Graveled outdoor lot.
- Quick access to Highway 212 and I-29.
- Nearby businesses include Walmart, Spartronics, Freedom Enterprises, Culver’s, Jimmy John’s, Qdoba and Starbucks.
- Contact broker about shelving.
- Sublease through April 30, 2026.

BRADYN NEISES, SIOR
bradyn@benderco.com
(605) 782-1682

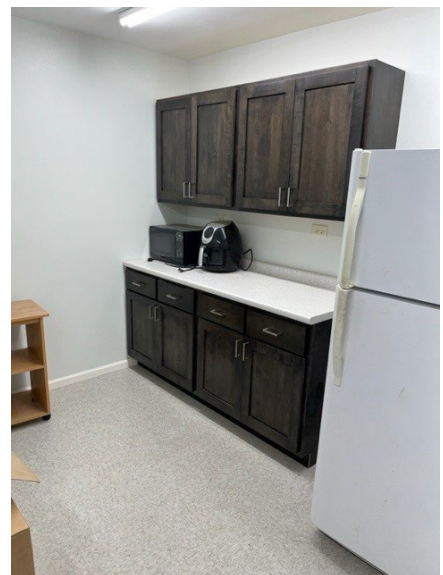
DOUG BROCKHOUSE
dbrock@benderco.com
(605) 728-5800

Bender Commercial Real Estate Services

305 West 57th Street
Sioux Falls, SD 57108
(605) 336-7600
www.benderco.com

Bender
COMMERCIAL

WATERTOWN FLEX SPACE | FOR SUBLEASE | 1307 26TH STREET SE | WATERTOWN, SD



Bender Commercial Real Estate Services
305 West 57th Street
Sioux Falls, SD 57108
(605) 336-7600
www.benderco.com

Bender
COMMERCIAL



Bender Commercial Real Estate Services

305 West 57th Street
Sioux Falls, SD 57108
(605) 336-7600
www.benderco.com



WATERTOWN FLEX SPACE | FOR SUBLEASE | 1307 26TH STREET SE | WATERTOWN, SD



Bender Commercial Real Estate Services

305 West 57th Street
Sioux Falls, SD 57108
(605) 336-7600
www.benderco.com

Bender
COMMERCIAL