

FOR SALE | DEVELOPMENT LAND | HIGHWAY 106 | TEA, SD

MUELLER LAND

- 50 acres +/-
- For Sale: \$72,500/acre
- Development land near Highway 106 near the I-29 Tea Exit.
- City of Tea future use includes business park.
- Highway 106 reconstructed 2021/2022 to four (4) lanes.
- Located near Marv Skie Lincoln County Airport.
- Contact broker for additional details on sewer and access.

BRADYN NEISES, SIOR
bradyn@benderco.com
(605) 782-1682

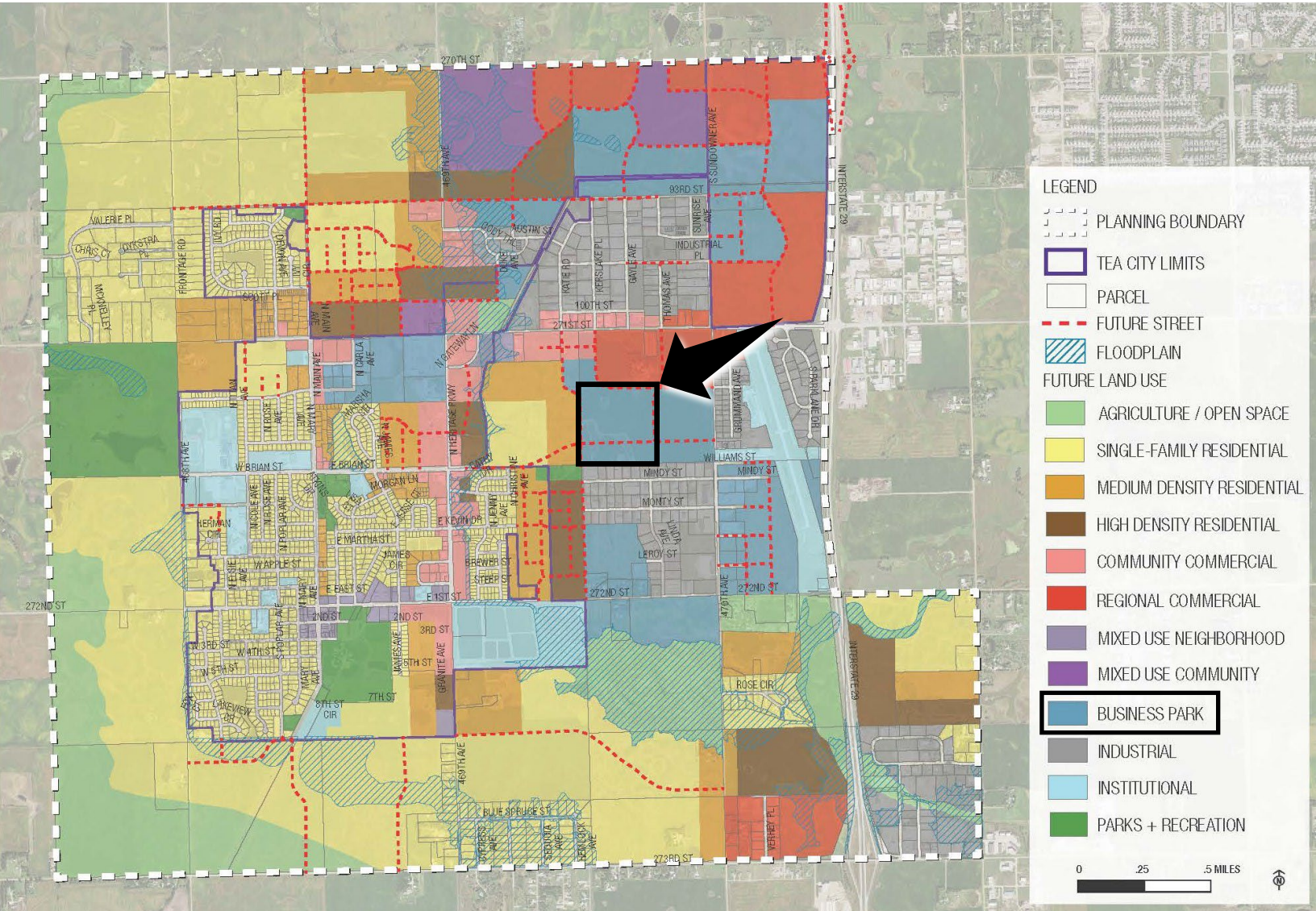
DOUG BROCKHOUSE
dbrock@benderco.com
(605) 728-5800

Bender Commercial Real Estate Services

305 West 57th Street
Sioux Falls, SD 57108
(605) 336-7600
www.benderco.com

Bender
COMMERCIAL

MUELLER LAND | FOR SALE | HIGHWAY 106 & 470TH AVENUE | TEA, SD



Bender Commercial Real Estate Services
 305 West 57th Street
 Sioux Falls, SD 57108
 (605) 336-7600
 www.benderco.com

Bender
 COMMERCIAL

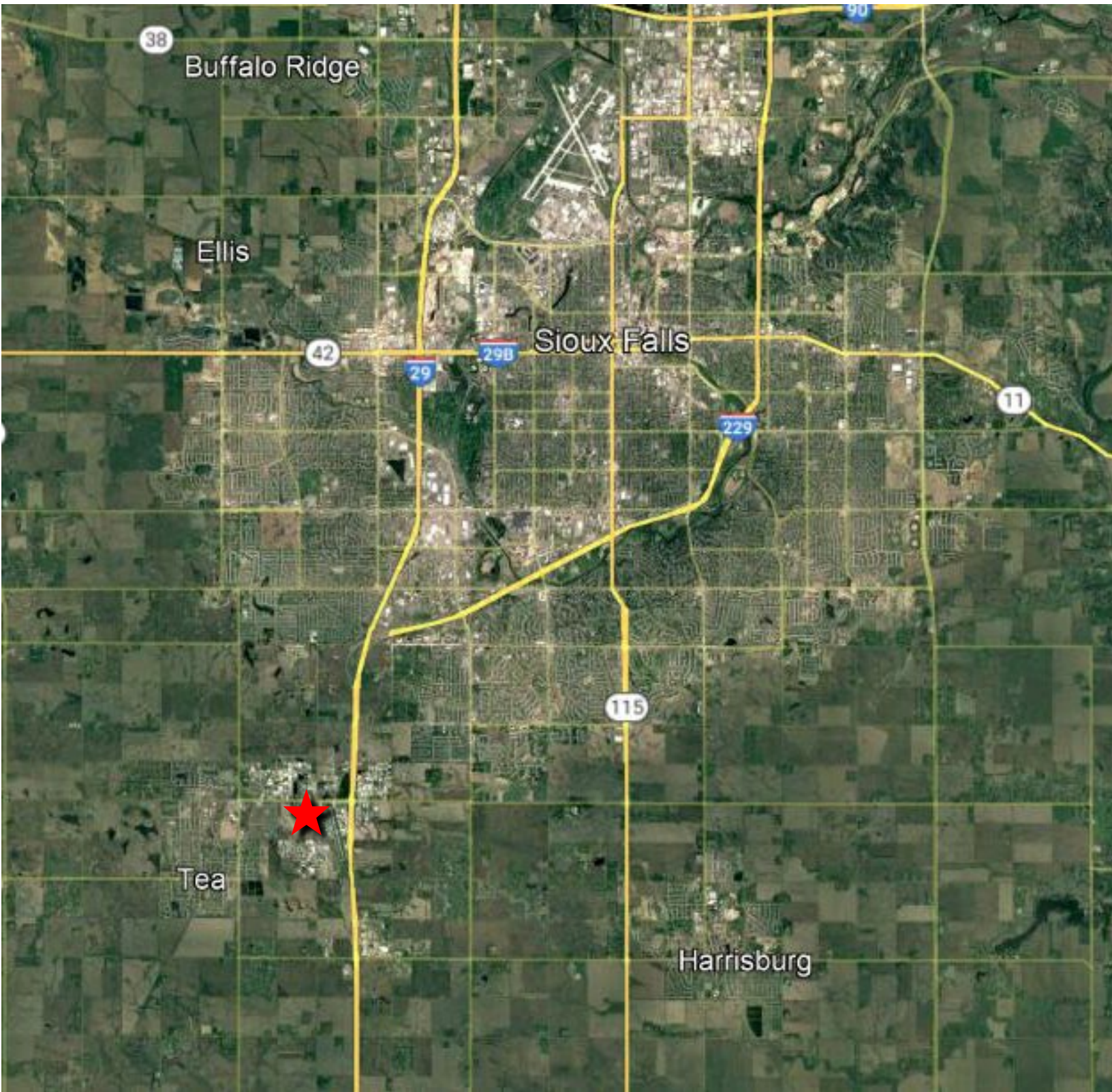
MUELLER LAND | FOR SALE | HIGHWAY 106 & 470TH AVENUE | TEA, SD



Bender Commercial Real Estate Services
305 West 57th Street
Sioux Falls, SD 57108
(605) 336-7600
www.benderco.com

Bender
COMMERCIAL

© 2022 Bender Companies. Per Owner and/or County Assessor's Office. Buyer/Lessee should verify independently. Information herein deemed reliable, but not guaranteed.



Bender Commercial Real Estate Services

305 West 57th Street
Sioux Falls, SD 57108
(605) 336-7600
www.benderco.com

Bender
COMMERCIAL