

FOR SALE | DEVELOPMENT LAND | HIGHWAY 106 & 470TH AVENUE | TEA, SD

MUELLER LAND

- **65 acres**
- **For Sale: \$72,500/acre**
- Development land on the corner of Highway 106 and 470th Avenue in Tea, SD.
- Located within Tea's city limits.
- Less than ½ mile from I-29.
- City of Tea future use includes regional commercial and business park.
- Highway 106 reconstructed 2021/2022 to four (4) lanes.
- Great visibility with daily traffic count over 11,600 vehicles along Highway 106.
- Located near Marv Skie Lincoln County Airport.
- Contact broker for additional details on sewer capabilities.

BRADYN NEISES
bradyn@benderco.com
(605) 782-1682

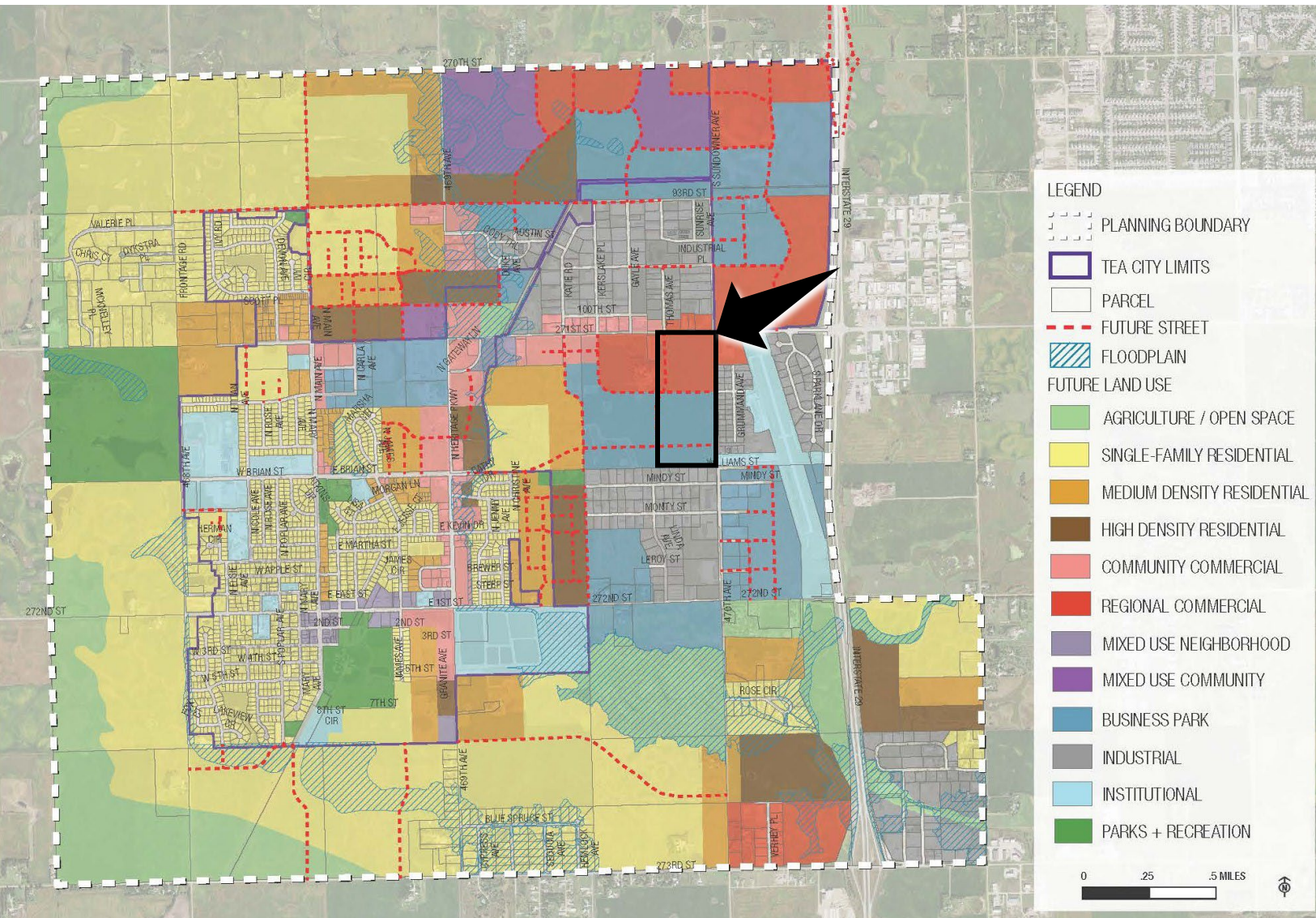
DOUG BROCKHOUSE
dbrock@benderco.com
(605) 728-5800

Bender Commercial Real Estate Services

305 West 57th Street
Sioux Falls, SD 57108
(605) 336-7600
www.benderco.com

Bender
COMMERCIAL

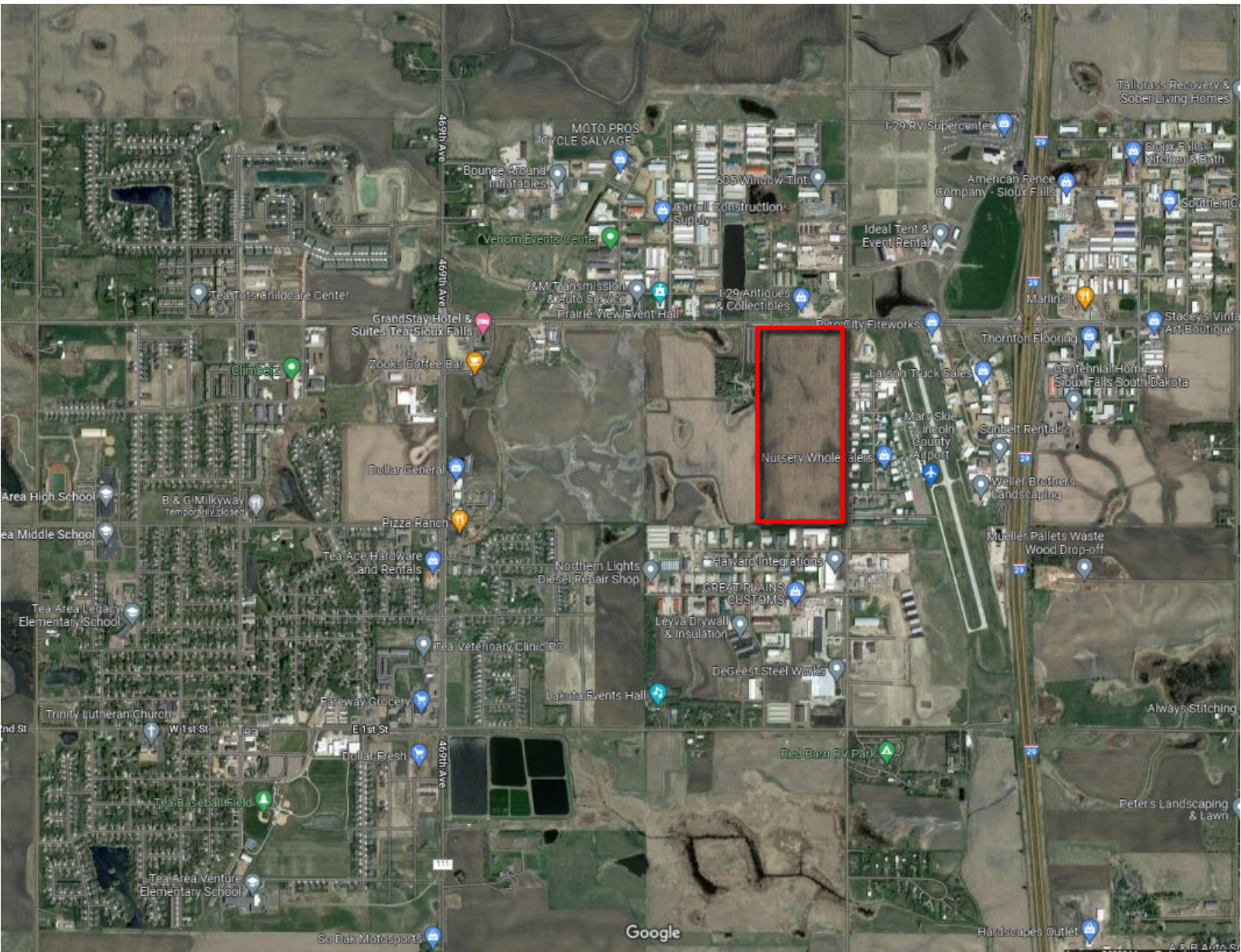
MUELLER LAND | FOR SALE | HIGHWAY 106 & 470TH AVENUE | TEA, SD



Bender Commercial Real Estate Services
 305 West 57th Street
 Sioux Falls, SD 57108
 (605) 336-7600
 www.benderco.com

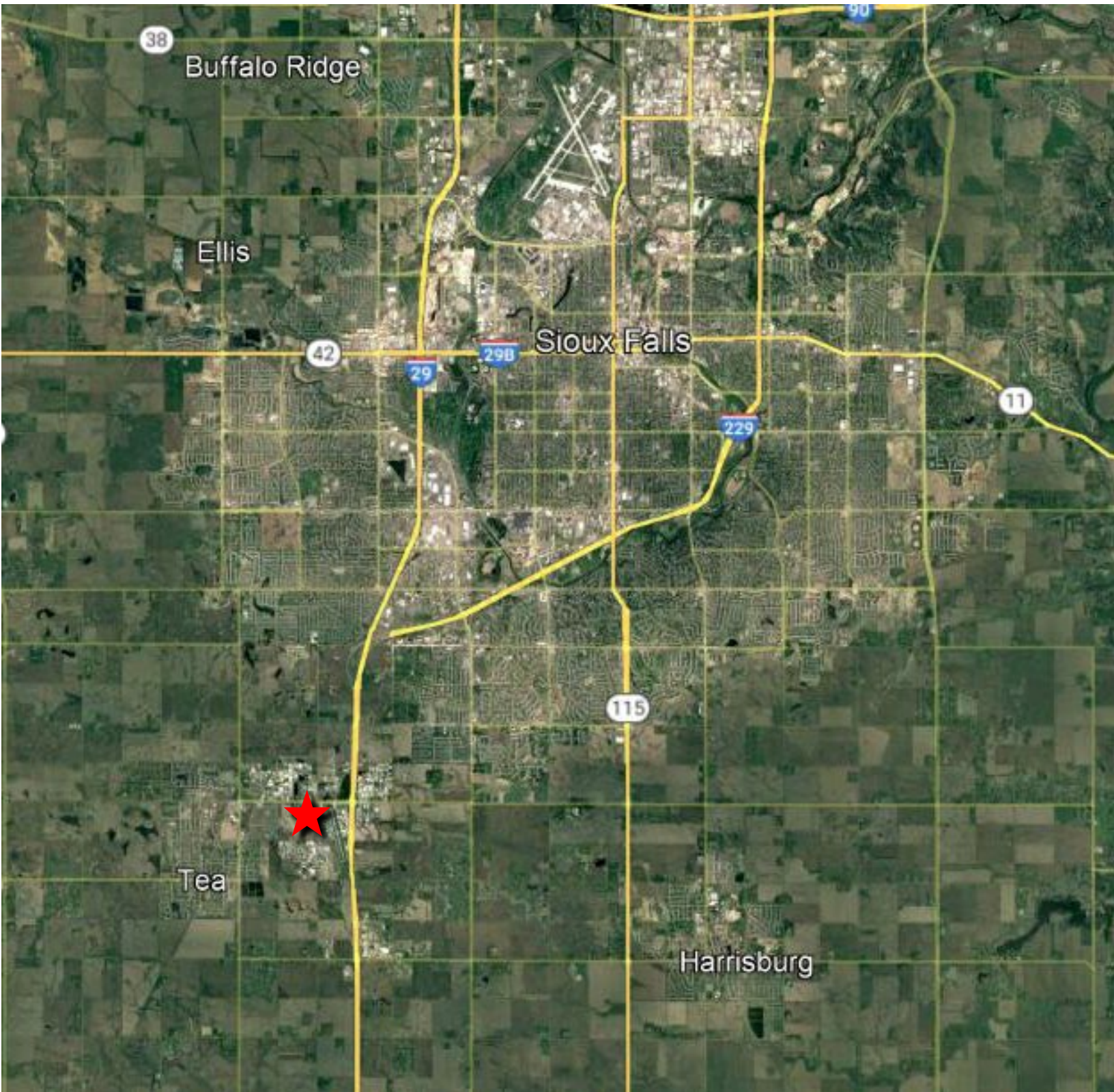
Bender
 COMMERCIAL

MUELLER LAND | FOR SALE | HIGHWAY 106 & 470TH AVENUE | TEA, SD



Bender Commercial Real Estate Services
305 West 57th Street
Sioux Falls, SD 57108
(605) 336-7600
www.benderco.com

Bender
COMMERCIAL



Bender Commercial Real Estate Services

305 West 57th Street
Sioux Falls, SD 57108
(605) 336-7600
www.benderco.com

Bender
COMMERCIAL