



FOR LEASE | OFFICE SPACE | 1741 SOUTH CLEVELAND AVENUE, SUITE 301 | SIOUX FALLS, SD

LEVO BUILDING SUITE 301

- **2,597 RSF (2,058 USF)**
- **For Lease: \$15.50/SF NNN**
Estimated NNNs: \$5.90/SF
- Upper level office space in premier office building in east Sioux Falls.
- Space has reception area, eight (8) private offices, storage room and open work area.
- Common area restrooms.
- Ample on-site parking.
- East access to I-229.
- Great visibility along main eastside thoroughfare with a daily traffic count of 24,400 vehicles along East 26th Street.

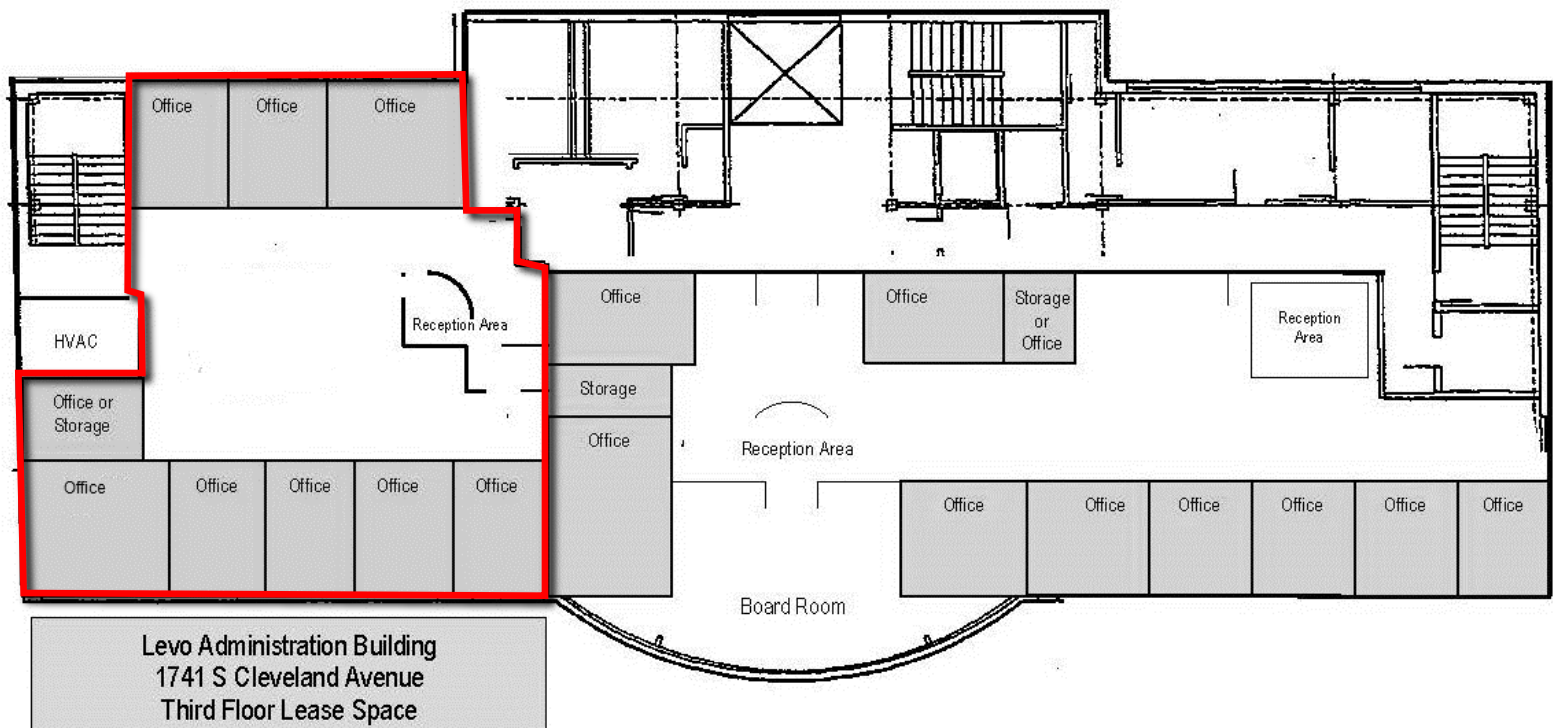
ALEX SOUNDY
alex@benderco.com
(605) 376-3700

MICHAEL BENDER, CCIM, SIOR
michael@benderco.com
(605) 782-1660

Bender Commercial Real Estate Services

305 West 57th Street
Sioux Falls, SD 57108
(605) 336-7600
www.benderco.com

Bender
COMMERCIAL



Bender Commercial Real Estate Services

305 West 57th Street
Sioux Falls, SD 57108
(605) 336-7600
www.benderco.com

Bender
COMMERCIAL



Bender Commercial Real Estate Services

305 West 57th Street
Sioux Falls, SD 57108
(605) 336-7600
www.benderco.com

© 2022 Bender Companies. Per Owner and/or County Assessor's Office. Buyer/Lessee should verify independently. Information herein deemed reliable, but not guaranteed.

Bender
COMMERCIAL

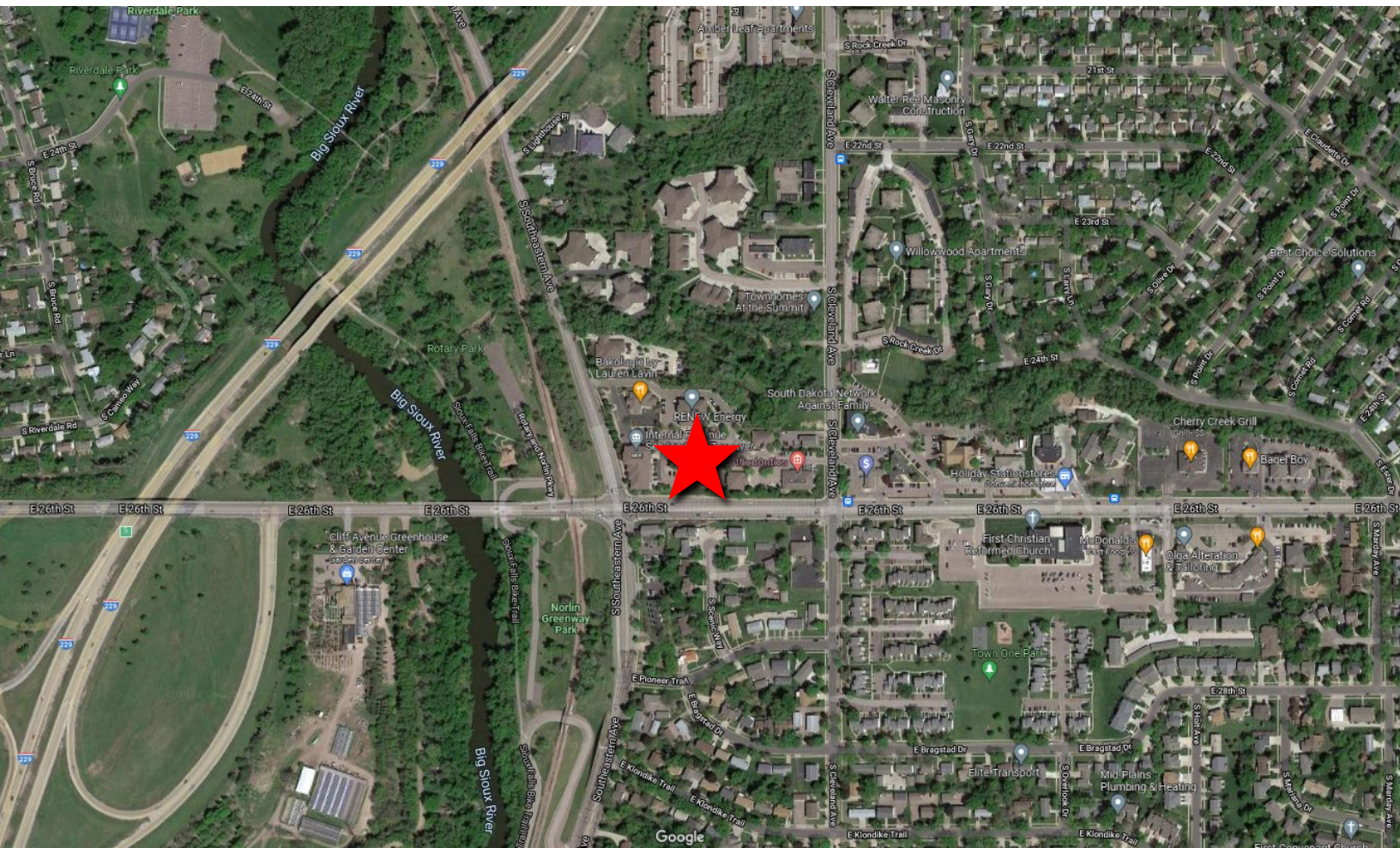


Bender Commercial Real Estate Services

305 West 57th Street
Sioux Falls, SD 57108
(605) 336-7600
www.benderco.com

Bender
COMMERCIAL

LEVO BUILDING | FOR LEASE | 1741 SOUTH CLEVELAND AVENUE | SIOUX FALLS, SD



Bender Commercial Real Estate Services

305 West 57th Street
Sioux Falls, SD 57108
(605) 336-7600
www.benderco.com

Bender
COMMERCIAL

© 2022 Bender Companies. Per Owner and/or County Assessor's Office. Buyer/Lessee should verify independently. Information herein deemed reliable, but not guaranteed.