

FOR SALE | DEVELOPMENT LAND | 272ND STREET & 473RD AVENUE | HARRISBURG, SD

HENSCH LAND

- **118 ACRES**
- **\$50,000/ACRE**
- Development land near 272nd Street and 473rd Avenue (Western Avenue).
- 80 acres located within Harrisburg city limits
- Rare, bulk land development south of Sioux Falls.
- Conveniently located less than one mile south of Sioux Falls.
- Mixed use development.
- Access to Lincoln County Rural Water and new Harrisburg sewer line.
- Some access from 473rd Avenue and 272nd Street.
- Parcels can be purchased together or separately.

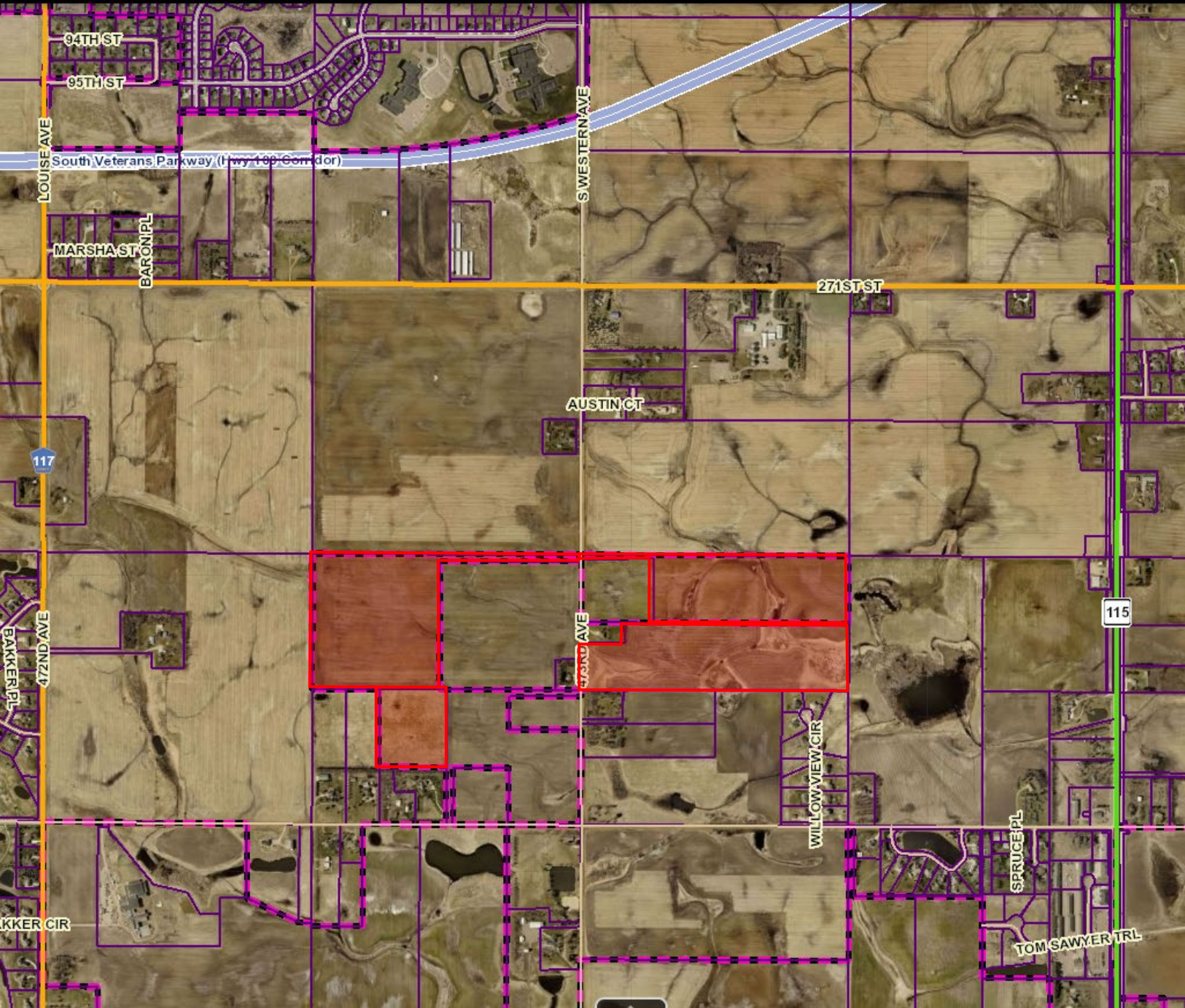
ROB KURTENBACH
rk@benderco.com
(605) 782-1674

REGGIE KUIPERS, SIOR
reggie@benderco.com
(605) 782-1663

Bender Commercial Real Estate Services

305 West 57th Street
Sioux Falls, SD 57108
(605) 336-7600
www.benderco.com

Bender
COMMERCIAL

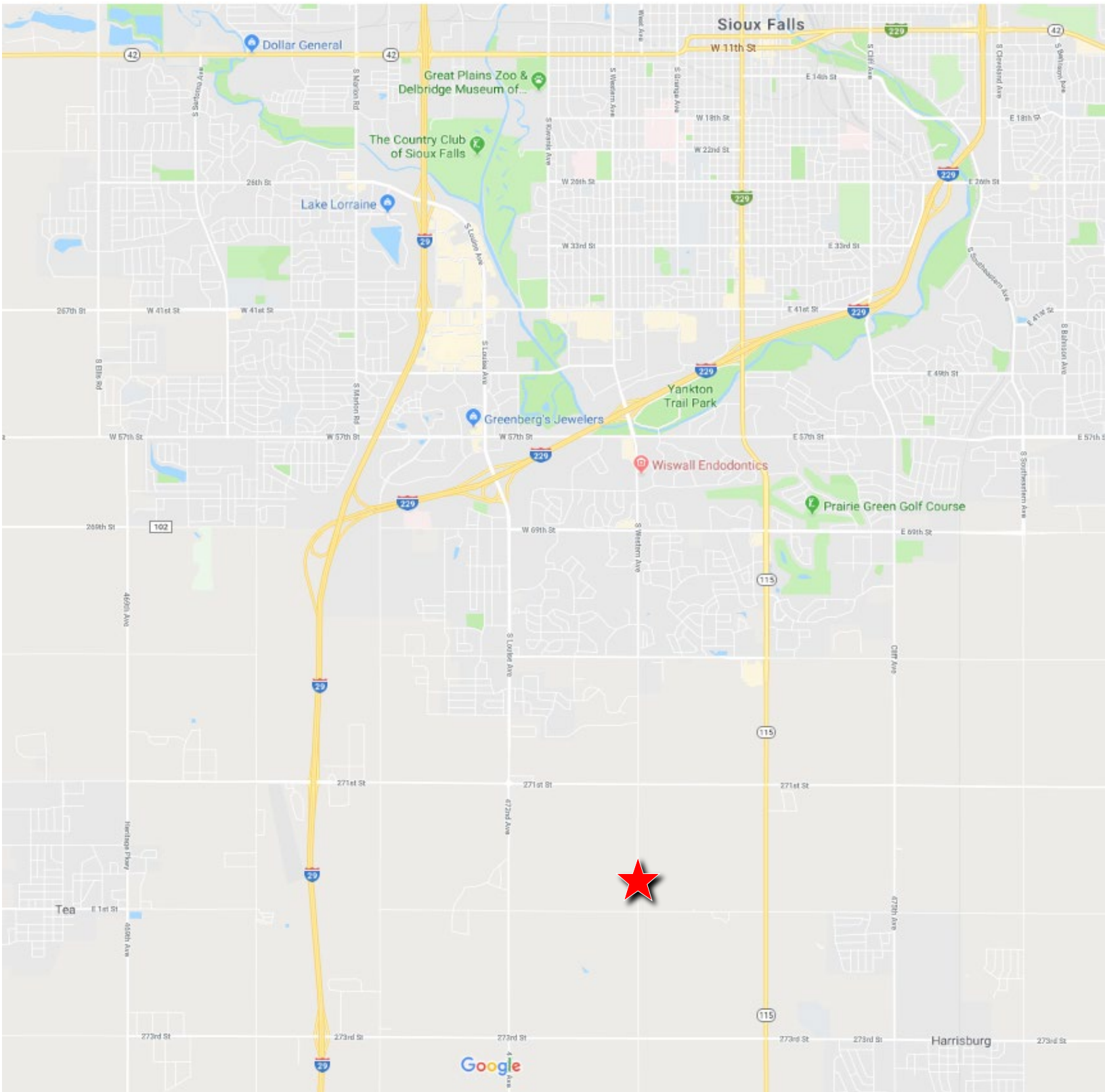


Bender Commercial Real Estate Services

305 West 57th Street
Sioux Falls, SD 57108
(605) 336-7600
www.benderco.com



HENSCH LAND | FOR SALE | 272ND STREET & 473RD AVENUE | HARRISBURG, SD



Bender Commercial Real Estate Services

305 West 57th Street
Sioux Falls, SD 57108
(605) 336-7600
www.benderco.com

