

SIOUX EMPIRE DEVELOPMENT PARK PARK VIII - EAST

Sioux Falls, South Dakota



PROPERTY FEATURES

- Protective covenants in place
- Zoned I-1 for light industrial
- All utilities to site
- On-site detention (BMP) required
- Range of 3-12 acre sites available
- All lots build-ready
- Subdividable or combined

PRICING

- Starting at \$3.00 psf

LOCATION

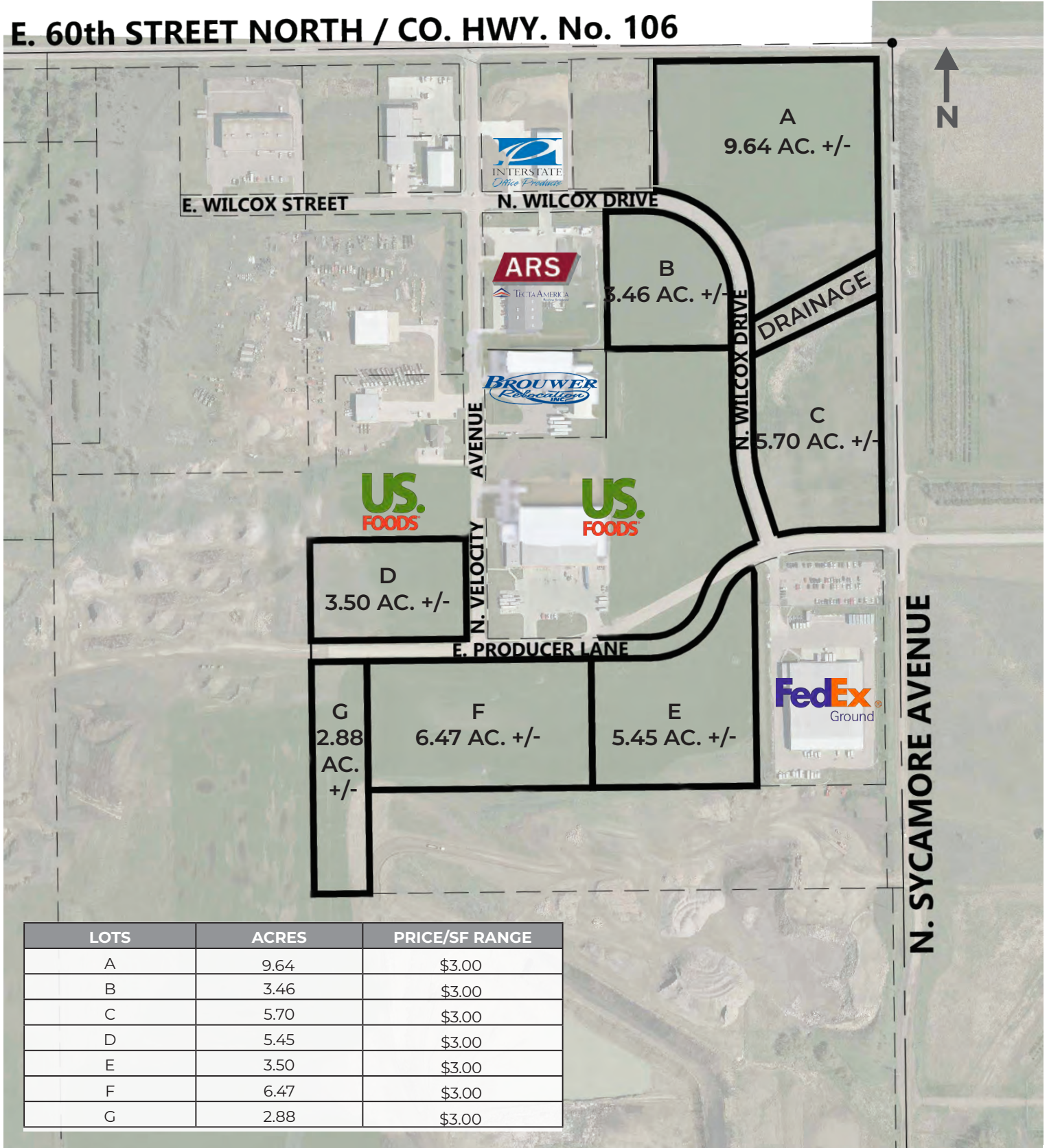
- Minutes from Sioux Falls Regional Airport (FSD)
- Located near the intersection of I-229 & I-90
- 60th Street North frontage available

FOR MORE INFORMATION CALL 605-223-1066

SIOUX EMPIRE DEVELOPMENT PARK PARK VIII - EAST

Sioux Falls, South Dakota

E. 60th STREET NORTH / CO. HWY. No. 106



LOTS	ACRES	PRICE/SF RANGE
A	9.64	\$3.00
B	3.46	\$3.00
C	5.70	\$3.00
D	5.45	\$3.00
E	3.50	\$3.00
F	6.47	\$3.00
G	2.88	\$3.00

SIoux EMPIRE DEVELOPMENT PARK PARK VIII - EAST

Sioux Falls, South Dakota



605.339.0103

siouxfallsdevelopment.com

DEAN DZIEDZIC
Vice President of Economic Development
deand@siouxfalls.com

BOB MUNDT
President/CEO of Economic Development
bobm@siouxfalls.com



605.336.7600

benderco.com

ROB FAGNAN, SIOR
Principal – Industrial & Land Markets
rob@benderco.com

MICHAEL BENDER, CCIM, SIOR
Principal – Office & Land Markets
michael@benderco.com



605.357.7100

siouxfallscommercial.com

GREGG BROWN, MBA, SIOR
Senior Vice President/Managing Director
gbrown@naisiouxfalls.com

DENNIS BRESKE, CCIM, SIOR, MBA
Senior Vice President
dbreske@naisiouxfalls.com